

73

77

Walter P. Chrysler and Della V. Chrysler
TO THE
City of Pasadena

PLAT

- Showing -

PORTIONS OF W. COLUMBIA ST. FORMERLY
HILL ST., IN THE CITY OF PASADENA, CALIF.

- TO BE VACATED -

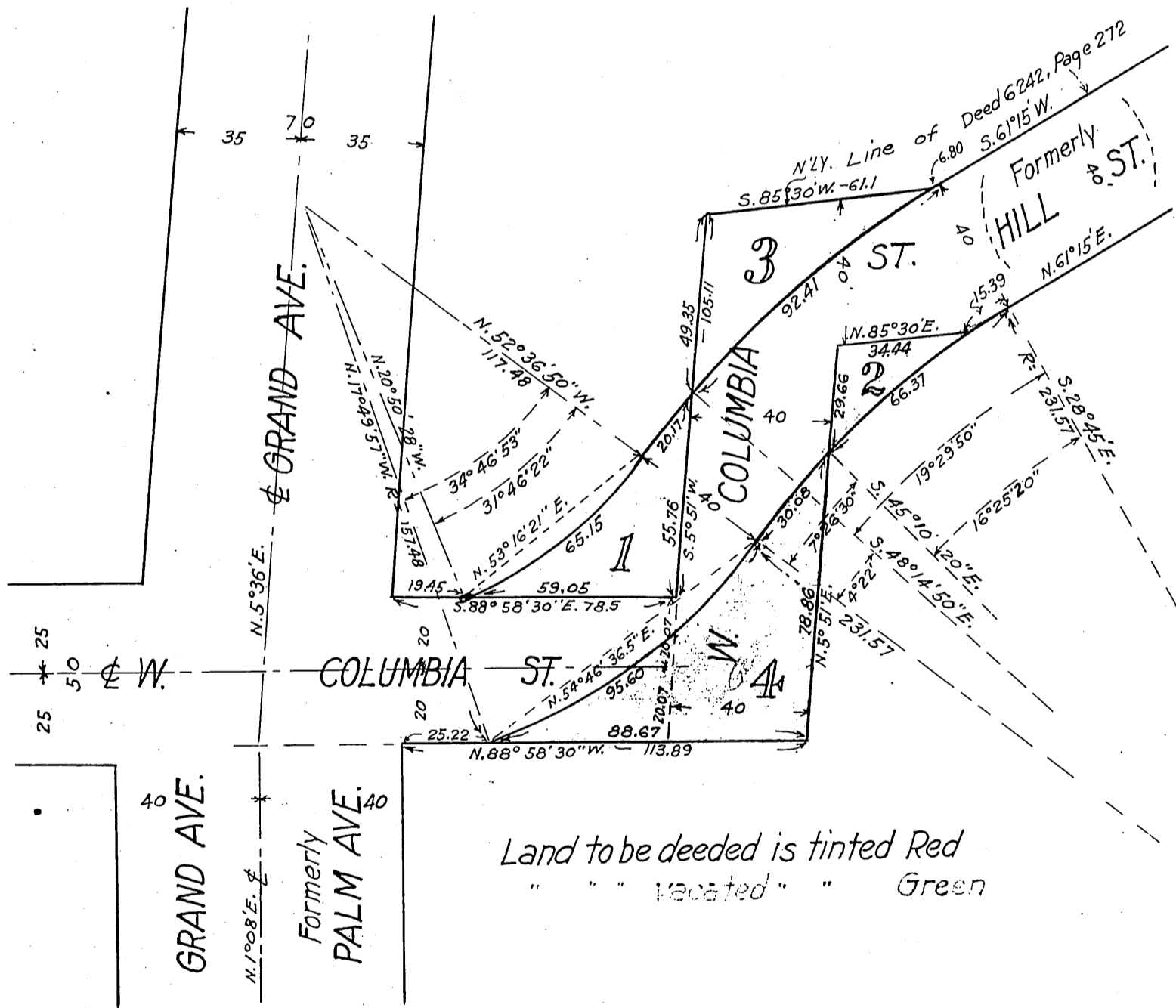
- ALSO -

SHOWING PORTIONS OF DIV. "E" SAN
GABRIEL ORANGE GROVE ASS'N'S. LANDS
AS PER MAP RECORDED IN BOOK 2, PAGES
556 TO 559 INC. MISCELLANEOUS RECORDS OF LOS
ANGELES COUNTY, STATE OF CALIFORNIA,
TO BE DEEDED FOR STREET PURPOSES.

Pasadena, Calif
June - 1920

Edwin P. Dewey,
City Engineer.

Scale = 1" = 40'



Land to be deeded is tinted Red
" " " vacated " " Green

COMP. E.G.P.
H.A.
E-175

D:30-283 - D.R. 788-373
D:30-283 - O.R. 939-67
For Vac. see D:33-77 Ord. 1920
D:33-132 O.R. 1398-100