

83

Frederick Conrad and Charlotte Conrad  
TO  
George Lounsberry and W.J. Harris

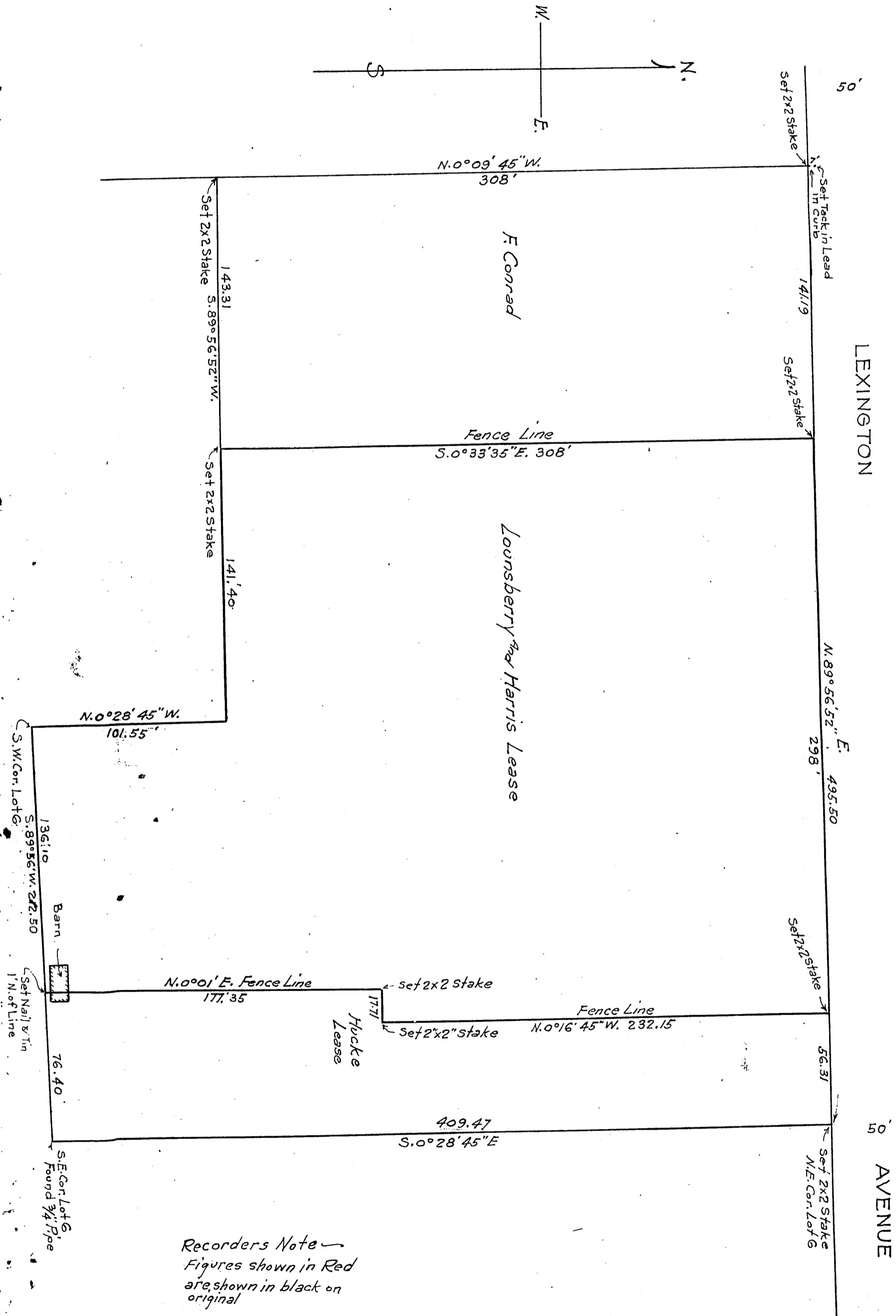
19

Survey of  
Lots 6 to 11, inclusive and Part of Lot 5  
of Tract. No. 1362  
Scale 1"=50'  
Lounsberry & Harris  
Jan. 1922

JUNE STREET

COMP. E.G.P.  
H.A.

O.R. 856



Rec. Feb. 6, 1922