

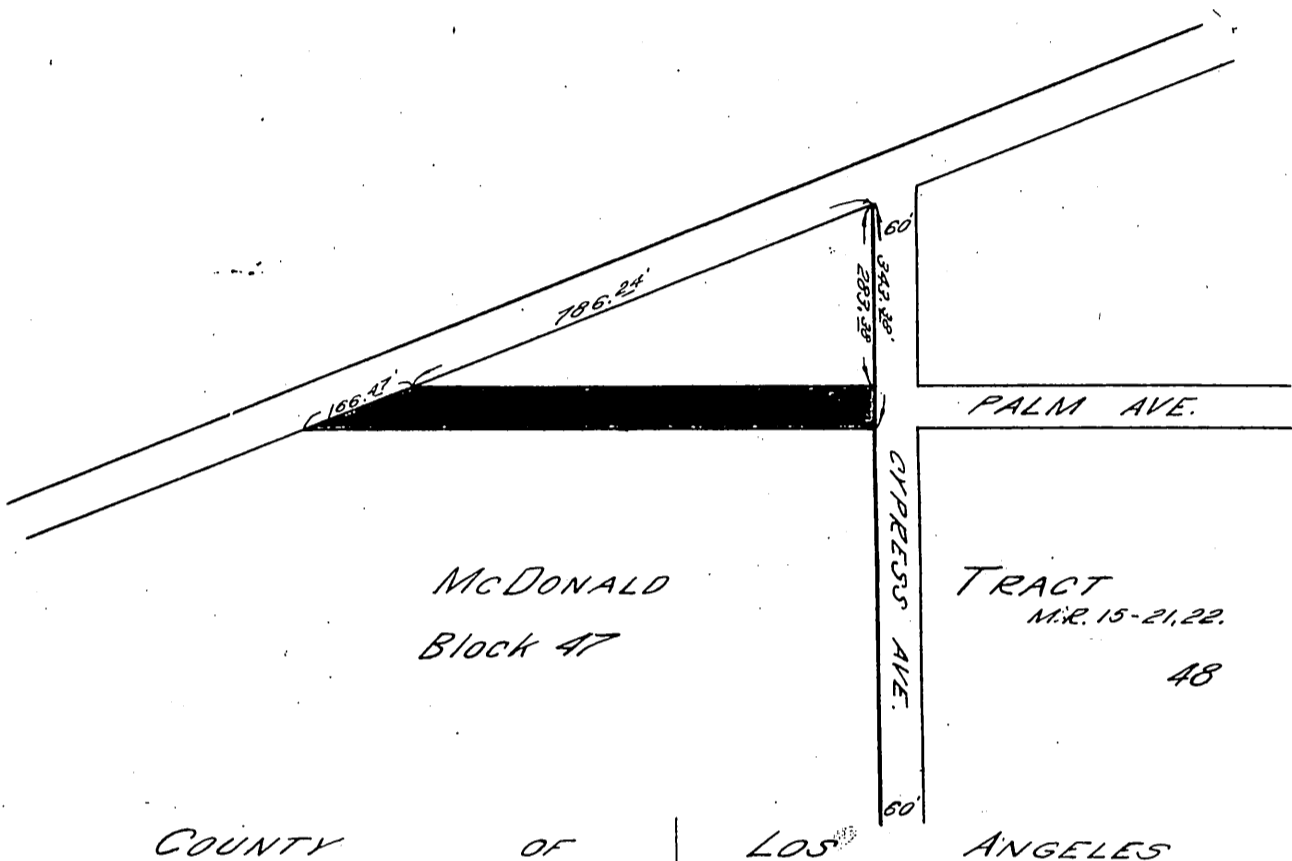
52

ORM 3008-362

362

PACIFIC ELECTRIC RAILWAY COMPANY
TO
COUNTY OF LOS ANGELES

54



COUNTY OF LOS ANGELES

1" = 300'

C.E.K. 907.

Palm Ave. changed to 164th St. D: 88-27 Res. 543
Riverside Redondo Blvd. changed to Redondo Beach Blvd. D: 49-21A

D: 39-131
RECORDED MAR. 6, 1924.

SH. 25
1.88

Comp. W.M.
R.F.

O.R. 3008