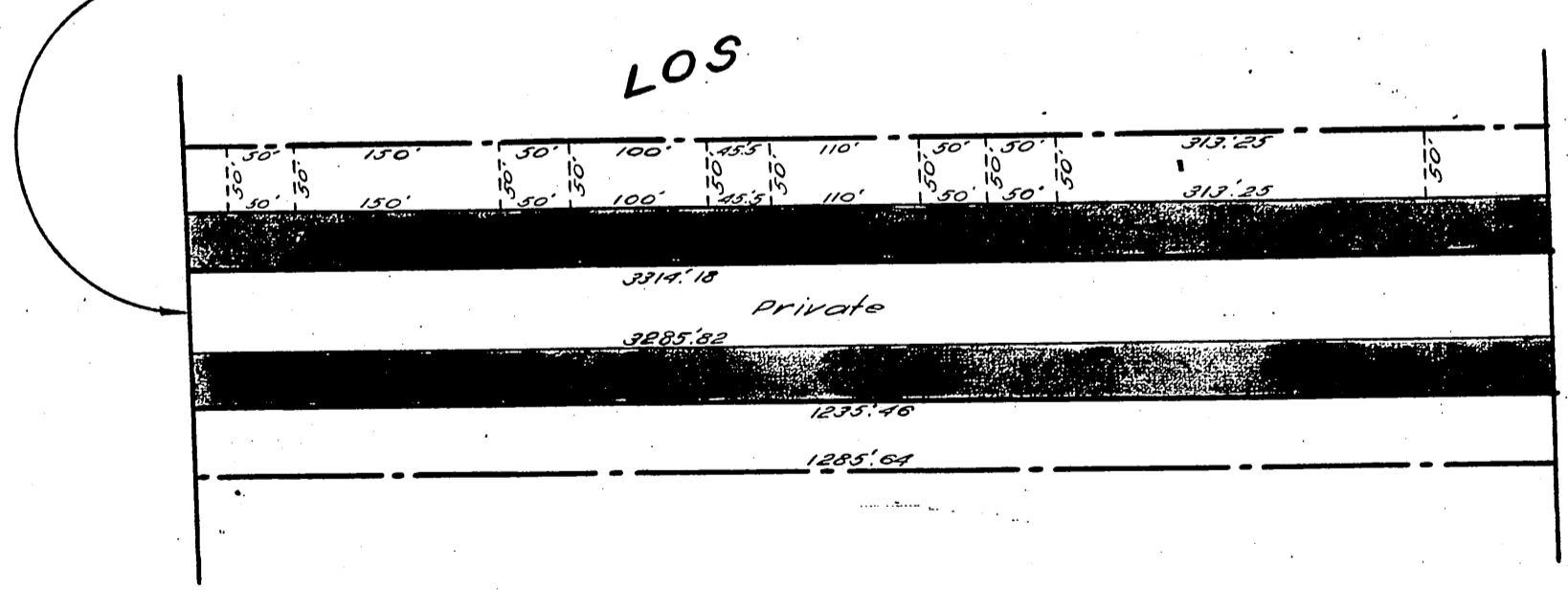
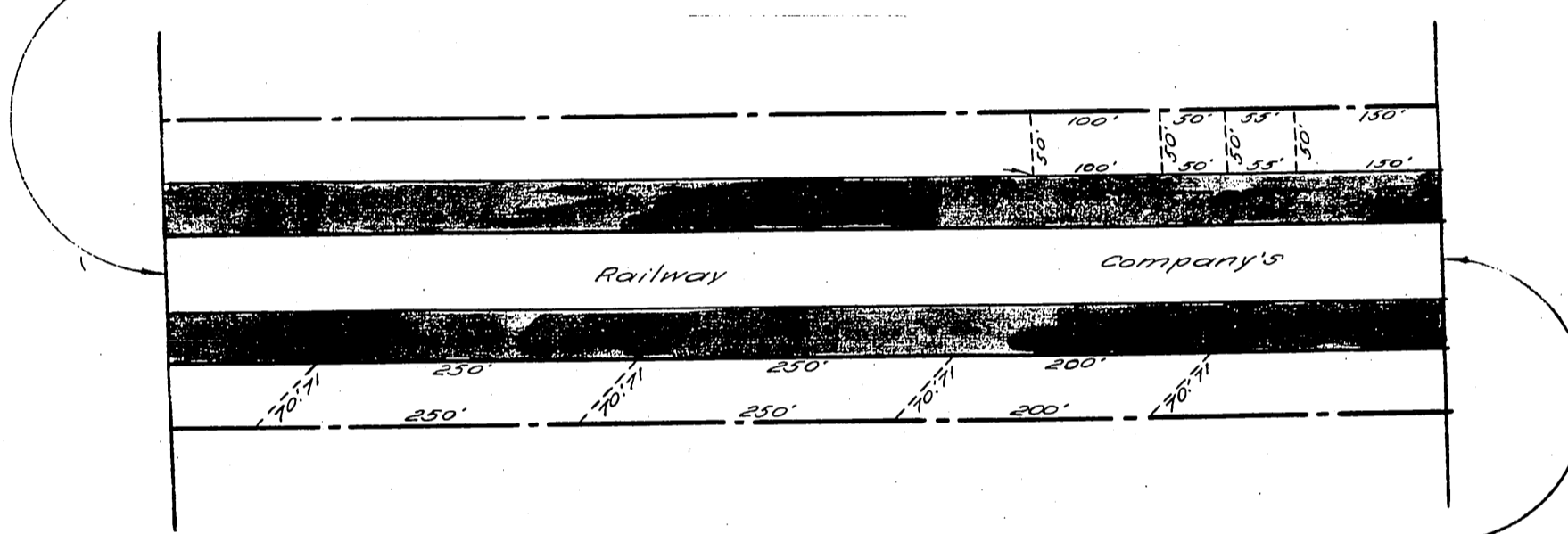
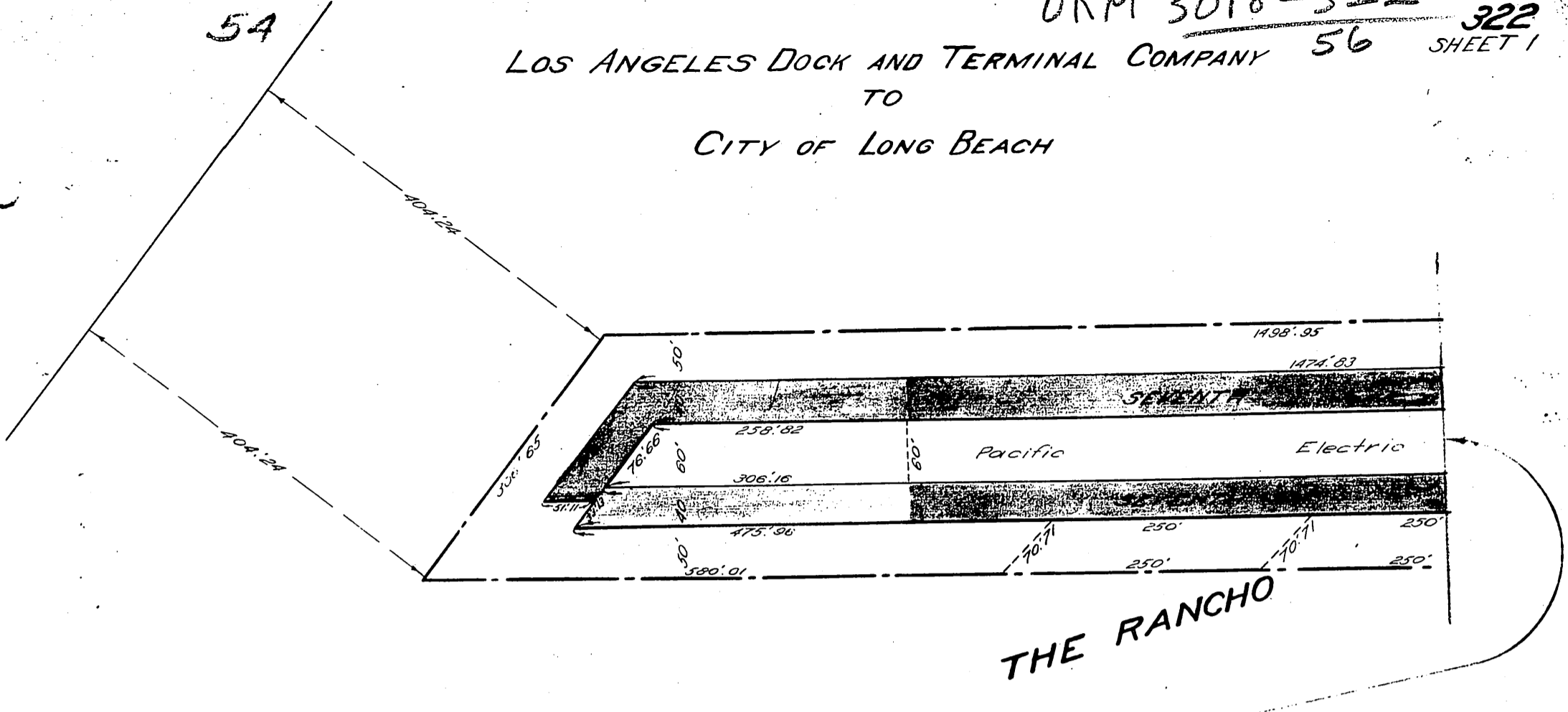


54

ORM 3018-322

322 SHEET 1

LOS ANGELES DOCK AND TERMINAL COMPANY TO CITY OF LONG BEACH



Red and yellow tinted areas are described in deed dated Feb. 22, 1924  
 Red and green areas were deeded Dec. 2, 1913 by deed recorded in Book 5638, page 300.  
 See D: 18-113  
 See D: 18-420 for re-deed.

RECORDED APRIL 4, 1924.

O. R. 3018

