

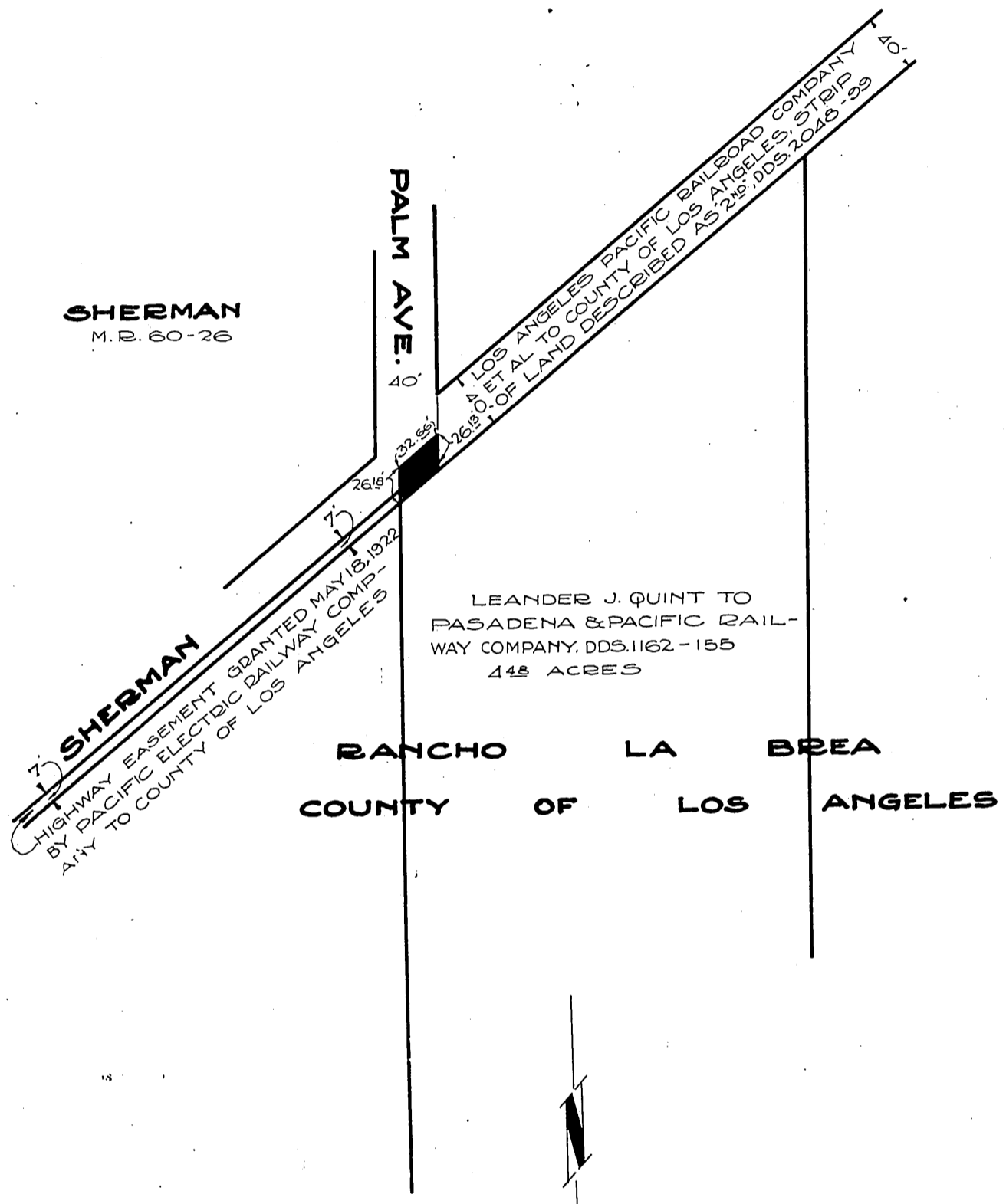
61

PACIFIC ELECTRIC RAILWAY COMPANY
TO
COUNTY OF LOS ANGELES

ORM 3072-145

145

63

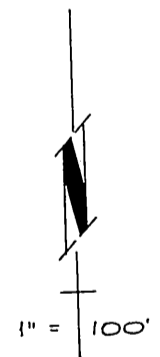


SHERMAN
M.R. 60-26

HIGHWAY EASEMENT GRANTED MAY 18, 1922
BY PACIFIC ELECTRIC RAILWAY COMPANY
TO COUNTY OF LOS ANGELES

LEANDER J. QUINT TO
PASADENA & PACIFIC RAIL-
WAY COMPANY, DDS. 1162-155
448 ACRES

RANCHO LA BREA
COUNTY OF LOS ANGELES



COMP. F.C.K.
D.W.B.

C.E.K. 895

RECORDED JAN. 23, 1925
D: 43-100
Sht 22

O.R. 3072