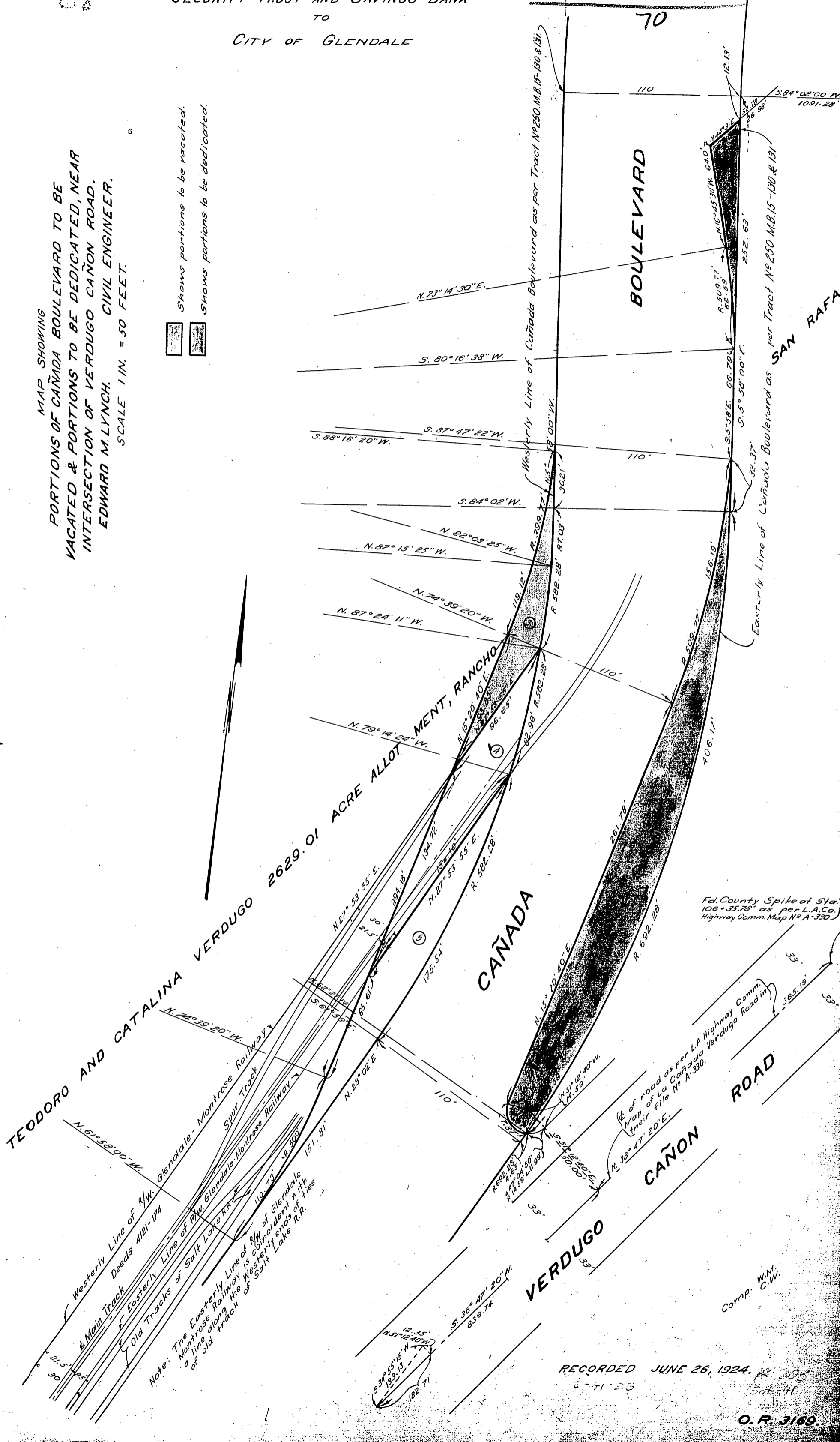


SECURITY TRUST AND SAVINGS BANK
TO
CITY OF GLENDALE

MAP SHOWING
PORTIONS OF CAÑADA BOULEVARD TO BE
VACATED & PORTIONS TO BE DEDICATED, NEAR
INTERSECTION OF VERDUGO CAÑON ROAD.
EDWARD M. LYNCH, CIVIL ENGINEER.
SCALE 1 IN. = 50 FEET.

Shows portions to be vacated.
Shows portions to be dedicated.



Fd. County Spike at Sta. 106+35.78' as per L.A. Co. Highway Comm. Map No. A-330

Center of road as per L.A. Highway Comm. Map of La Cañada Verdugo Road in their File No. A-330.

Note: The Easterly Line of R/W of Glendale Montrose Railway is coincident with a line along the Westerly ends of ties of old track of Salt Lake R.R.

RECORDED JUNE 26, 1924.

Comp. W.M. C.W.