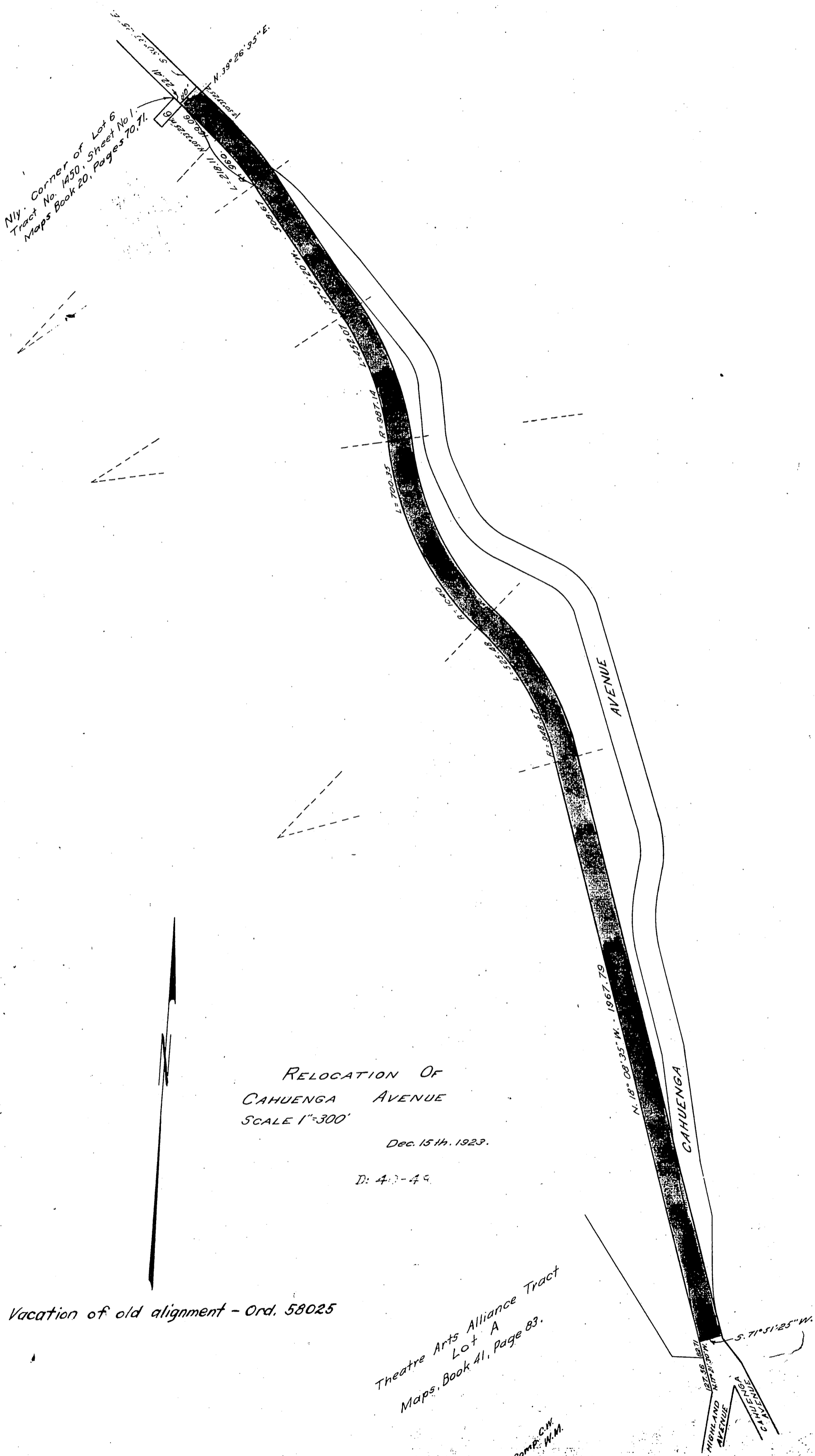


TITLE INSURANCE & TRUST CO., ET AL.

73

TO

THE CITY OF LOS ANGELES



N.W. Corner of Lot 6
 Tract No. 1450, Sheet No. 1,
 Maps Book 20, Pages 70, 71.

RELOCATION OF
 CAHUENGA AVENUE
 SCALE 1"=300'

Dec. 15th. 1923.

D: 40-49

Vacation of old alignment - Ord. 58025

Theatre Arts Alliance Tract
 Lot A
 Maps Book 41, Page 83.

RECORDED MAY 9, 1924.

Comp. C.W.
 W.M.

A-548

sh. 40

O.R. 3174