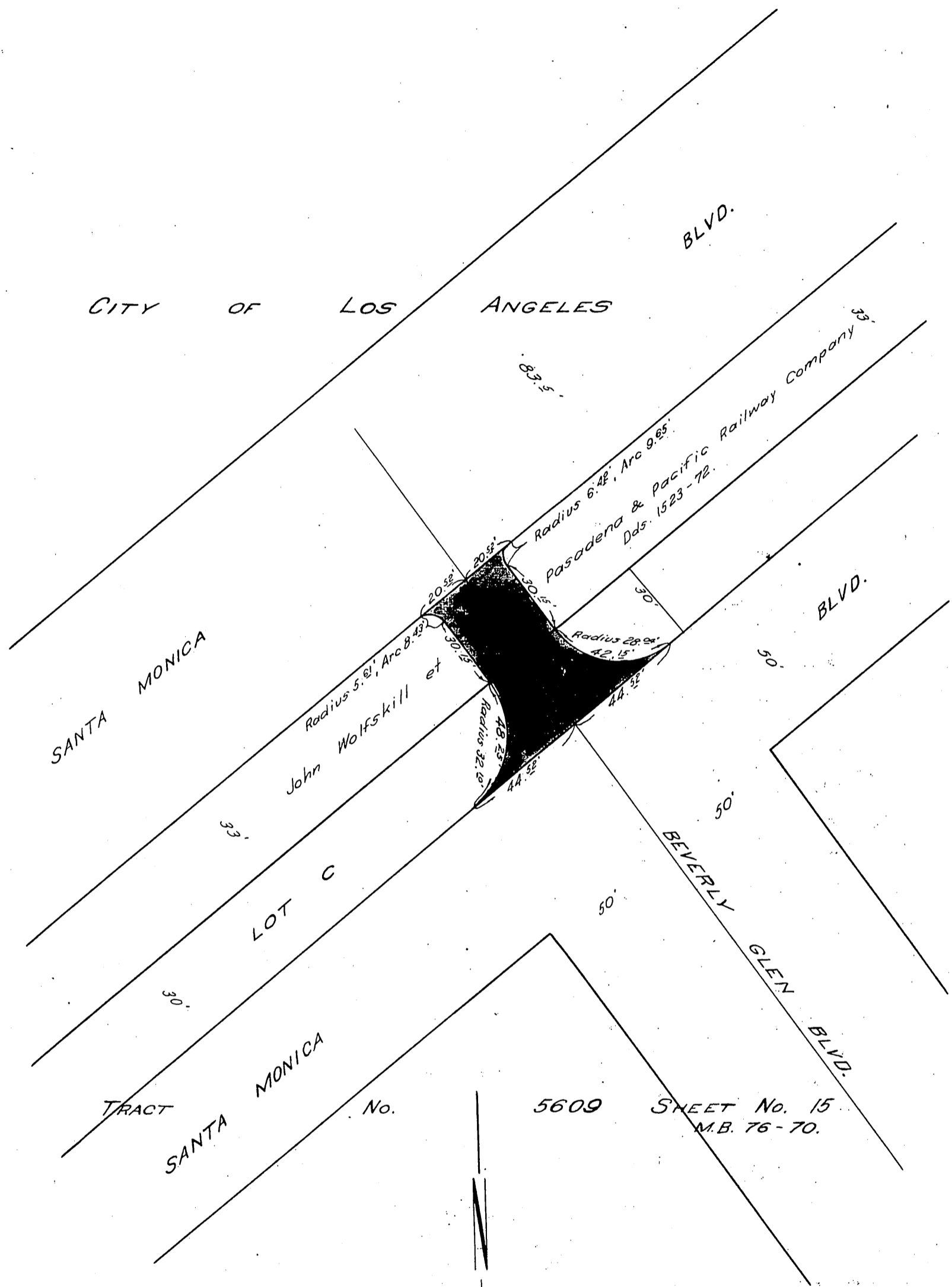


PACIFIC ELECTRIC RAILWAY COMPANY

75

TO

CITY OF LOS ANGELES



SANTA MONICA

BLVD.

CITY OF LOS ANGELES

30.5'

Radius 6.48, Arc 9.85°
Pasadena & Pacific Railway Company
Dds. 1523-72.

Radius 5.81, Arc 8.42°
John Wolfskill et

Radius 28.94, Arc 42.15°

BLVD.

LOT C

50'

BEVERLY GLEN BLVD.

TRACT

SANTA MONICA

No.

5609

SHEET No. 15
M.B. 76-70.

40'

D: 10-57

C.E.K. 946

Comp. W.M.
C.W.

RECORDED JUNE 25, 1924.

A544
Sht. 21
O.R. 3399.