

12.13 Acres

76

For Vacation See D: 59-275 Ord. 2605.  
Naming of Church St. D: 66-52 Ord. 2644.

Comp. W.M.  
C.W.

RECORDED JUNE 17, 1924.

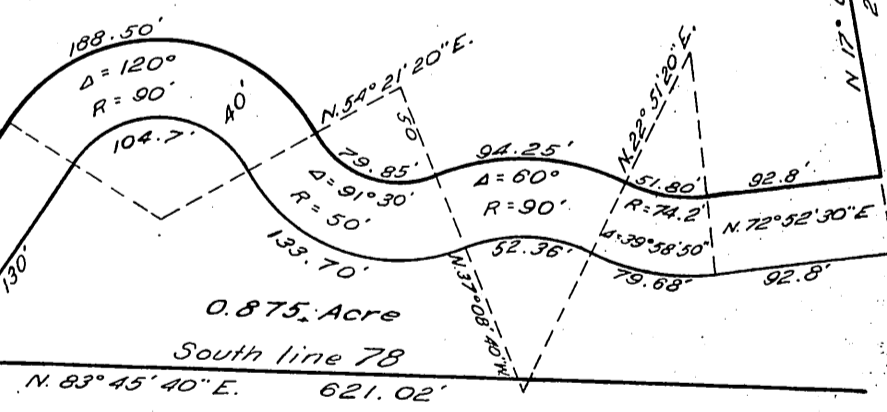
A 79  
547-41

O.R. 3458

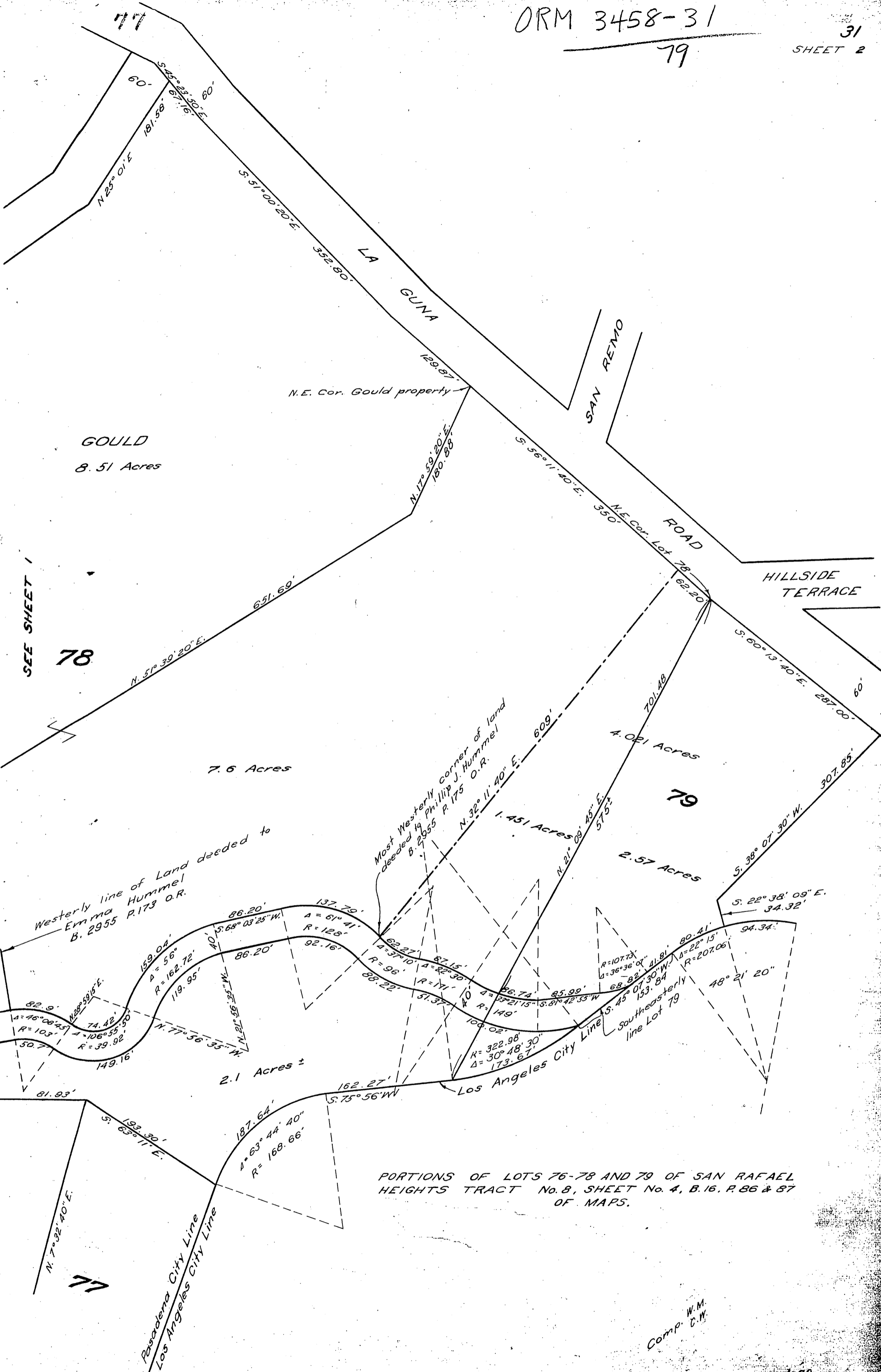
SEE SHEET 2

LOT B  
M.R. 66 - 48.50  
NOT A PORTION OF THIS TRACT

Corner of land deeded to Bernard Paradise  
in Book 3755 page 358 of Deeds.  
Most southerly corner  
et al recorded



79



SEE SHEET 1

GOULD  
8.51 Acres

78

7.6 Acres

Westerly line of Land deeded to  
Emma Hummel  
B. 2955 P. 173 O.R.

Most Westerly corner of land  
deeded to Phillip J. Hummel  
B. 2955 P. 175 O.R.

4.021 Acres

79

2.57 Acres

2.1 Acres ±

PORTIONS OF LOTS 76-78 AND 79 OF SAN RAFAEL  
HEIGHTS TRACT No. 8, SHEET No. 4, B. 16, P. 86 & 87  
OF MAPS.

Comp. W.M.  
C.W.

RECORDED JUNE 17, 1924.

A-79  
S-41  
O.R. 3458