

T. B. PASSONS

87

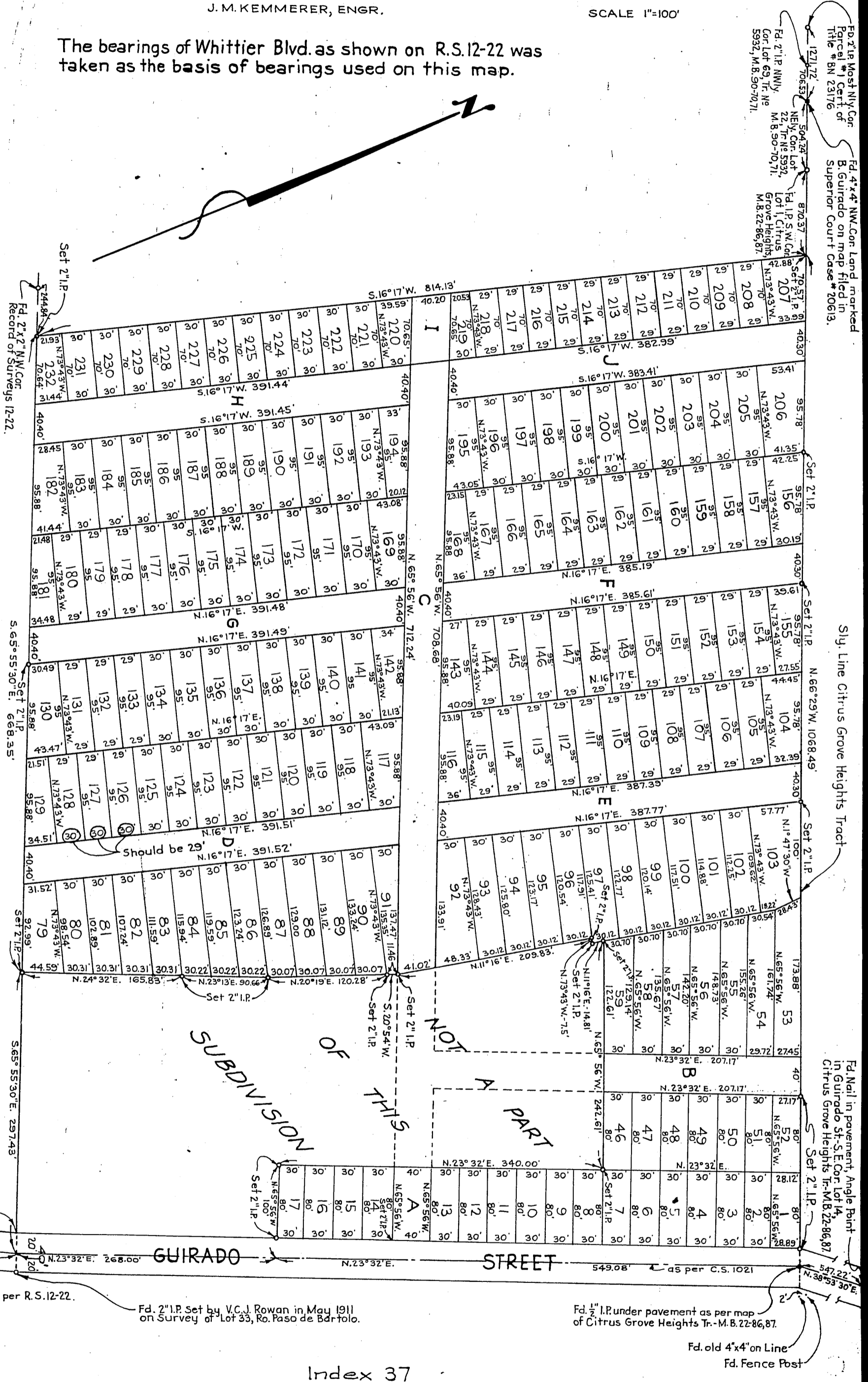
IT BEING A PORTION OF  
THE RANCHO PASO DE BARTOLO FINALLY CONFIRMED TO  
PIO PICO AND JUAN PEREZ AS PER BOOK 3 PAGES 130-131 OF  
PATENTS RECORDS OF LOS ANGELES COUNTY CALIFORNIA.

JUNE, 1923

J. M. KEMMERER, ENGR.

SCALE 1"=100'

The bearings of Whittier Blvd. as shown on R.S. 12-22 was taken as the basis of bearings used on this map.



Fd. 2 1/2" x 4" NW Cor. Land marked Parcel #1 Cert of Title # 8N 23176

Fd. 4 1/4" NW Cor. Land marked B. Guirado on map filed in Superior Court Case # 20613.

Sly. Line Citrus Grove Heights Tract

Fd. Nail in pavement, Angle Point in Guirado St. S. E. Cor. Lot 14, Citrus Grove Heights Tr. M.B. 22-86, 87

Fd. 2 1/2" I.P. under pavement as per map of Citrus Grove Heights Tr. - M.B. 22-86, 87.

Fd. old 4"x4" on Line

Fd. Fence Post

Index 37

Guirado Street changed to Guirado Avenue - E: 49-14, Min. Bk. 251-201

RECORDED DEC. 13, 1924

O.R. 3498