

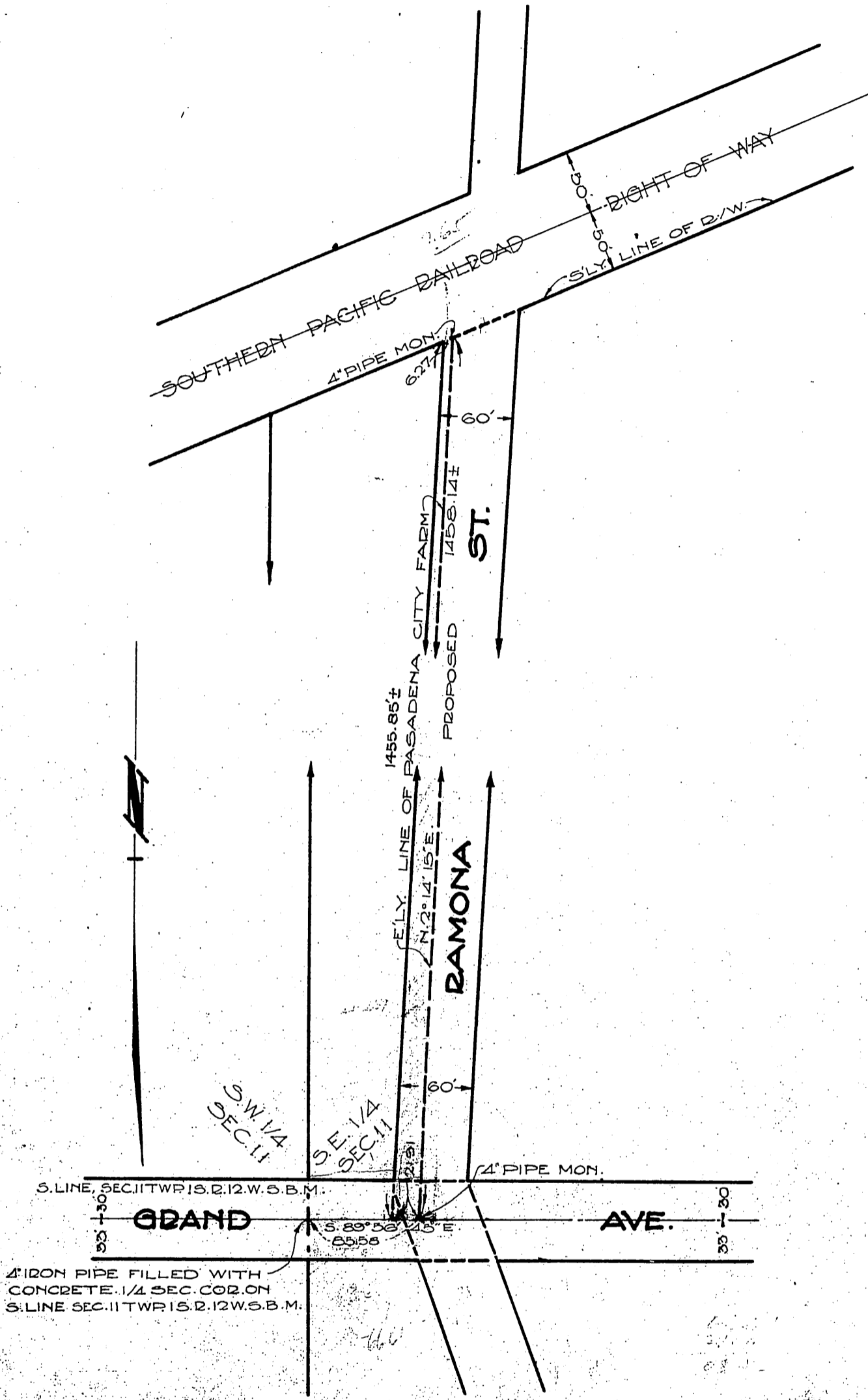
88

CITY OF PASADENA
TO
CITY OF SAN GABRIEL

ORM 3510-387

387

91



4" IRON PIPE FILLED WITH CONCRETE. 1/4 SEC. COR. ON S. LINE SEC. 11 TWP. 15.2. 12W. S.B.M.

DRAWN BY *J. H. C. M. S.*
 CHECKED BY *J. H. C. M. S.*
 FIELD BOOKS
 DEPUTY CITY ENGINEER
 APPROVED *W. C. Earle*
 CITY ENGINEER & SUPT. OF STREETS

CITY OF PASADENA
 OFFICE OF CITY ENGINEER & SUPERINTENDENT OF STREETS
 LAND TO BE CONVEYED BY THE CITY OF PASADENA TO THE CITY OF SAN GABRIEL FOR OPENING AND EXTENDING RAMONA AVENUE.

DATE OCT. 1924
 SCALE 1" = 100'
 DRAWING NUMBER
G-306

RECORDED DEC. 26, 1924
 D:44-259-ORM-3923-274
 D:41-268-ORM-3510-381
 Por. W. of D:44-259-VAC. D:80-231-Res. 278
 D:41-269
 D:44-261

COMP. FOR
 SH. 44
 1-376
 1-715

02 24