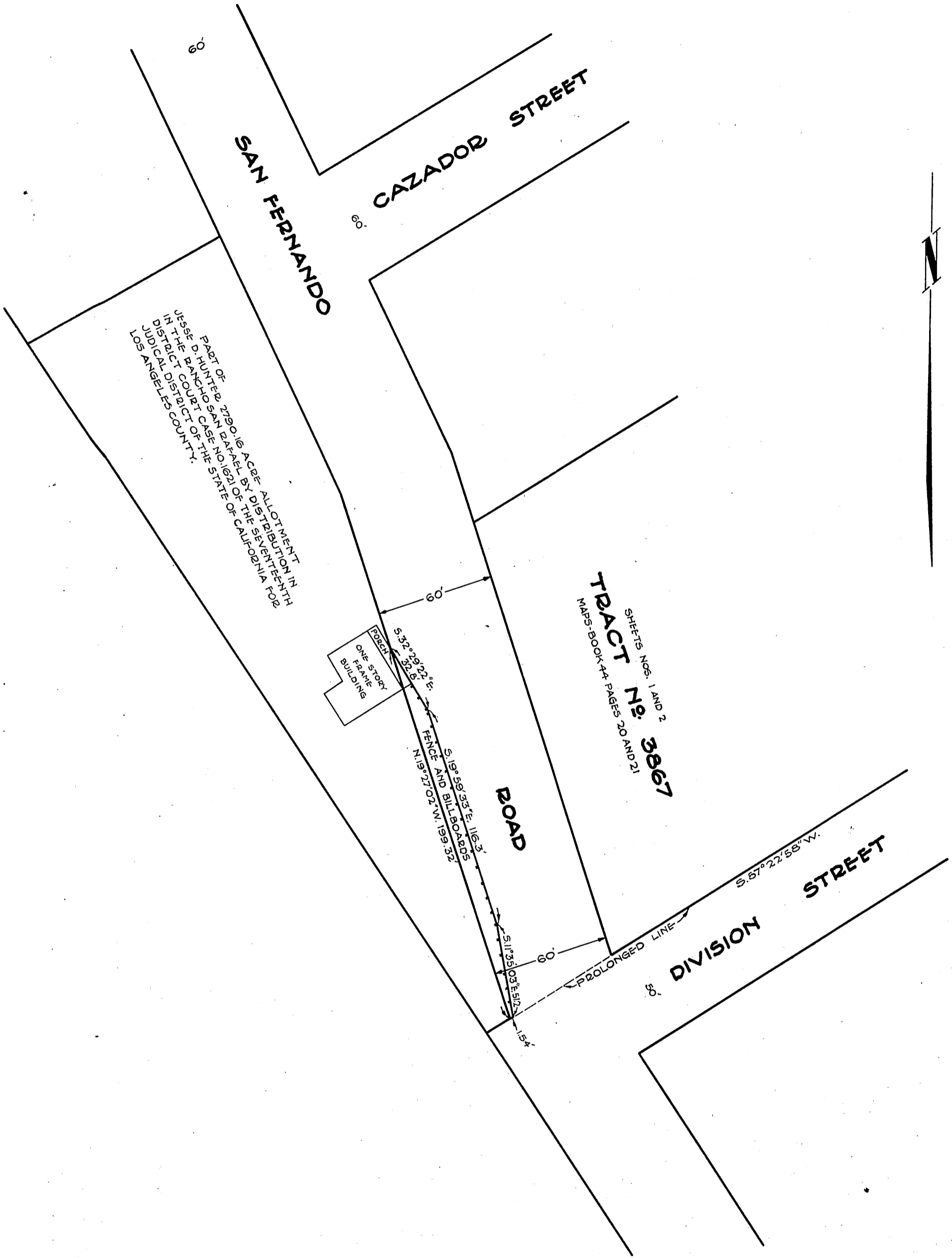


LOUIS SIMON
TO
CITY OF LOS ANGELES

ORM 3983-381

18

18



PART OF 2590.16 ACRES ALLOTMENT IN
JESSE D. HUNTER SAN RAFAEL BY DISTRIBUTION IN
DISTRICT COURT CASE NO. 1621 OF THE SEVENTEENTH
JUDICIAL DISTRICT OF THE STATE OF CALIFORNIA FOR
LOS ANGELES COUNTY.

SHEETS Nos. 1 AND 2
TRACT No. 3867
MAPS BOOK 44 PAGES 20 AND 21

Sht 41
D: 40-EB2-AR 3983-379

COMP. P.C.K.
A.J.O.