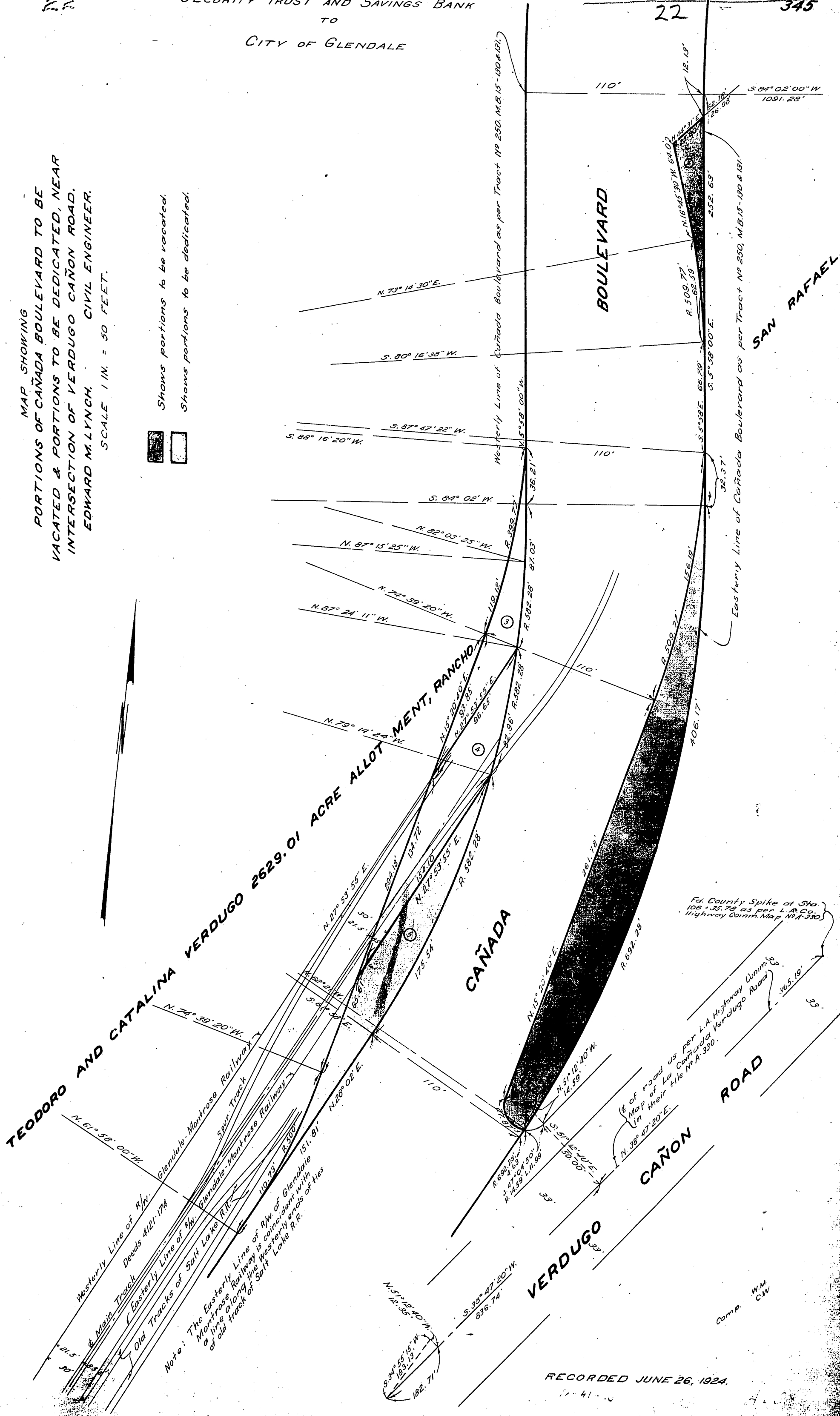


MAP SHOWING
PORTIONS OF CAÑADA BOULEVARD TO BE
VACATED & PORTIONS TO BE DEDICATED, NEAR
INTERSECTION OF VERDUGO CAÑON ROAD,
EDWARD M. LYNCH, CIVIL ENGINEER.
SCALE 1 IN. = 50 FEET.

Shows portions to be vacated.
Shows portions to be dedicated.



Note: The Easterly Line of R/W of Glendale Montrose Railway is coincident with a line along the westerly ends of ties of old track of Salt Lake R.R.

Fd. County Spike at Sta. 106+35.78 as per L.A. Co. Highway Comm. Map No. A-330.
Map of Los Angeles Highway Comm. in their file No. A-330.

RECORDED JUNE 26, 1924.

Comp. W.M. CW