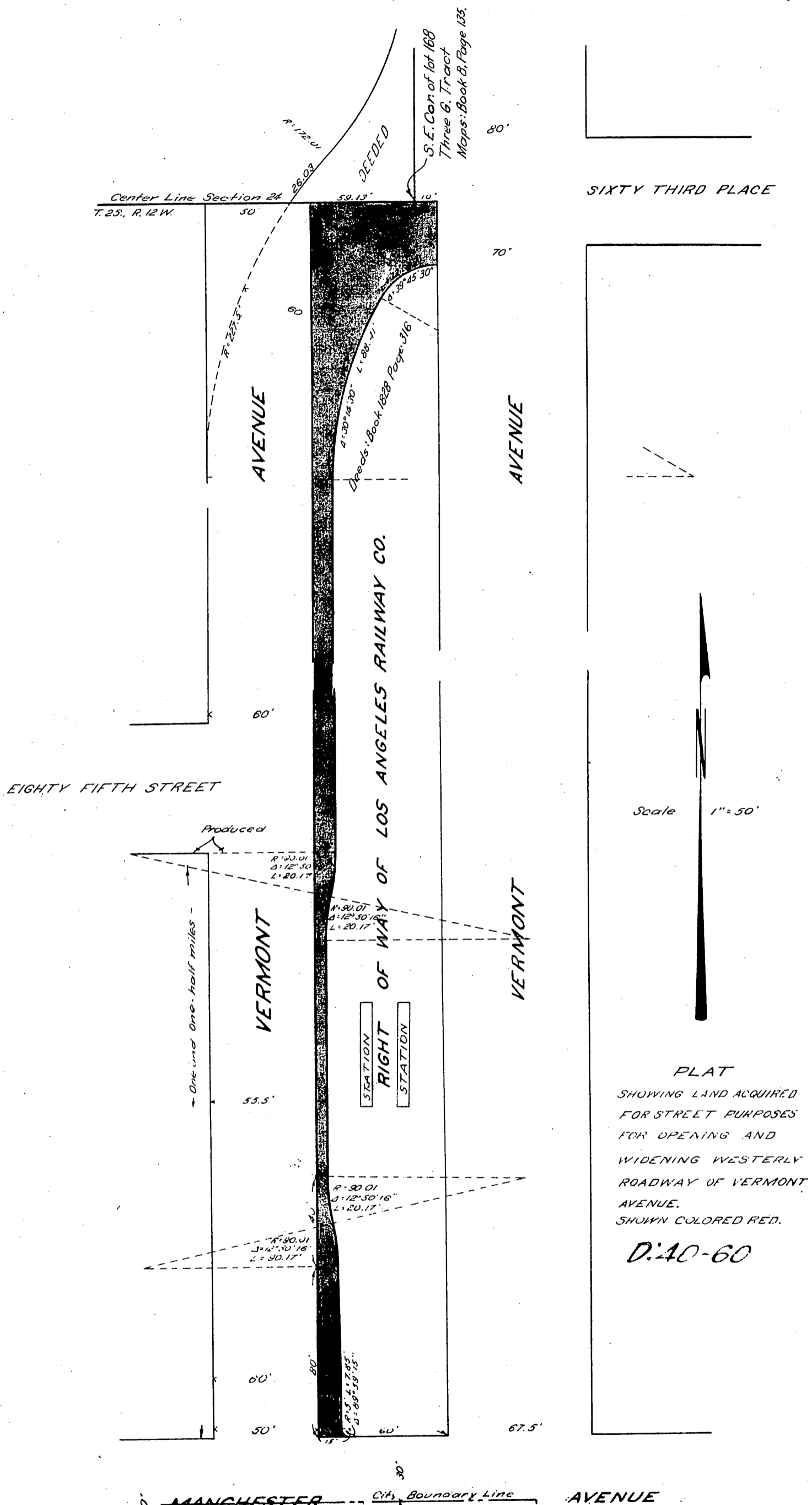


LOS ANGELES RAILWAY CORPORATION  
TO  
THE CITY OF LOS ANGELES

23



PLAT  
 SHOWING LAND ACQUIRED  
 FOR STREET PURPOSES  
 FOR OPENING AND  
 WIDENING WESTERLY  
 ROADWAY OF VERMONT  
 AVENUE.  
 SHOWN COLORED RED.  
 D:40-60

RECORDED JULY 10, 1924.

Comp. W.M.  
C.W.

517 24  
O.R. 4014

A:19  
A:512  
A:202