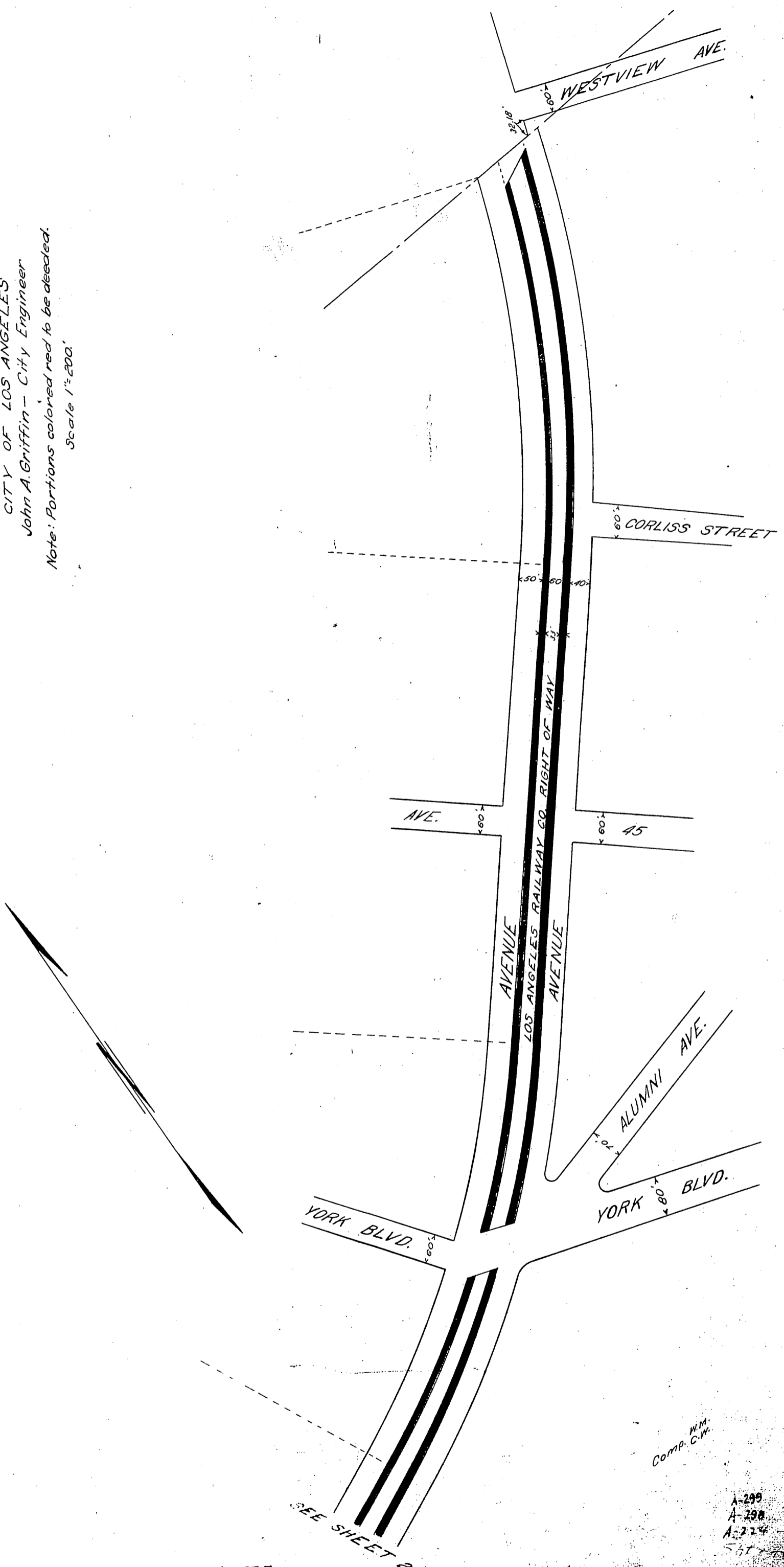


SKETCH
OF
GLASSELL AVENUE
FROM
32.18' S. OF WESTVIEW AVE TO VERDUGO RD
SHOWING
PORTIONS OF LOS ANGELES RR TO BE DECEDED TO THE CITY OF
LOS ANGELES FOR STREET PURPOSES
CITY OF LOS ANGELES
John A. Griffin - City Engineer
Note: Portions colored red to be deeded.
Scale 1"=200'



D:40 275

RECORDED JULY 17, 1924.

SEE SHEET 2

W.M.
COMP. C.W.

A-299
A-298
A-224
5/17/24

ORM 4052

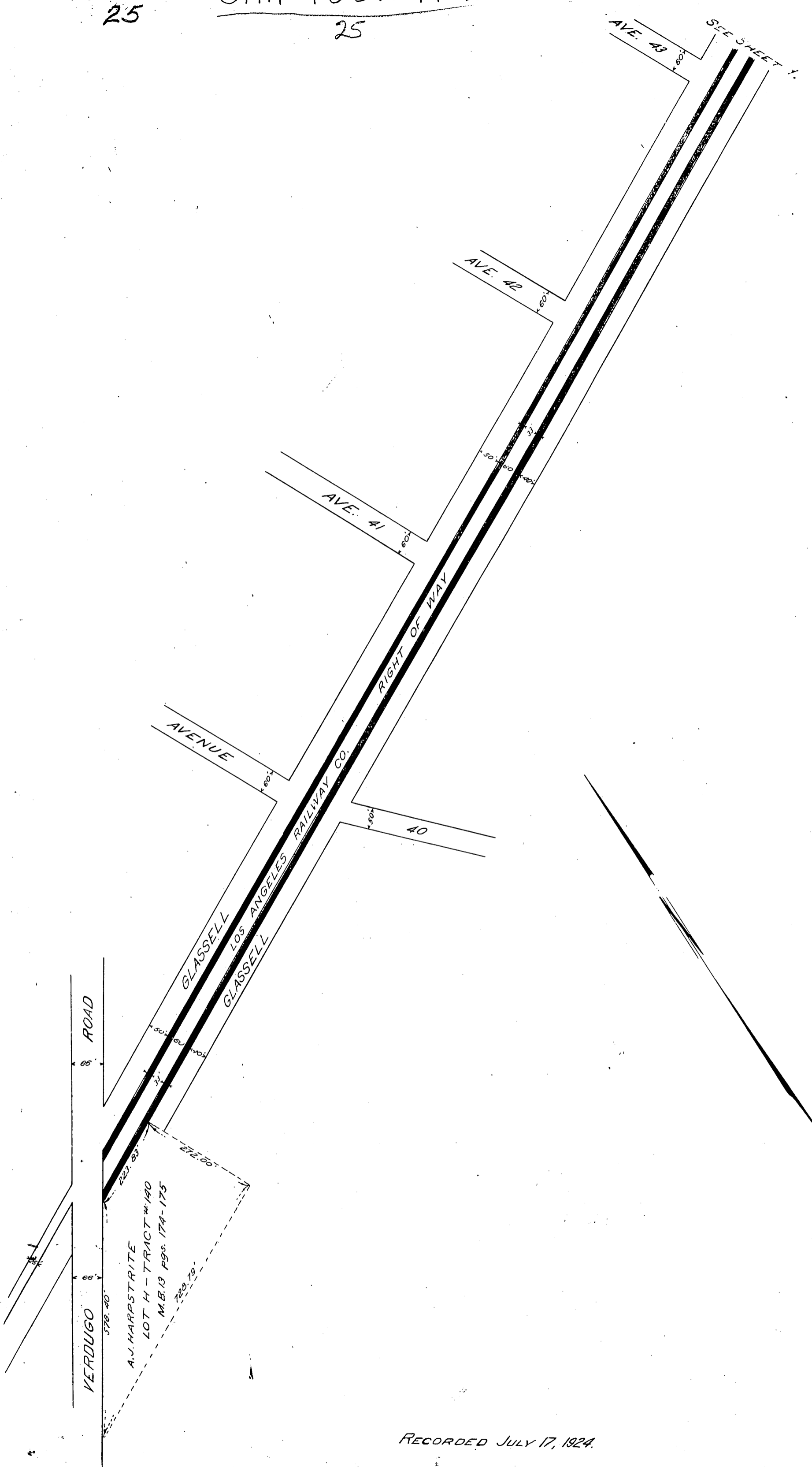
25

ORM 4052-19-2

25

19

SHEET 2



RECORDED JULY 17, 1924.

A-299
i-298
A-224
7-41

O.R. 4052.