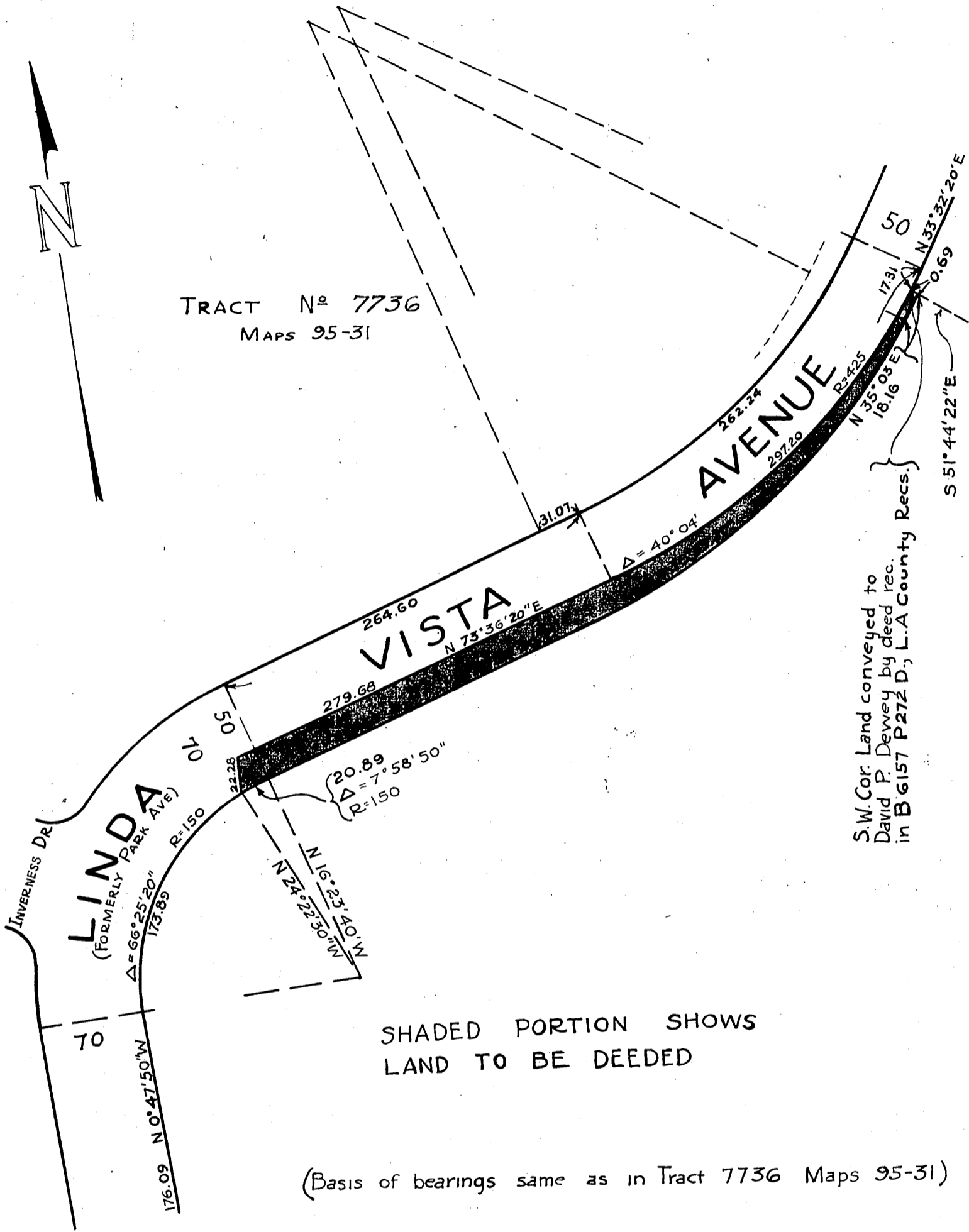


32 LA VISTA HOMESITES INC., ORM 4424-63
 TO
 CITY OF PASADENA

63

32



S.W. Cor. Land conveyed to David P. Dewey by deed rec. in B 6157 P 272 D; L.A. County Recs. S 51° 44' 22\"/>

SHADED PORTION SHOWS LAND TO BE DEEDED

(Basis of bearings same as in Tract 7736 Maps 95-31)

DRAWN BY B.H. CHECKED BY <i>VE MUD</i> FIELD BOOKS <i>Allen</i> DEPUTY CITY ENGINEER APPROVED <i>W.C. Earle</i> CITY ENGR. & SUPT. OF STREETS	CITY OF PASADENA OFFICE OF CITY ENGINEER & SUPERINTENDENT OF STREETS PLAT SHOWING PROPOSED WIDENING OF LINDA VISTA AVE. SOUTHEAST OF TRACT No. 7736	DATE APRIL 1925 SCALE 1" = 80' DRAWING NUMBER. G-370
---	---	--

D: 44-178
 Sht. 41
 A-79

COMP. JEM
 P.C.K.