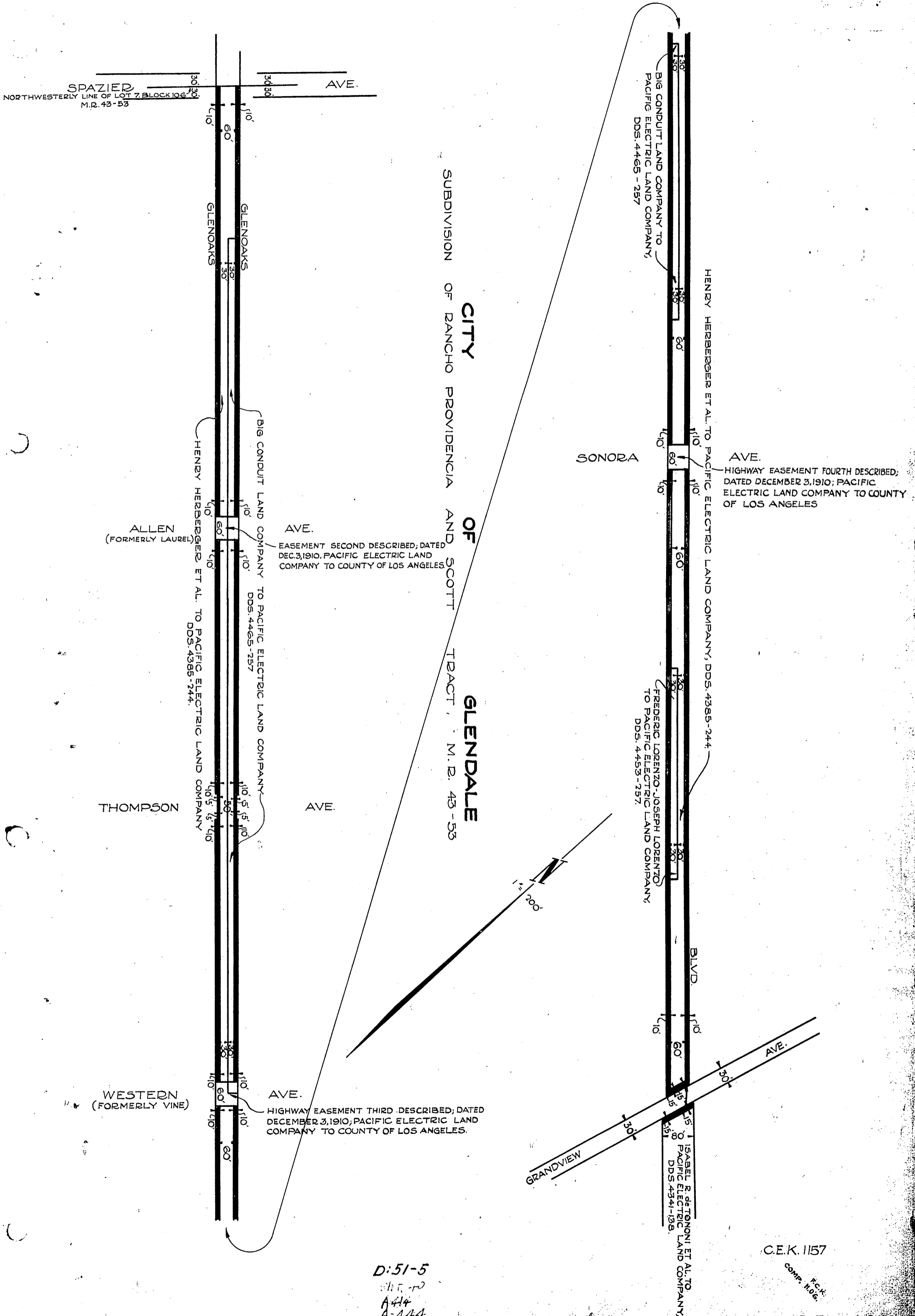


PACIFIC ELECTRIC RAILWAY COMPANY  
TO  
CITY OF GLENDALE

ORM 4480-216

47

47



D:51-5

CH. 70  
A-44  
A-444

RECORDED SEPT. 3, 1925

C.E.K. 1157

Comp. 1105  
F.C.K.

O.R. 4480