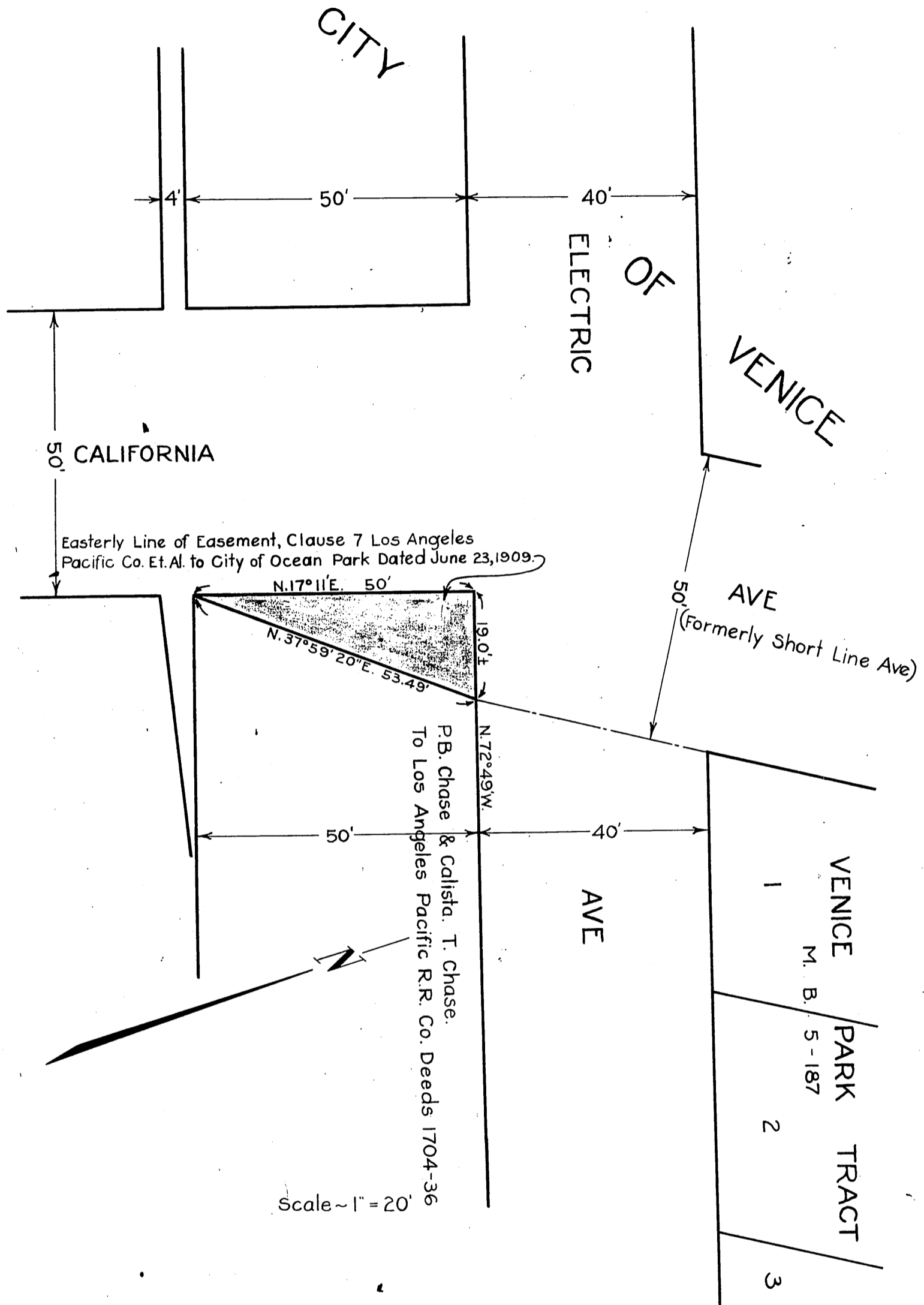


42

PACIFIC ELECTRIC RAILWAY COMPANY
TO
CITY OF VENICE

ORM 4480-389
48



Easterly Line of Easement, Clause 7 Los Angeles Pacific Co. Et. Al. to City of Ocean Park Dated June 23, 1909.

P.B. Chase & Calista. T. Chase.
To Los Angeles Pacific R.R. Co. Deeds 1704-36

Scale ~ 1" = 20'

CEK. 1175

Comp. J.C.K.
F.C.K.

For California Ave. vacated ~ Ord. 56927

D:51-119

Sht. 23

RECORDED NOV. 16, 1925.

O.R. 4480