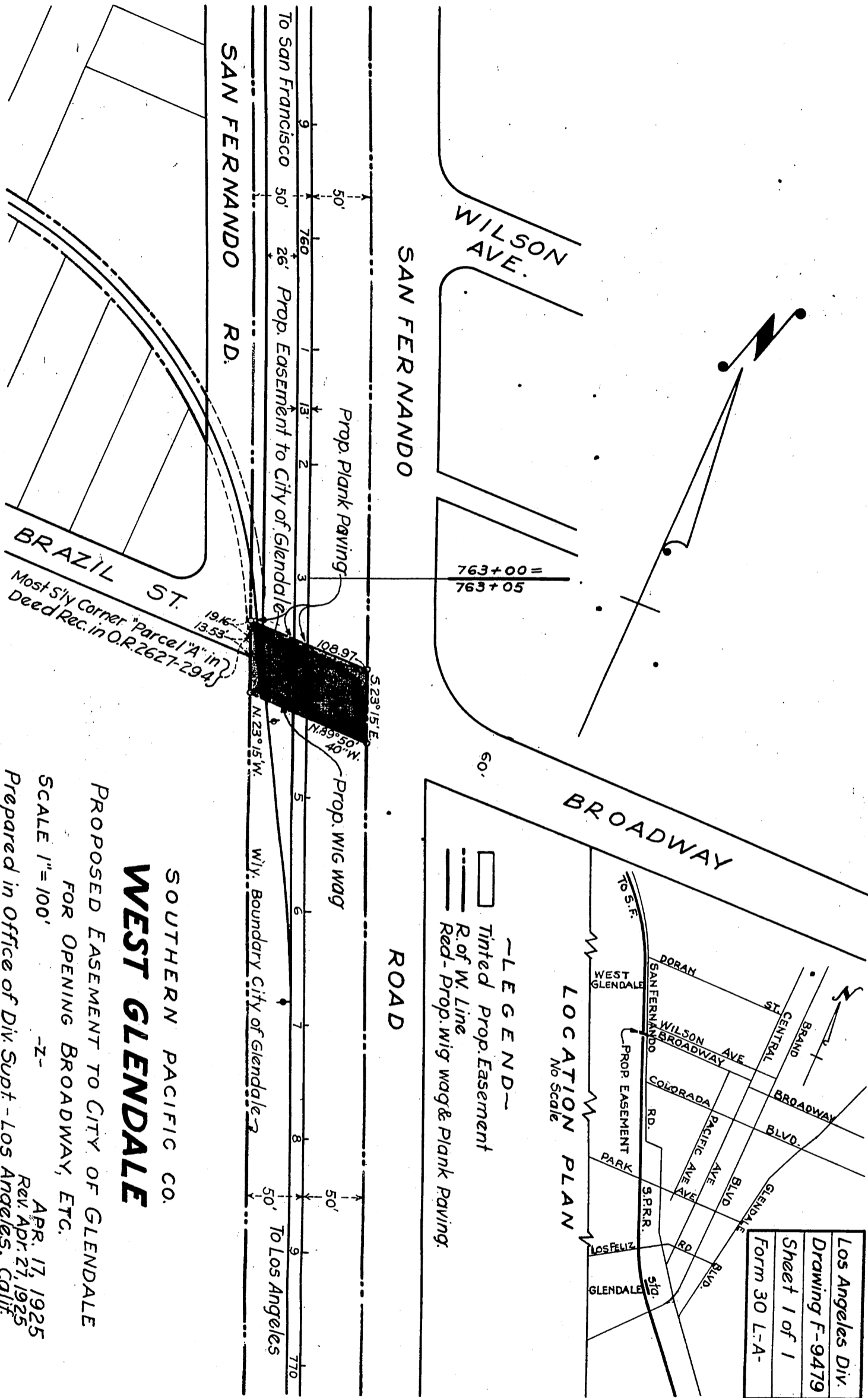


SOUTHERN PACIFIC RAILROAD COMPANY  
TO  
CITY OF GLENDALE

ORM-4557-92

61

61 51140



SOUTHERN PACIFIC CO.  
**WEST GLENDALE**  
 PROPOSED EASEMENT TO CITY OF GLENDALE  
 FOR OPENING BROADWAY, ETC.  
 SCALE 1"=100'  
 -Z-  
 APR. 17, 1925  
 Rev. APR. 27, 1925  
 Prepared in Office of Div. Supt. - Los Angeles, Calif.

D:51-272

A 77

RECORDED DEC. 15, 1925.

O.R. 4557