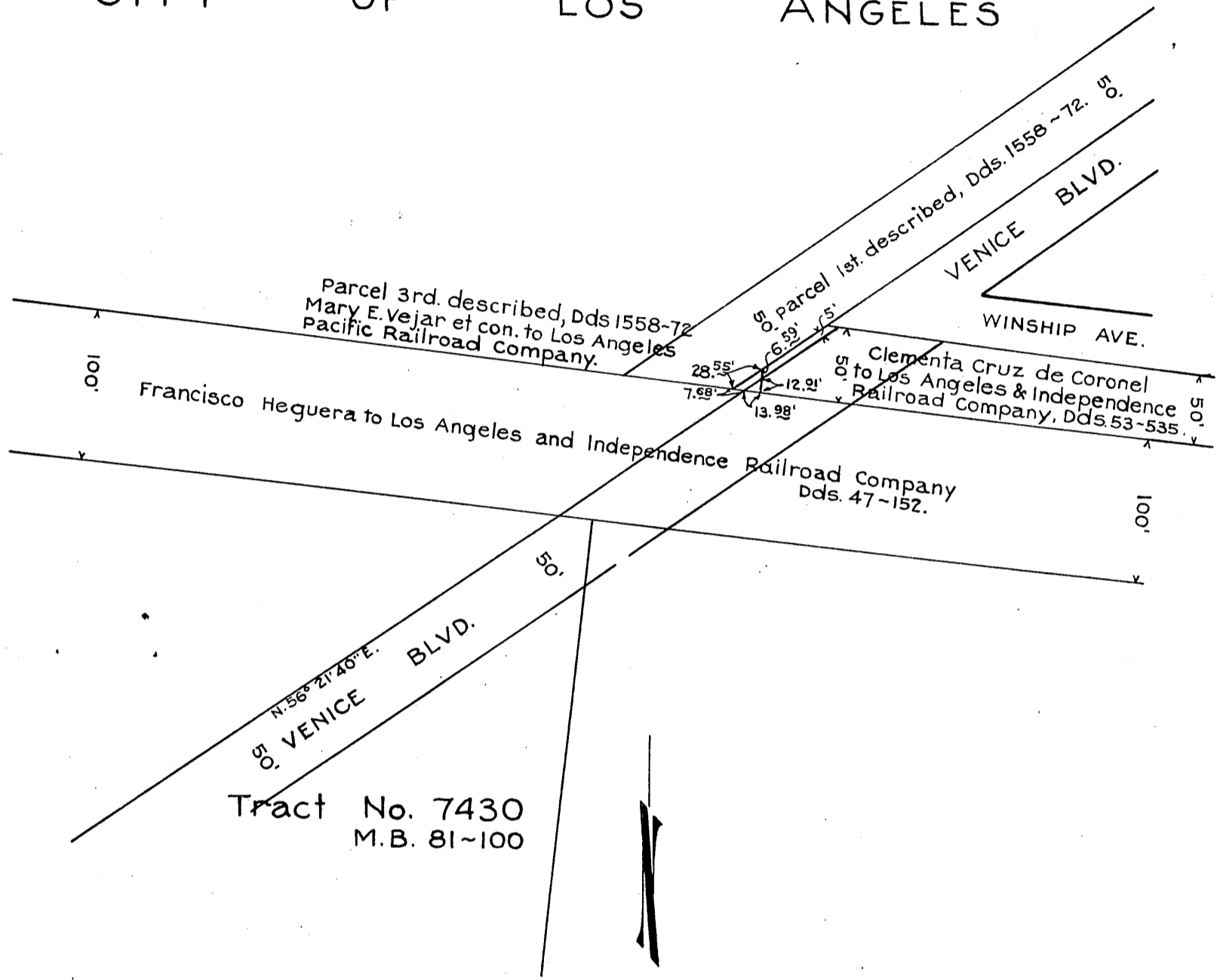


SOUTHERN PACIFIC RAILROAD COMPANY  
TO  
CITY OF LOS ANGELES

ORM-4620-120

75

CITY OF LOS ANGELES



Tract No. 7430  
M.B. 81-100

1" = 100'

C.E.K 1170

D:54-17  
Sht. 22

For correction see  
O.R.M. 4801-104

Comp. L.C.  
G.C.W.

RECORDED APRIL 29, 1926.

O.R. 4620