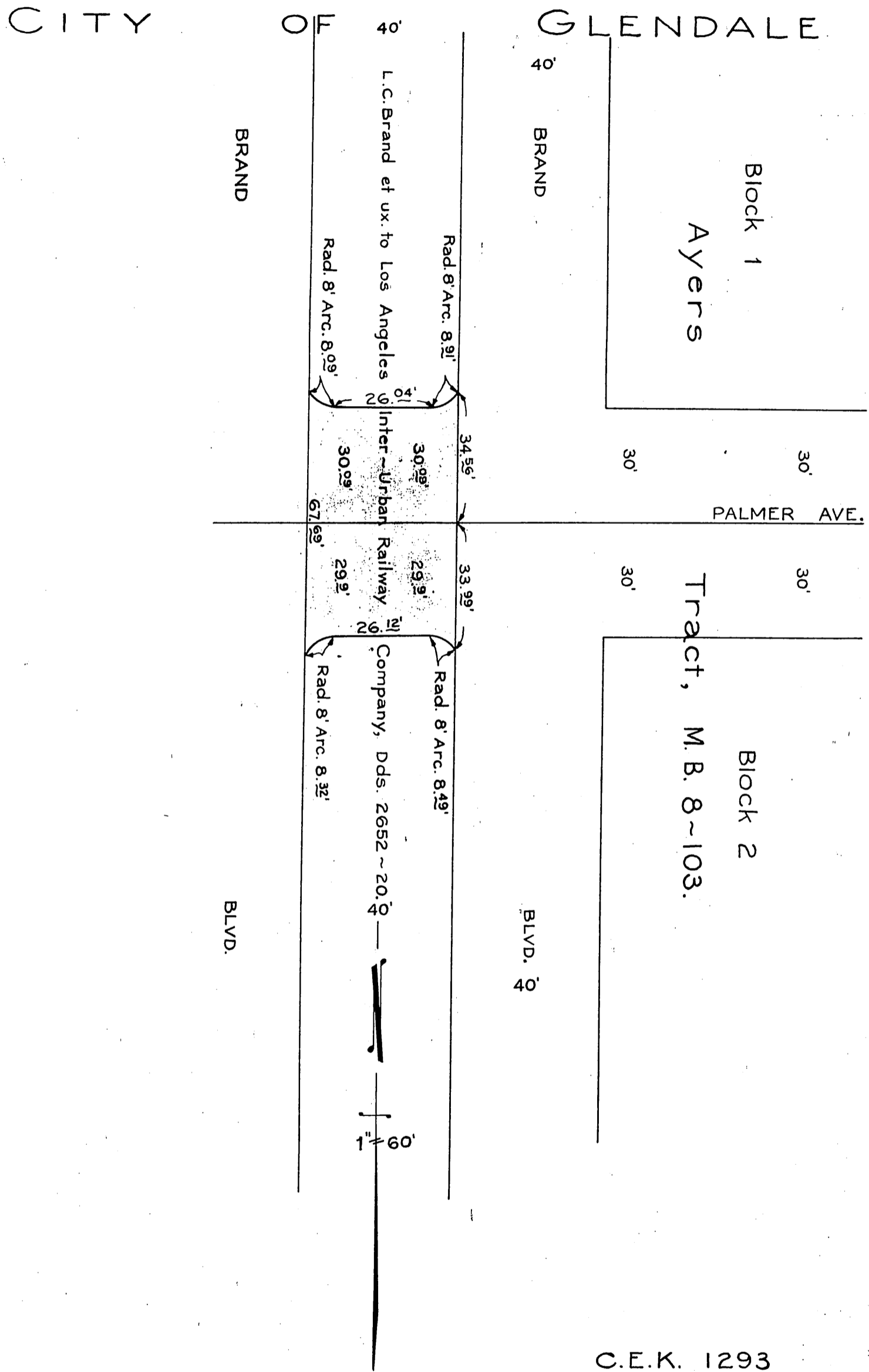


PACIFIC ELECTRIC RAILWAY COMPANY  
TO  
CITY OF GLENDALE

ORM-4651-311  
83



C.E.K. 1293

L.C.  
Comp. JGH.

See O.R.M. 3880-392

Sht. 41

D.53-224

RECORDED JULY 10, 1926.

O.R. 4651