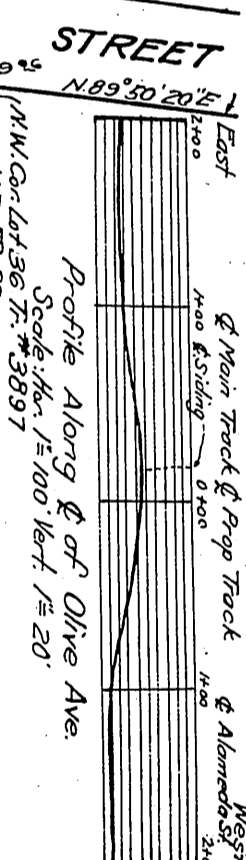
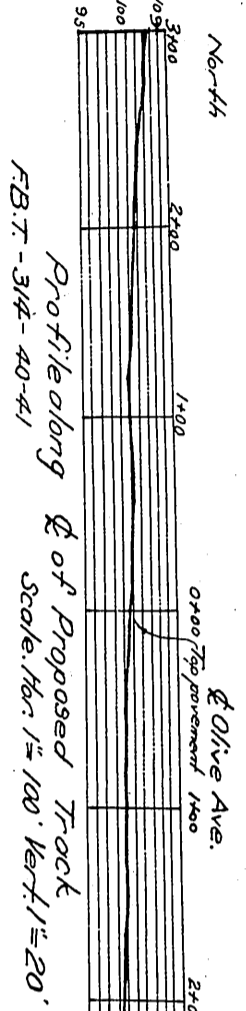
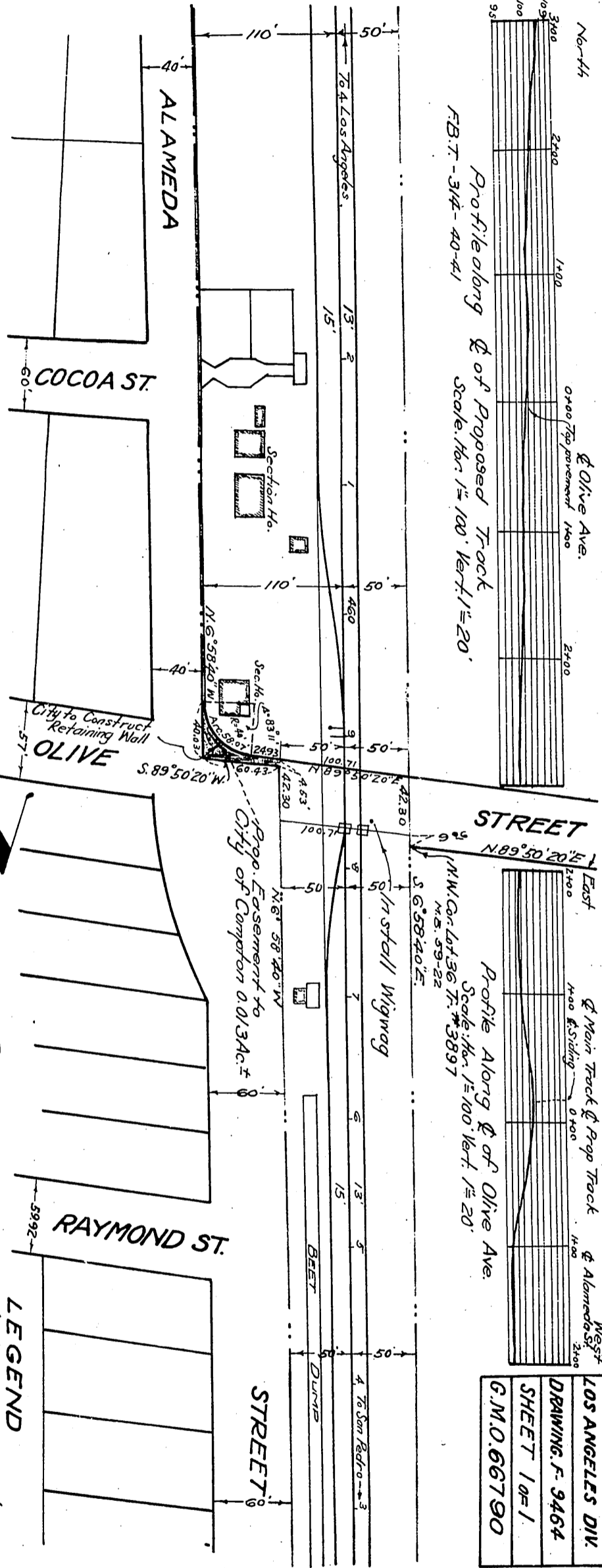
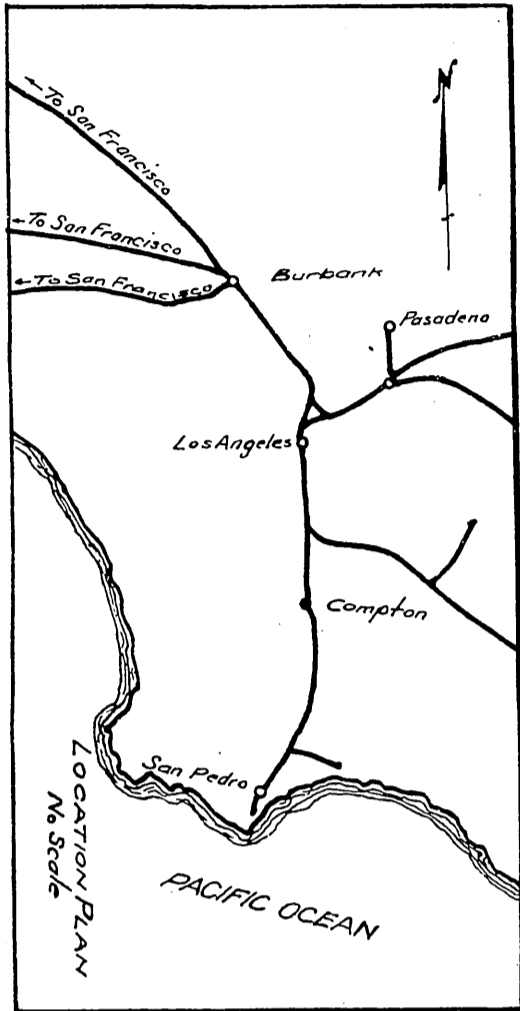


TO CITY OF COMPTON



LOS ANGELES DIV
DRAWING F- 9464
SHEET 1 of 1
C.M.O. 66790

LEGEND
 Tinted Prop. Easement
 Red - Retaining Wall to be Constructed by City
 Brown - R. of W. Line

SOUTHERN PACIFIC CO.
COMPTON
 Proposed Easement to City of Compton
 for Widening of Olive St.
 Scale 1"=100'
 March 31, 1925
 Rev. June 4, 1926
 Prepared in the Office of Div. Supt. Los Angeles Calif.

Sht. 32
 Sh. # 26
 See C.S.B-352 for Title Search
 D: 56-88
 REC. OCT. 19, 1926

6 of 116
 Bath

OR 410