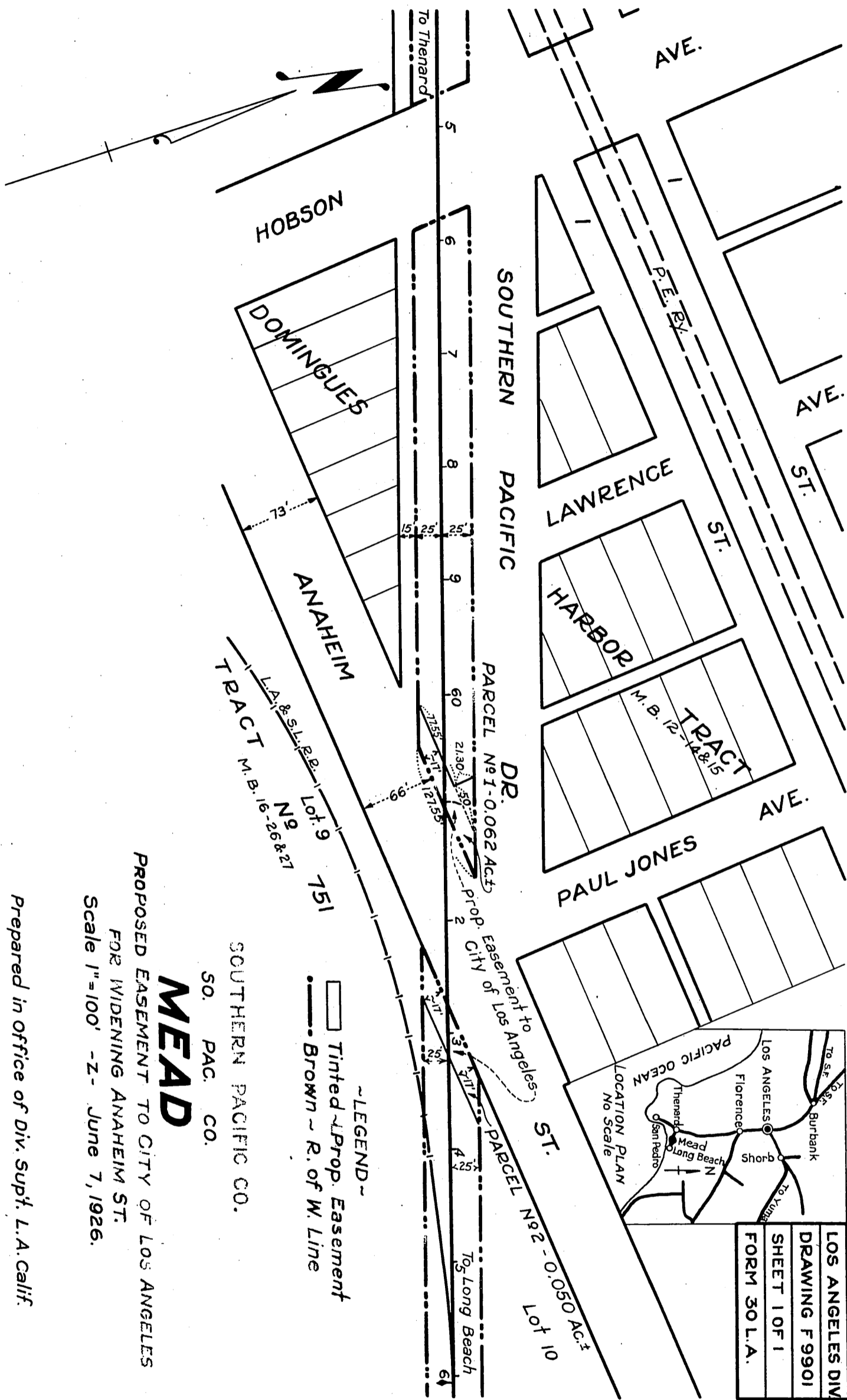


SOUTHERN PACIFIC RAILROAD COMPANY
TO
CITY OF LOS ANGELES

286

ORM 4753-286

28



MEAD

SOUTHERN PACIFIC CO.
SO. PAC. CO.

PROPOSED EASEMENT TO CITY OF LOS ANGELES
FOR WIDENING ANAHEIM ST.
Scale 1"=100' - Z - June 7, 1926.

Prepared in office of Div. Sup't. L.A. Calif.

Comp. I.C.
R.S.B.

A-533
A-500

Sh't * 28

D:57-140.

RECORDED FEB. 15, 1927.

O.R. 4753