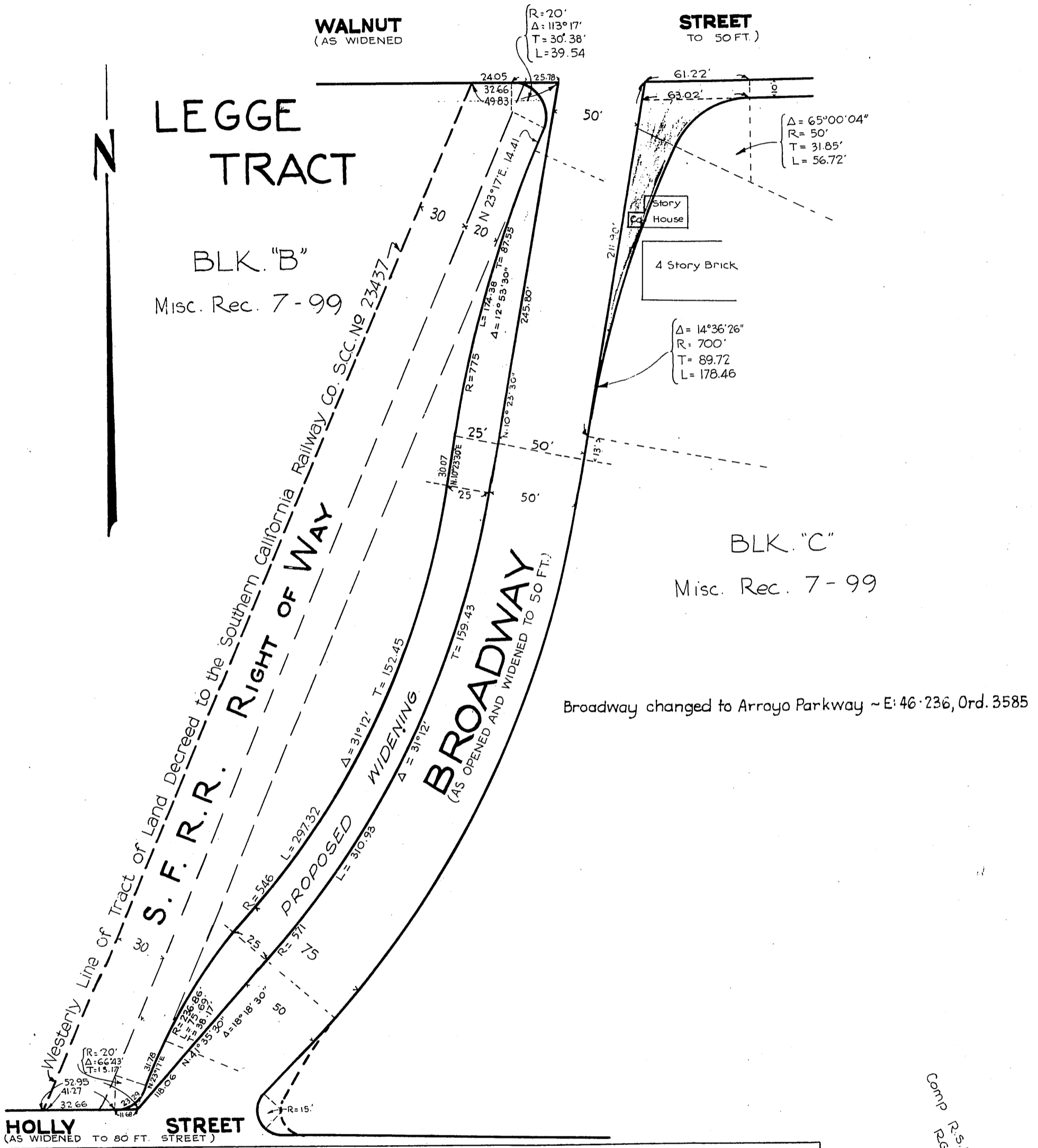


THE ATCHISON, TOPEKA AND SANTA FE RAILWAY COMPANY
TO
CITY OF PASADENA

113

ORM 4762-113

37



<p>DRAWN BY B. H. C. G. B. CHECKED BY <i>VE</i> FIELD BOOK See B199 <i>W.C. Earle</i> DEPUTY CITY ENGINEER APPROVED <i>W.C. Earle</i> CITY ENGR & SUPT OF STREETS</p>	<p>CITY OF PASADENA OFFICE OF CITY ENGINEER & SUPERINTENDENT OF STREETS PROPOSED WIDENING OF BROADWAY BETWEEN HOLLY ST. & WALNUT STREET IN THE CITY OF PASADENA</p>	<p>DATE MAY 1925 SCALE 1 IN = 60 FT. DRAWING NUMBER G-384</p>
---	--	--

Comp R.S.B.
R.G.L.

8

D:59-110.
RECORDED APRIL 19-1927

A-53
O.R. 4762