

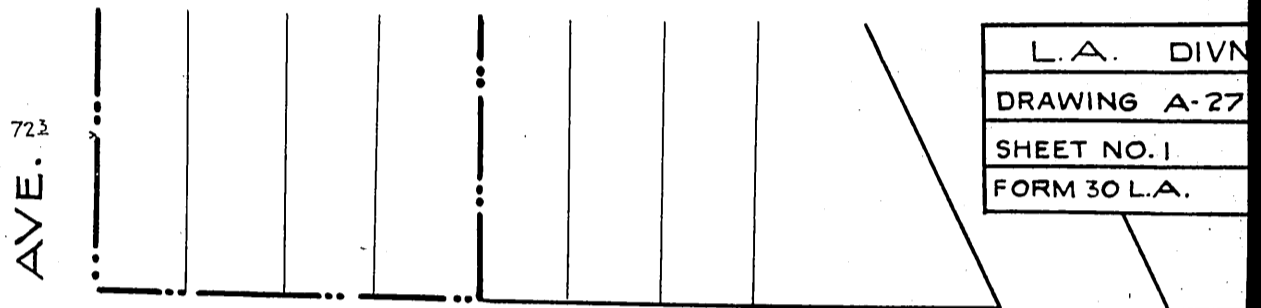
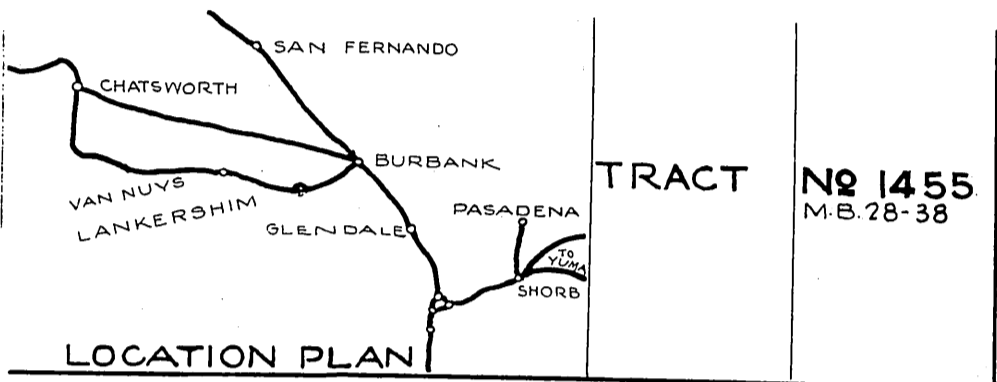
ORM 4791-234

46

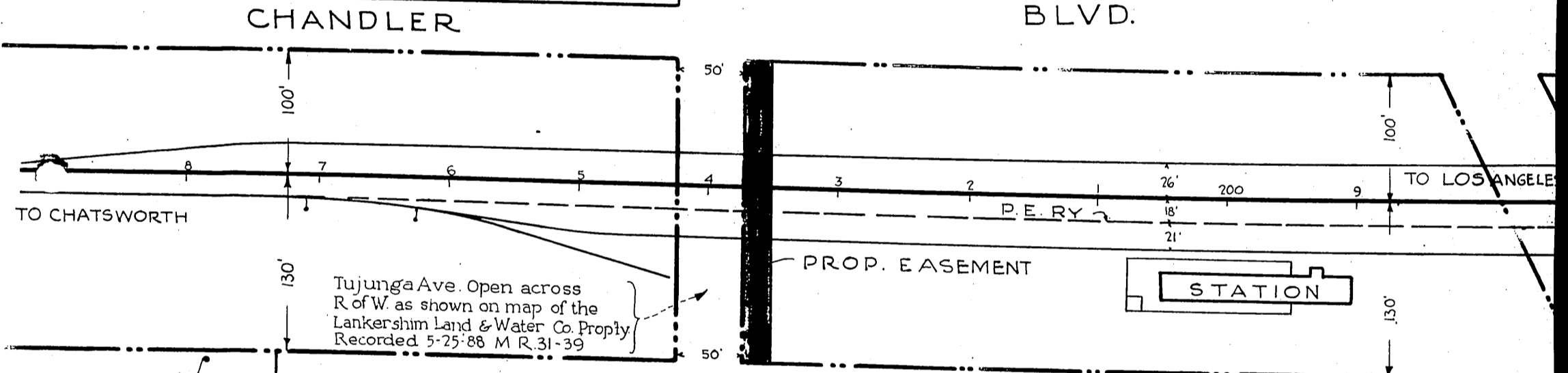
SOUTHERN PACIFIC COMPANY,  
SOUTHERN PACIFIC RAILROAD COMPANY

234

TO  
CITY OF LOS ANGELES

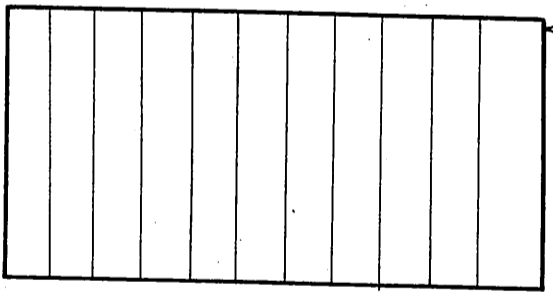


L.A. DIVN
DRAWING A-27
SHEET NO. 1
FORM 30 L.A.

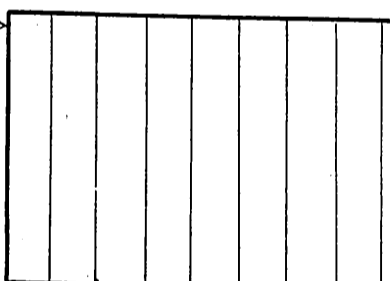




MARGATE

ST.



723  
TUJUNGA



- LEGEND -  
 Tinted - Prop. Easement  
 Brown - R of W. Line

SOUTHERN PACIFIC COMPANY  
 PACIFIC LINES  
**LANKERSHIM**

PROP. EASEMENT TO CITY OF L.A.  
 FOR WIDENING OF TUJUNGA AVE.  
 SCALE 1" = 100'      Z      NOV. 20, 1925

PREPARED IN OFFICE OF DIV. SUPT. - L.A. CALIF.  
 DRAWER

*Margate St. changed to Chandler Blvd. Ord. 60209*

A554

D:57-252.

RECORDED MAY 11-27

COMP. R.S.B.  
 R.G.L.

O.R. 4791