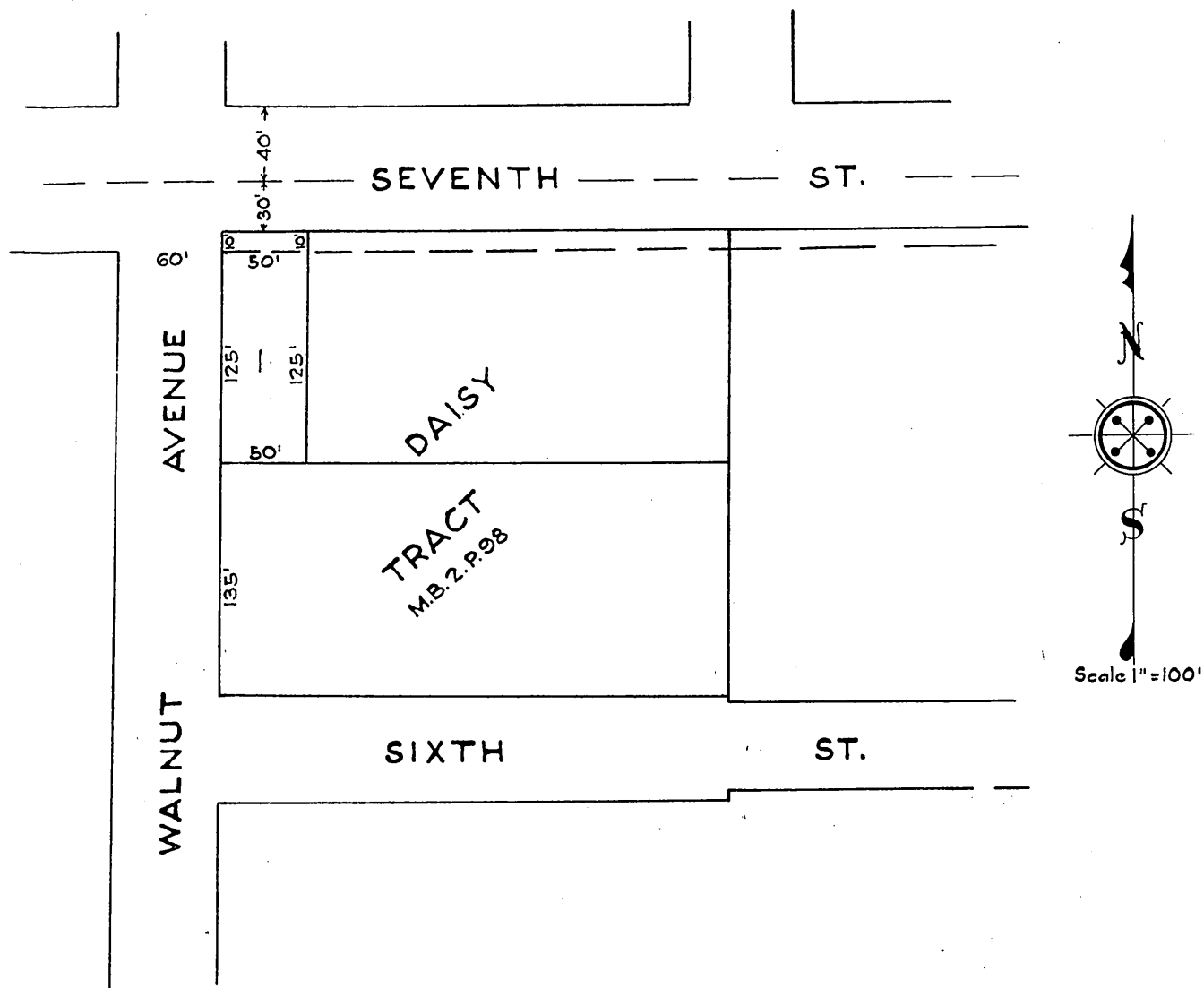


ORM 6676-240

81

TO
CITY OF LONG BEACH

Sketch showing portion of Lot 1
 DAISY TRACT
 Deeded to the City of Long Beach for
 street purposes.
 Red tint shows portion deeded.

G.N.
 Comp. R.S.B.

Sht. 30

D:59-207.

RECORDED JUNE 18, 1927.

A-133

O.R. 6676