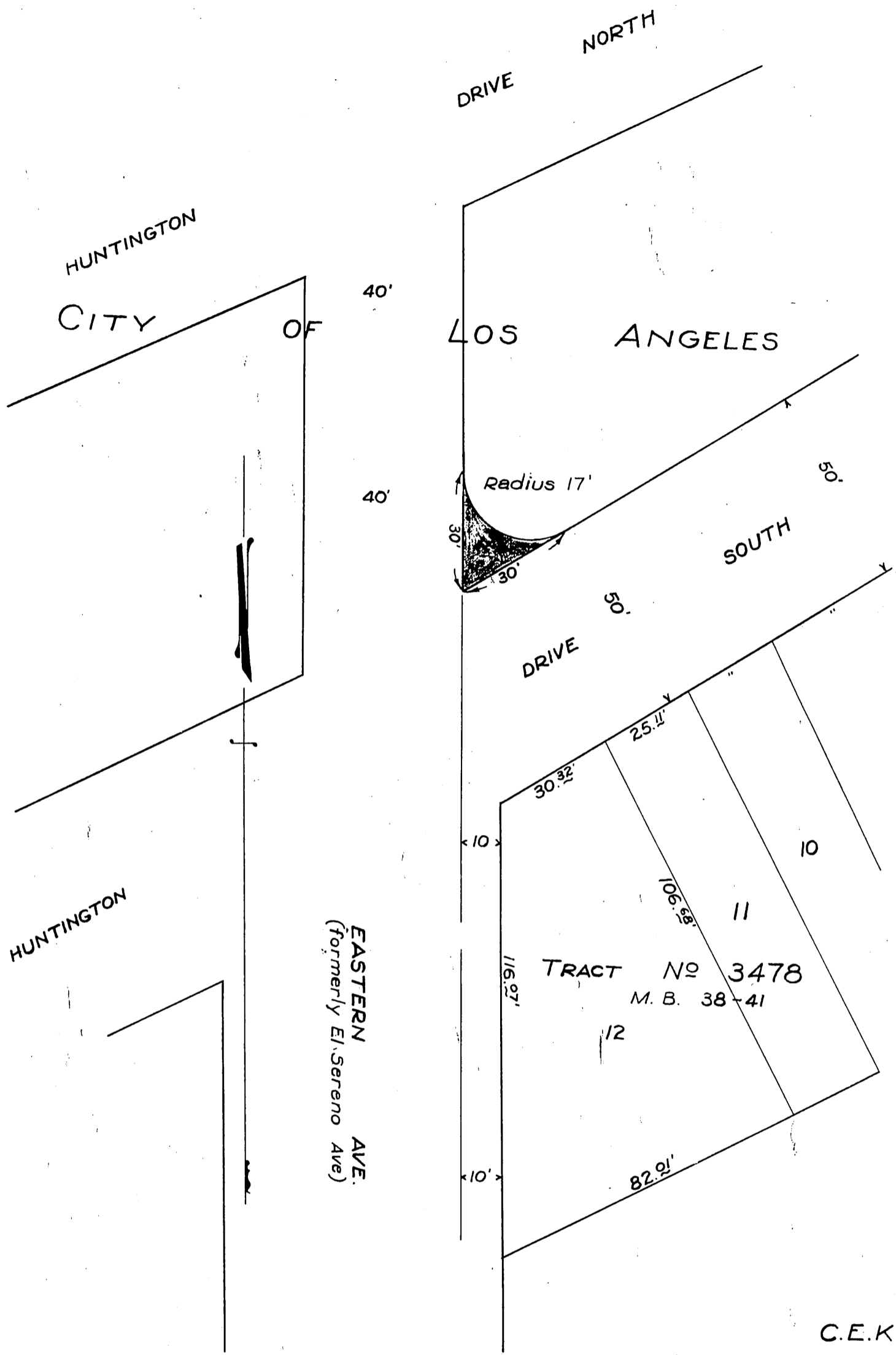


PACIFIC ELECTRIC RAILWAY COMPANY ORM-7187-175  
 TO  
 CITY OF LOS ANGELES 25



C.E.K. 1554

Scale:- 1" = 30'  
 Portion of Eastern Ave. vacated. - Ord. 65535

Comp. L.C.  
 C.S.

D:70-54

SHT.# 8  
 RECORDED OCT. 5, 1928.

O.R. 7187