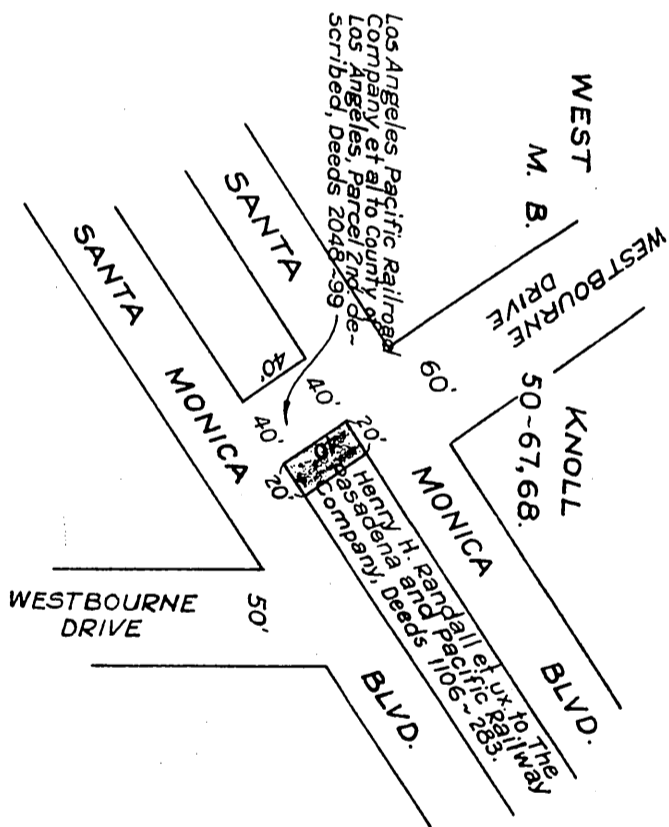
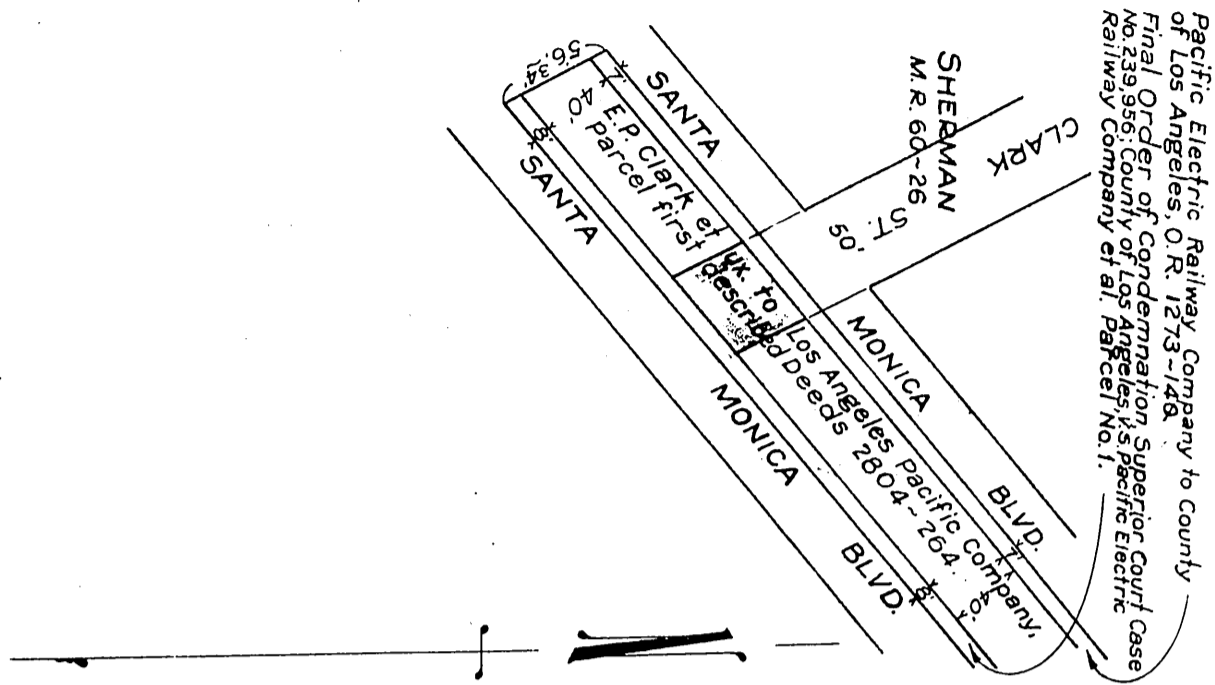


PACIFIC ELECTRIC RAILWAY COMPANY ORM-7188 - 374
 TO
 COUNTY OF LOS ANGELES 27



Scale: - 1" = 100'

C. E. K. 1527

Vacation por. Westbourne Drive - D:46-211.

Comp. H.D.H.
 L.C.

D:71-150
 Sht. 22

RECORDED SEPT. 11, 1928.

O.R. 7188