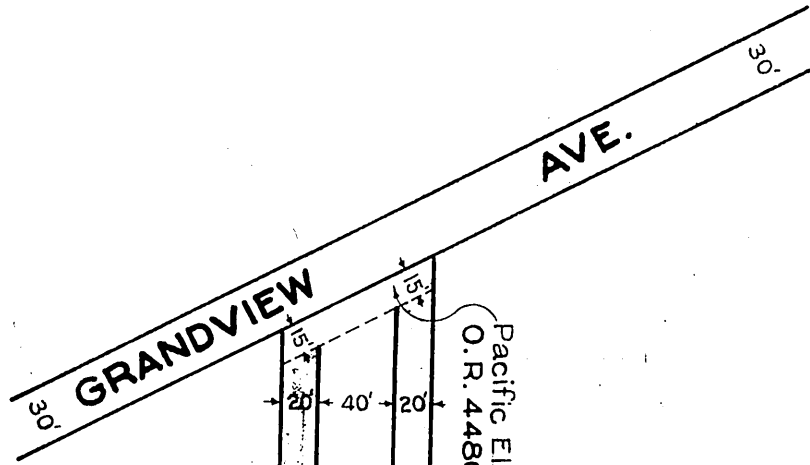


PACIFIC ELECTRIC RAILWAY COMPANY
TO
CITY OF GLENDALE

ORM-7189-375

28



Pacific Electric Ry. Company to City of Glendale
O.R. 4480-213.

CITY

OF

GLEN

Isabel R. de Tononi et al Pacific Electric Land Co.
Deeds 4341-138.

Lot 1 Block 8, Pelanconi Tract
M.B. 135-62, 63, 64.

Lot 1 Block 9, Pelanconi Tract
M.B. 135-62, 63, 64.

L.C.
Comp. C.S.

D:69-55

SEE PAGE NO. 376

RECORDED SEPT. 4, 1928.

O.R. 7189