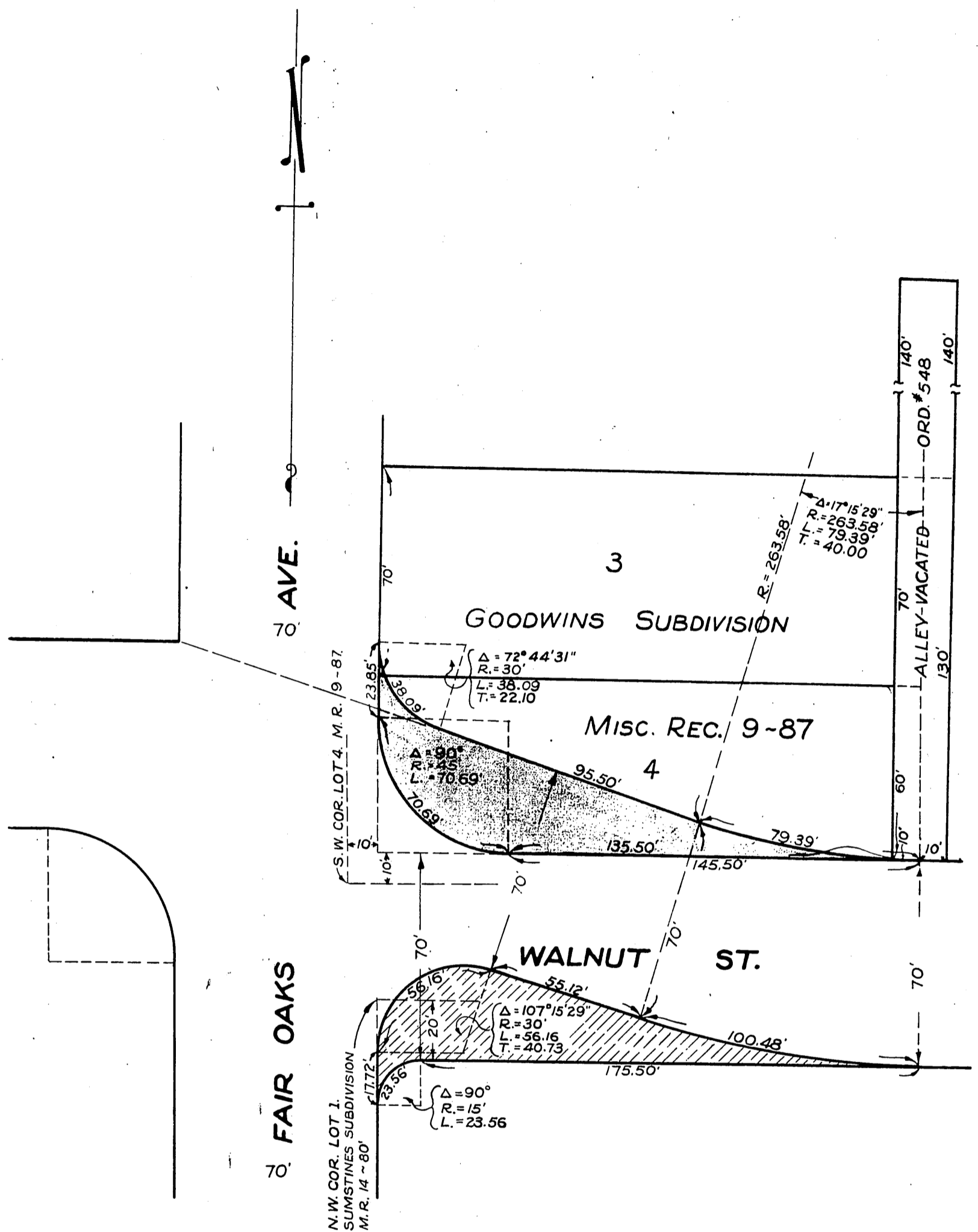


THE ROMAN CATHOLIC BISHOP OF
LOS ANGELES AND SAN DIEGO
TO
CITY OF PASADENA

ORM-7241 - 389
40



Note:-

Shaded portion shows land to be taken.

Cross hatching shows land to be vacated.

SCALE - 1 IN. = 40 FT.

Comp. L.C.
C.S.

Sht. #28

D:69-144

RECORDED NOV. 23, 1928.

O.R. 7241