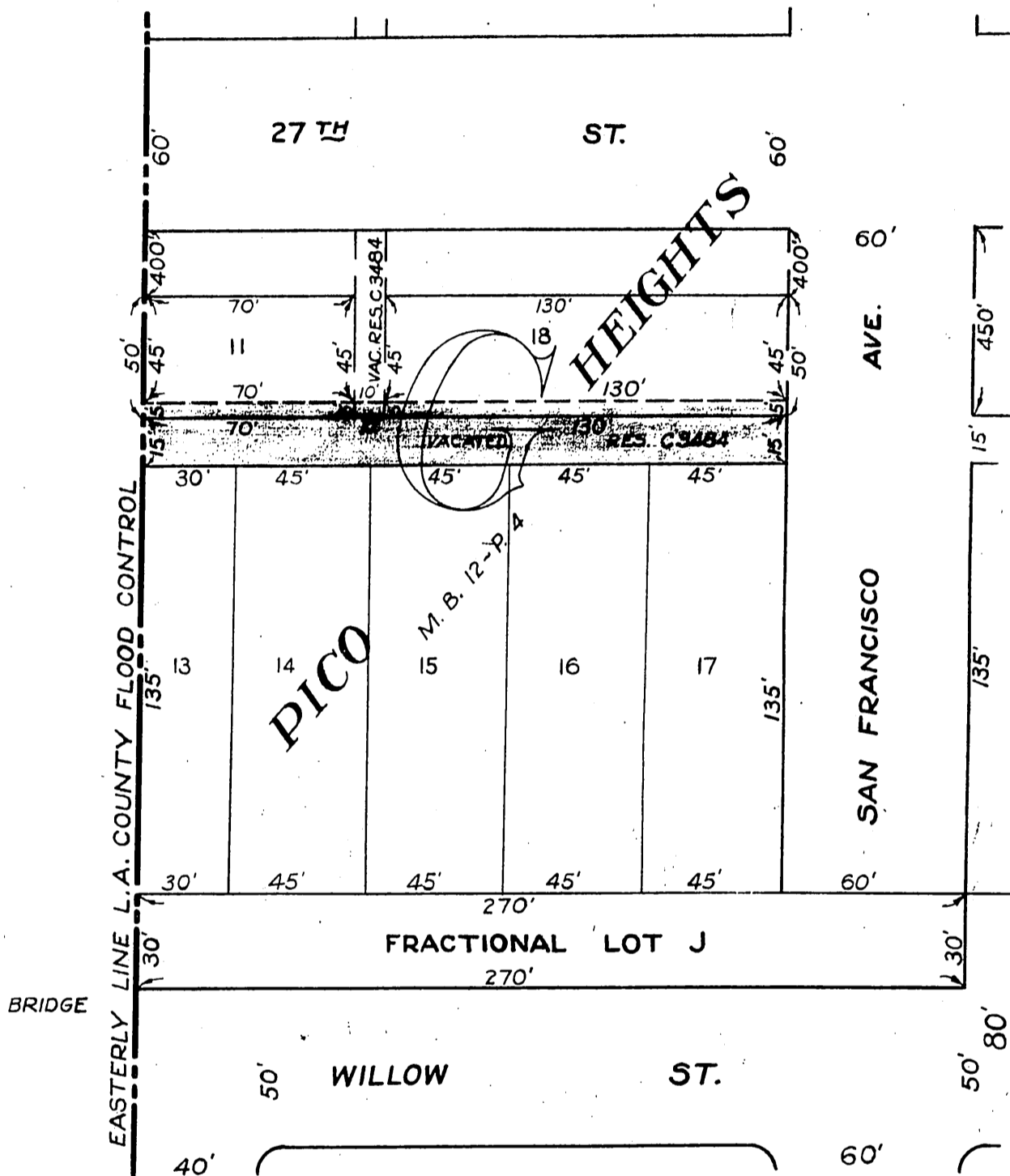


THE CALIFORNIA NATIONAL BANK OF LONG BEACH
TO
CITY OF LONG BEACH

ORM-7268-155
45



Scale 1"=50'

Comp. L.C.
H.D.H.

4-3/2
Sht. 30
D: 69-63.

RECORDED SEPT. 12, 1928.

O.R. 7268