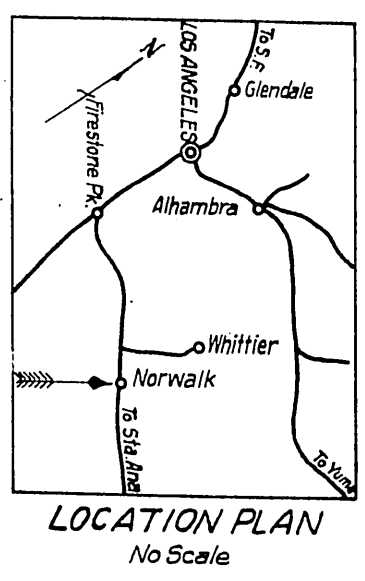
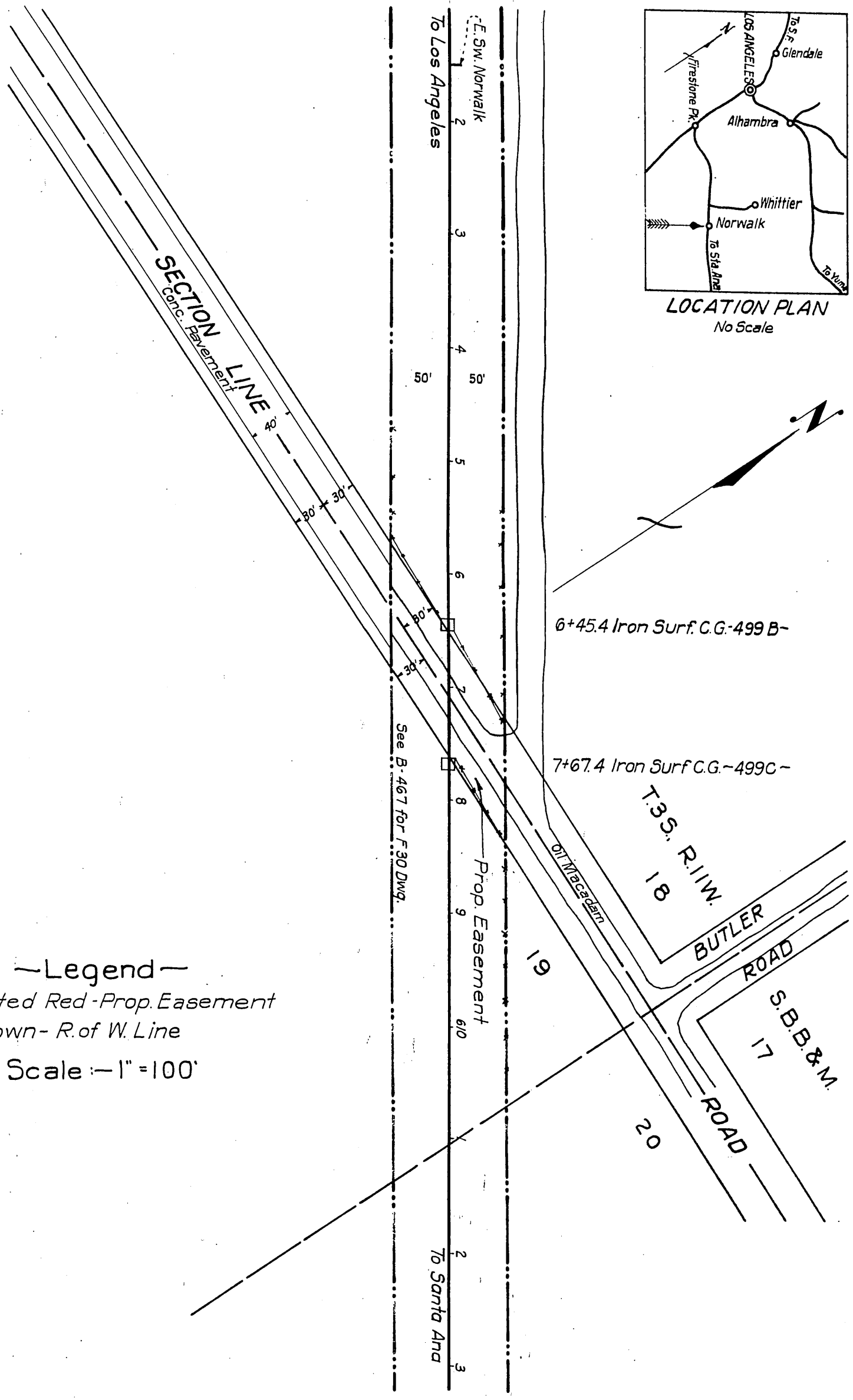


SOUTHERN PACIFIC RAILROAD COMPANY ORM-7274-267  
 TO  
 COUNTY OF LOS ANGELES 46



—Legend—  
 [Tinted Red Box] Tinted Red - Prop. Easement  
 [Brown Line] Brown - R. of W. Line  
 Scale: 1" = 100'

Section Line Rd. changed to Rosecrans Ave. D:49-105

D:68-264

Cont. 33 A-347

Comp. R.F.S.  
 C.S.

RECORDED OCT. 9, 1928

O.R. 7274