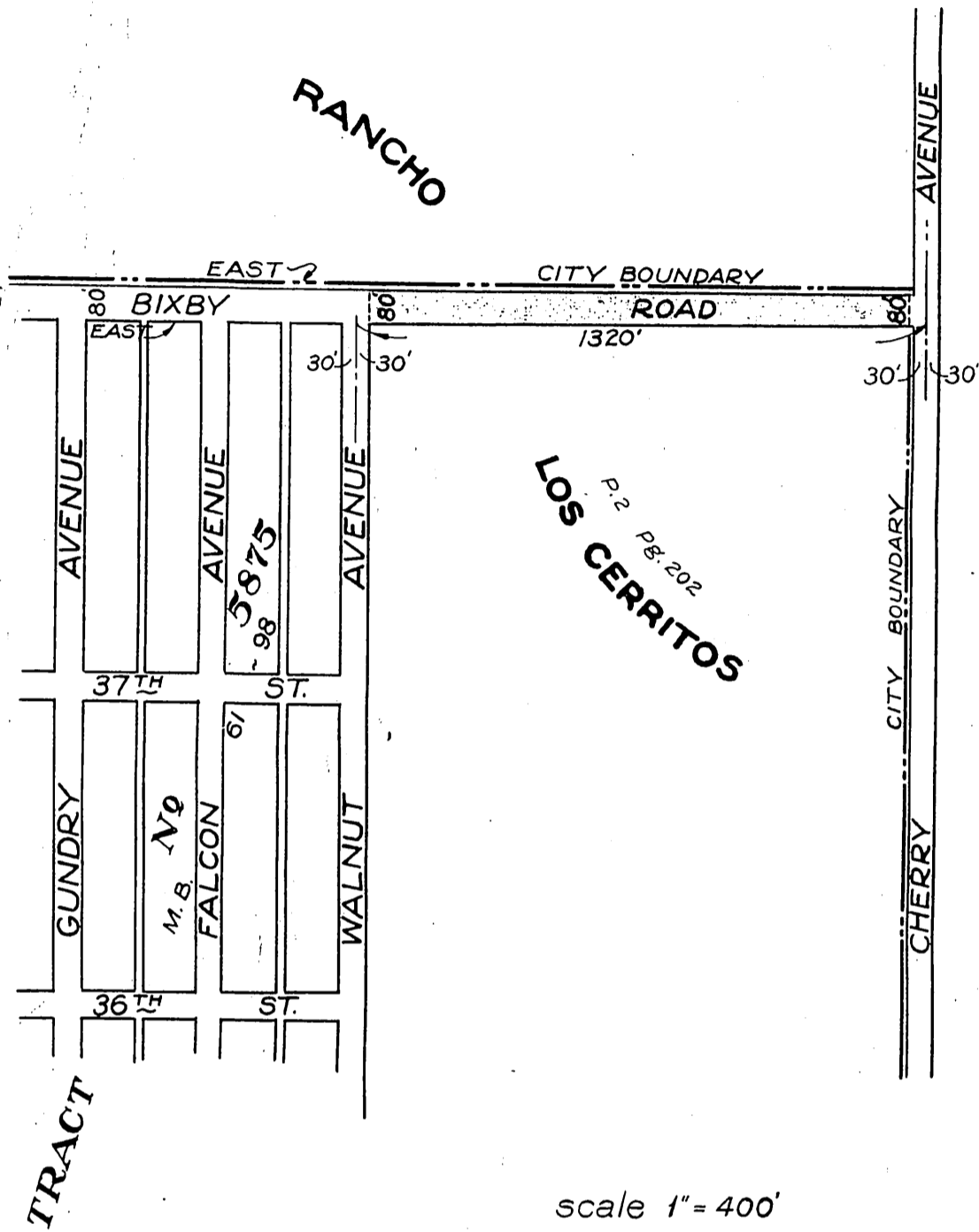


JOTHAM BIXBY COMPANY
TO
CITY OF LONG BEACH

ORM-7318

230

50



NOTE: THE OPENING OF BIXBY ROAD BETWEEN
WALNUT AVENUE AND CHERRY AVENUE.

Comp. L.C.
E.P.

A 457
Sht. 30
D: 69-145

RECORDED NOV. 21, 1928.

O. R. 7318