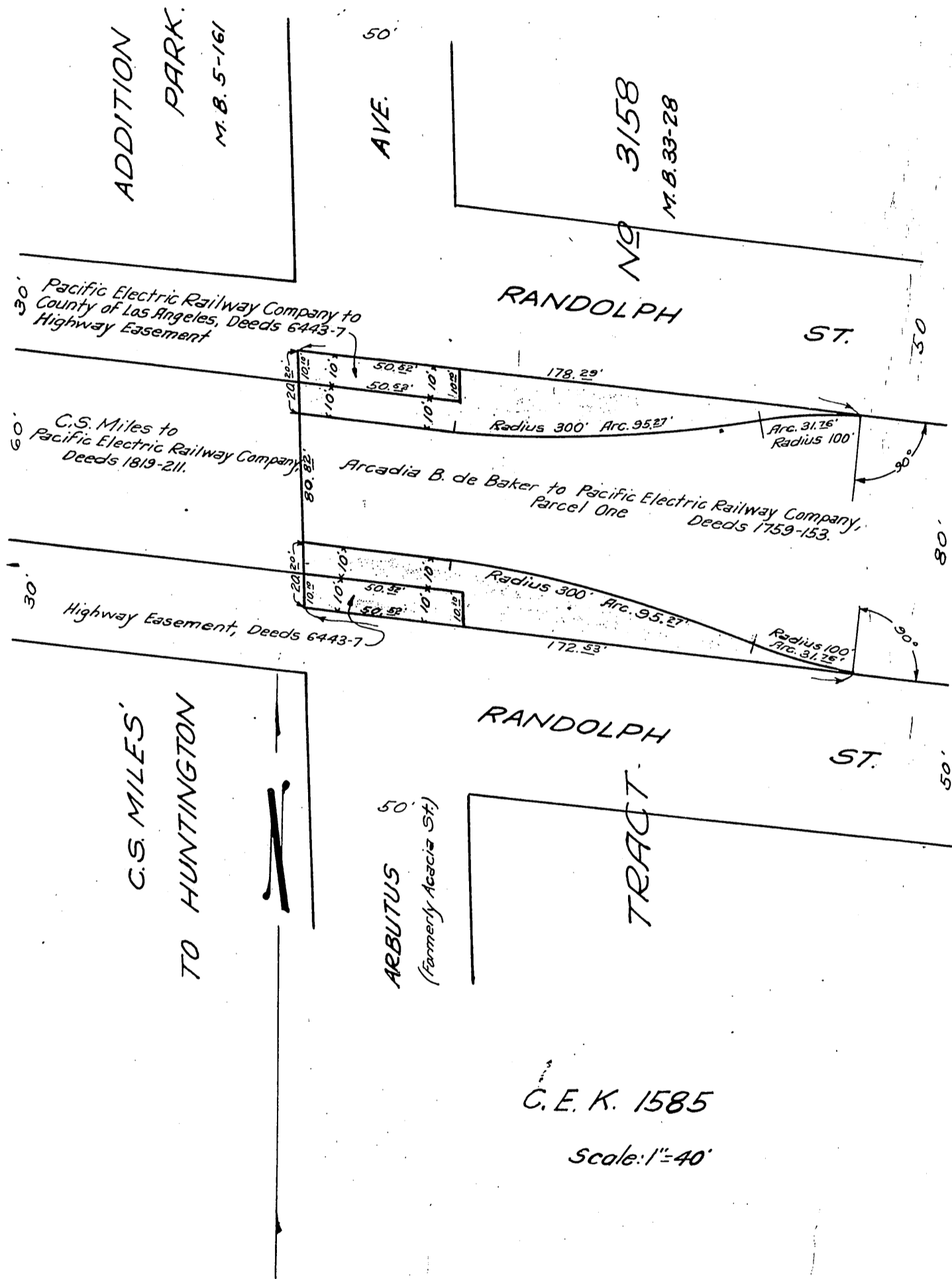


PACIFIC ELECTRIC RAILWAY COMPANY
TO
CITY OF HUNTINGTON PARK

ORM-7457-274

74

CITY OF HUNTINGTON PARK



Comp. C.S.
E.P.

A-703
Sht. 35-7
D: 72-102

RECORDED APRIL 9, 1929.

O.R. 7457