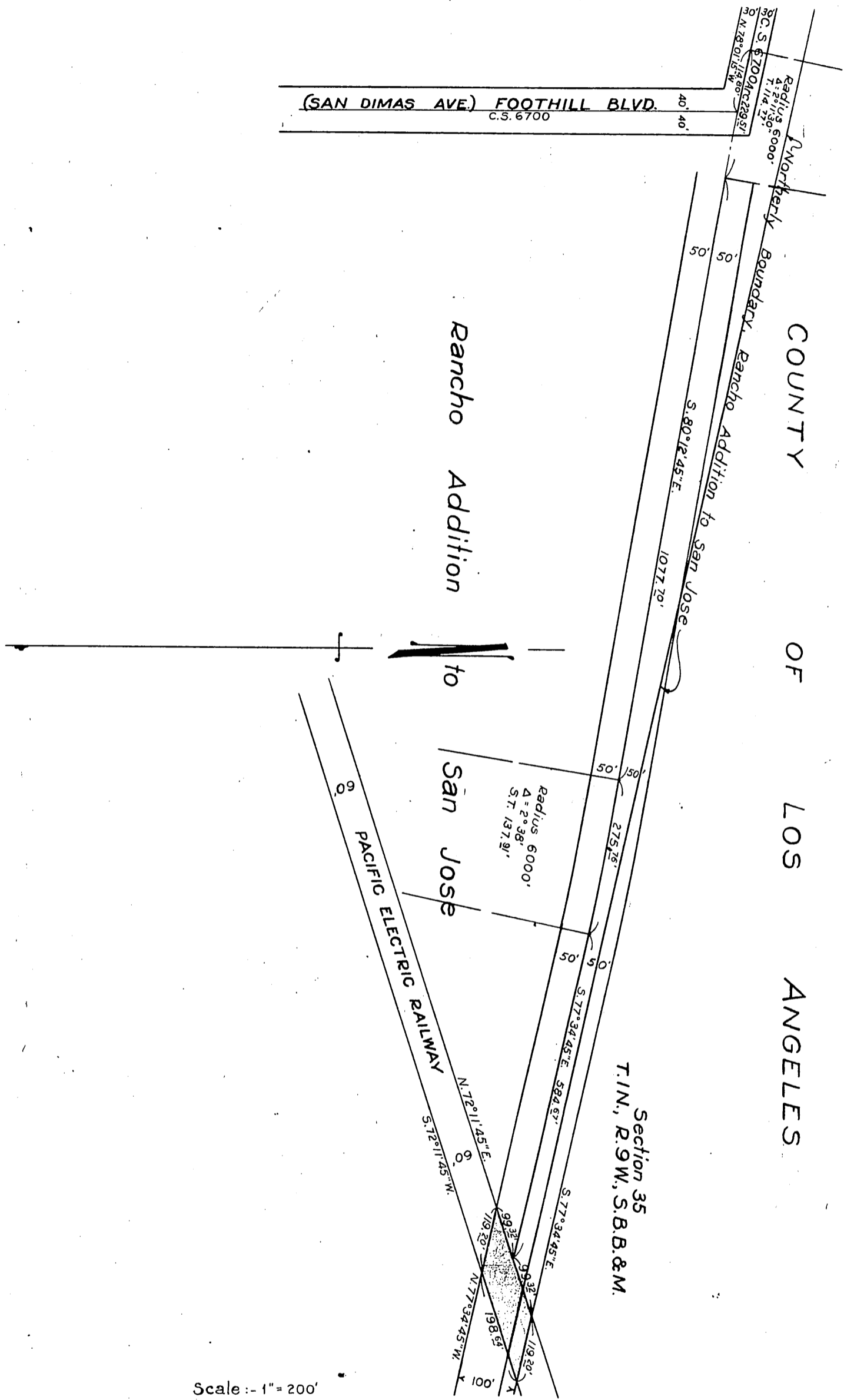


PACIFIC ELECTRIC RAILWAY COMPANY  
TO  
THE STATE OF CALIFORNIA

ORM-7485-50  
77



Scale :- 1" = 200'

Section 35  
T.1N., R.9W., S.B.B.&M.

C.E.K. 1573

Comp. L.C.  
C.S.

D:73-5 A.-339

5ht. 48

RECORDED FEB. 26, 1929.

O.R. 7485