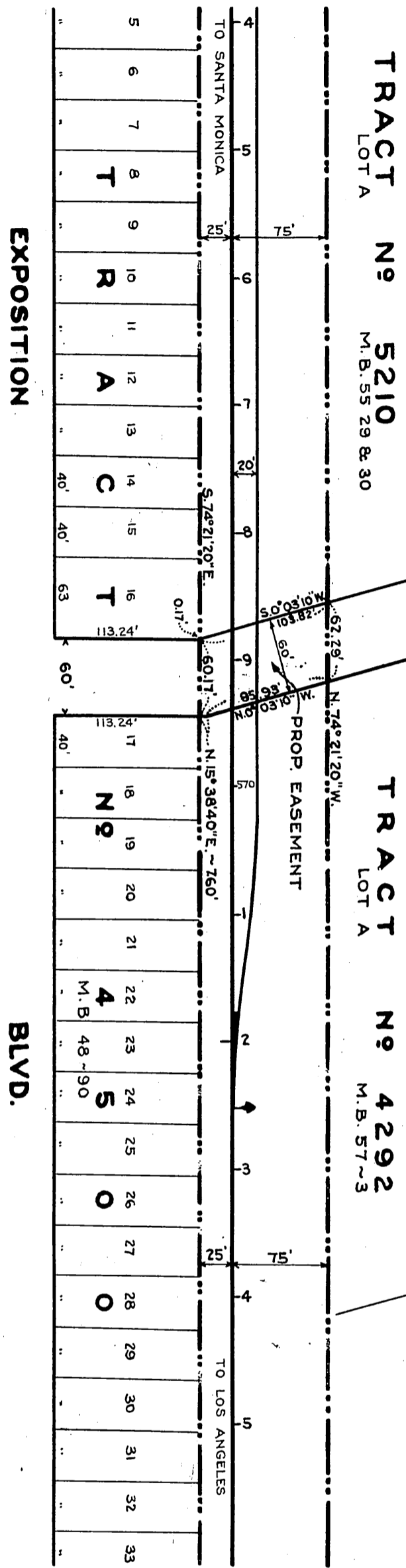
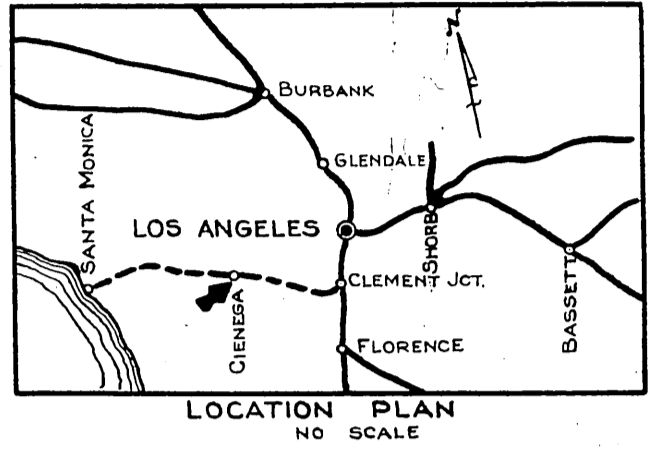


SOUTHERN PACIFIC RAILROAD COMPANY **ORM-7705-356**
 TO
 CITY OF LOS ANGELES

8011



SEVENTH

~ LEGEND ~
 TINTED ~ PROP. EASEMENT
 BROWN ~ R. OF W. LINE

SOUTHERN PACIFIC COMPANY.
 PACIFIC LINES
CIENEGA
 PROPOSED EASEMENT TO CITY OF LOS ANGELES
 FOR SEVENTH AVE. CROSSING
 SCALE 1"=100' Z JAN. 21, 1927.
 REV. 2-7-27.

Comp. I.C.
 R.S.B.

Sht. 5
 D: 65-2

RECORDED DEC. 29, 1927.

O.R. 7705.