

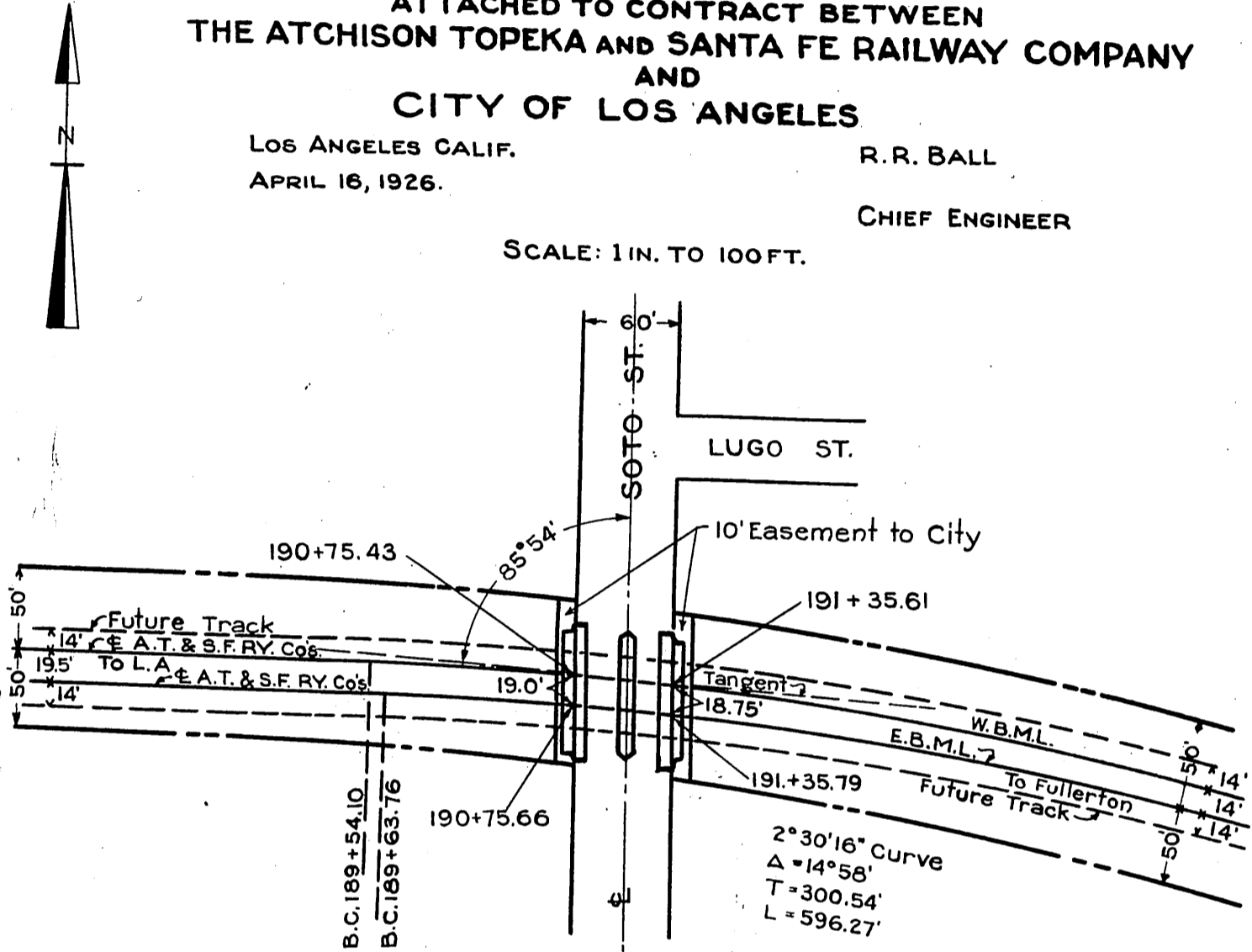
EXHIBIT "A"
 ATTACHED TO CONTRACT BETWEEN
 THE ATCHISON TOPEKA AND SANTA FE RAILWAY COMPANY
 AND
 CITY OF LOS ANGELES

LOS ANGELES CALIF.
 APRIL 16, 1926.

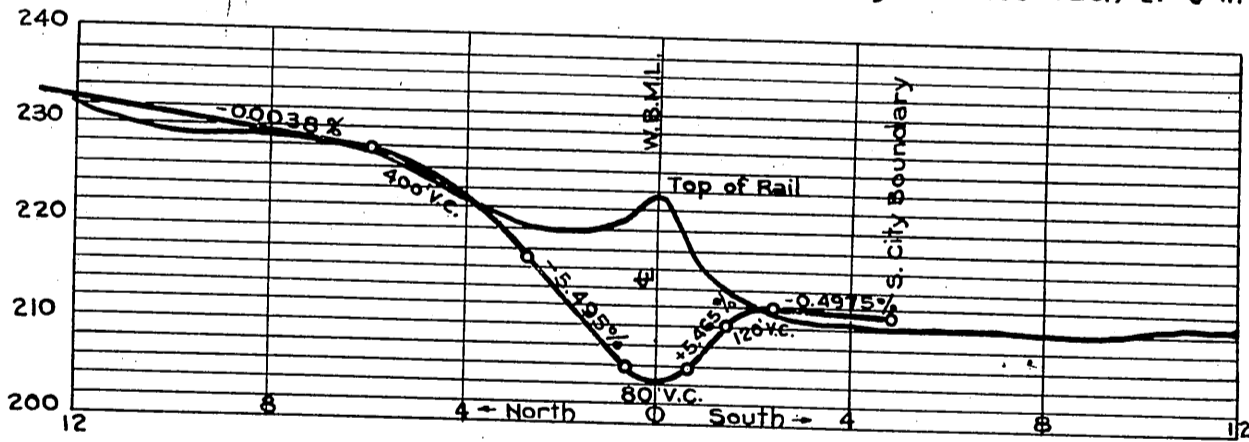
R.R. BALL

CHIEF ENGINEER

SCALE: 1 IN. TO 100 FT.



2 Span 26' I-Beams for Two Tracks on
 Concrete Pier and Abutments for Four Tracks
 Minimum overhead Clearance 14'-0" Clear
 Roadway - 2 Lanes each 21'-0" in the clear.



76-17402.

Sht. 4

Comp. L.C.
 R.S.B.

D: 61-197 C.S. 8029
 RECORDED SEPT. 28, 1927.

A-15

O.R. 7717