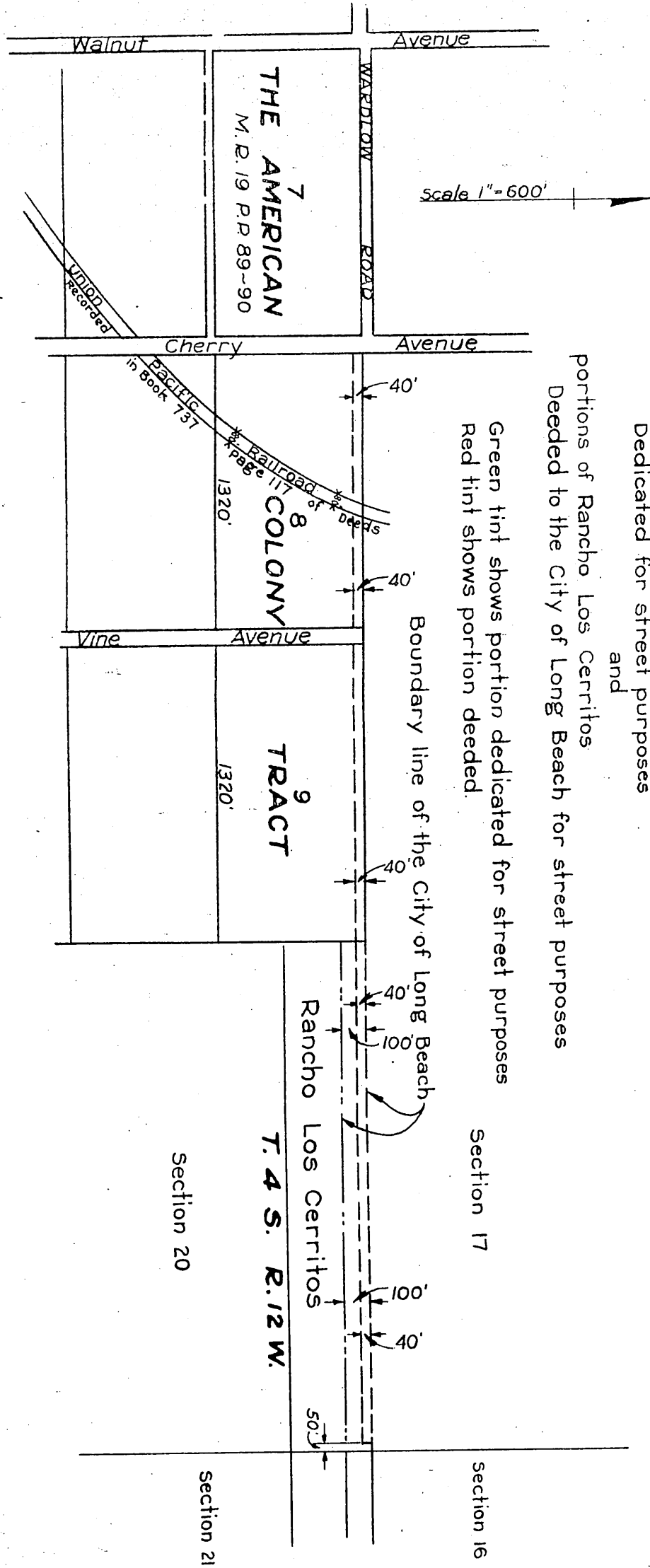


MONTANA LAND COMPANY
TO
CITY OF LONG BEACH

ORM 7746-84



Sketch showing portions of Lots 8 and 9 The American Colony Tract.
Dedicated for street purposes
and
portions of Rancho Los Cerritos
Dedeed to the City of Long Beach for street purposes

Green tint shows portion dedicated for street purposes
Red tint shows portion dedeed.

L.C.
Comp. R.S.B.

D:77-208

OR-7746

A-55
Sht. 30
D: 62-78

RECORDED NOV. 2, 1927.