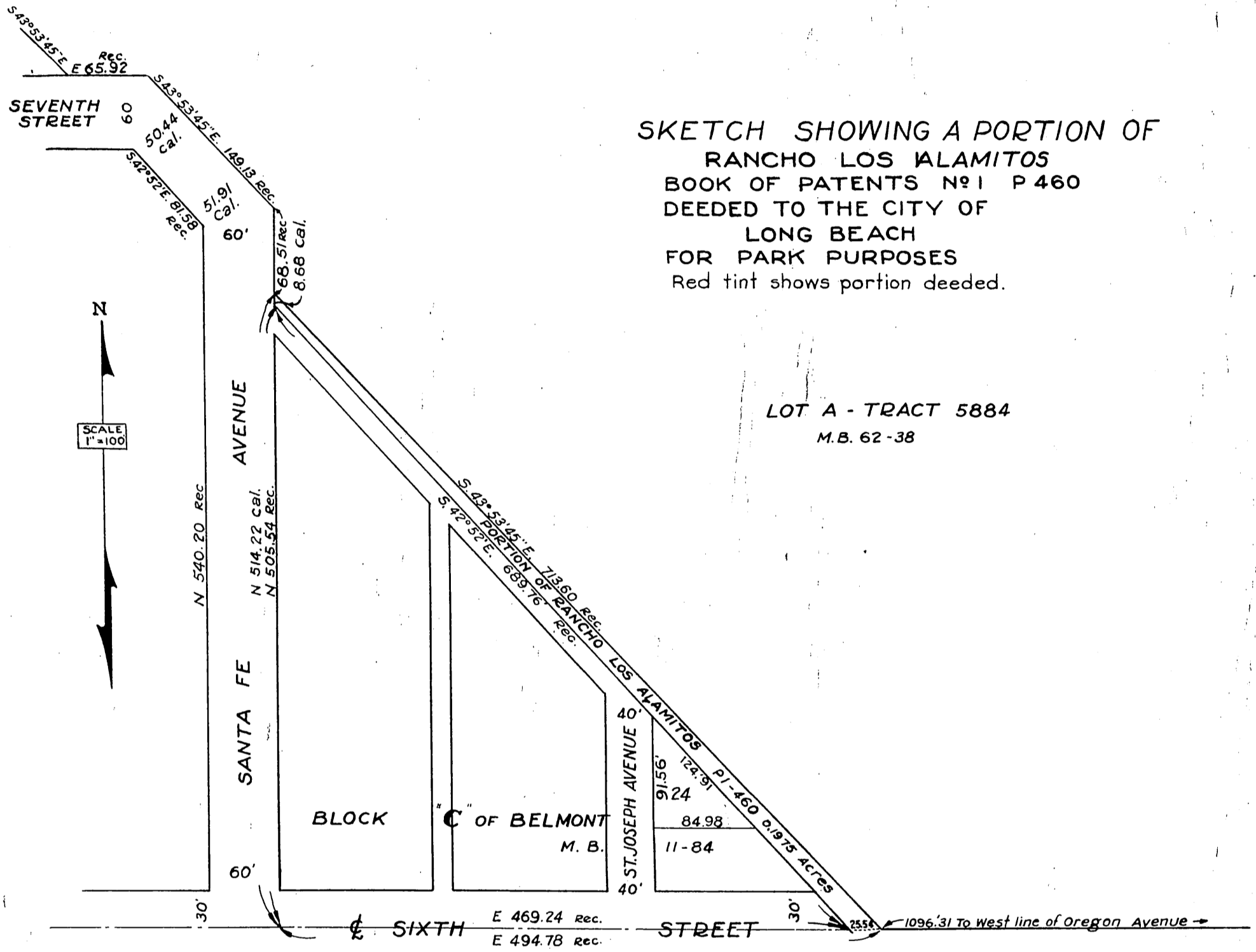


THE ALAMITOS LAND COMPANY
TO
CITY OF LONG BEACH

ORM-7778-15
11



SKETCH SHOWING A PORTION OF
RANCHO LOS ALAMITOS
BOOK OF PATENTS N°1 P 460
DEEDED TO THE CITY OF
LONG BEACH
FOR PARK PURPOSES
Red tint shows portion deeded.

Comp. I.C.
R.S.B.

Sht 31
D: 62-91

RECORDED NOV. 12. 1927.

O.R. 7778