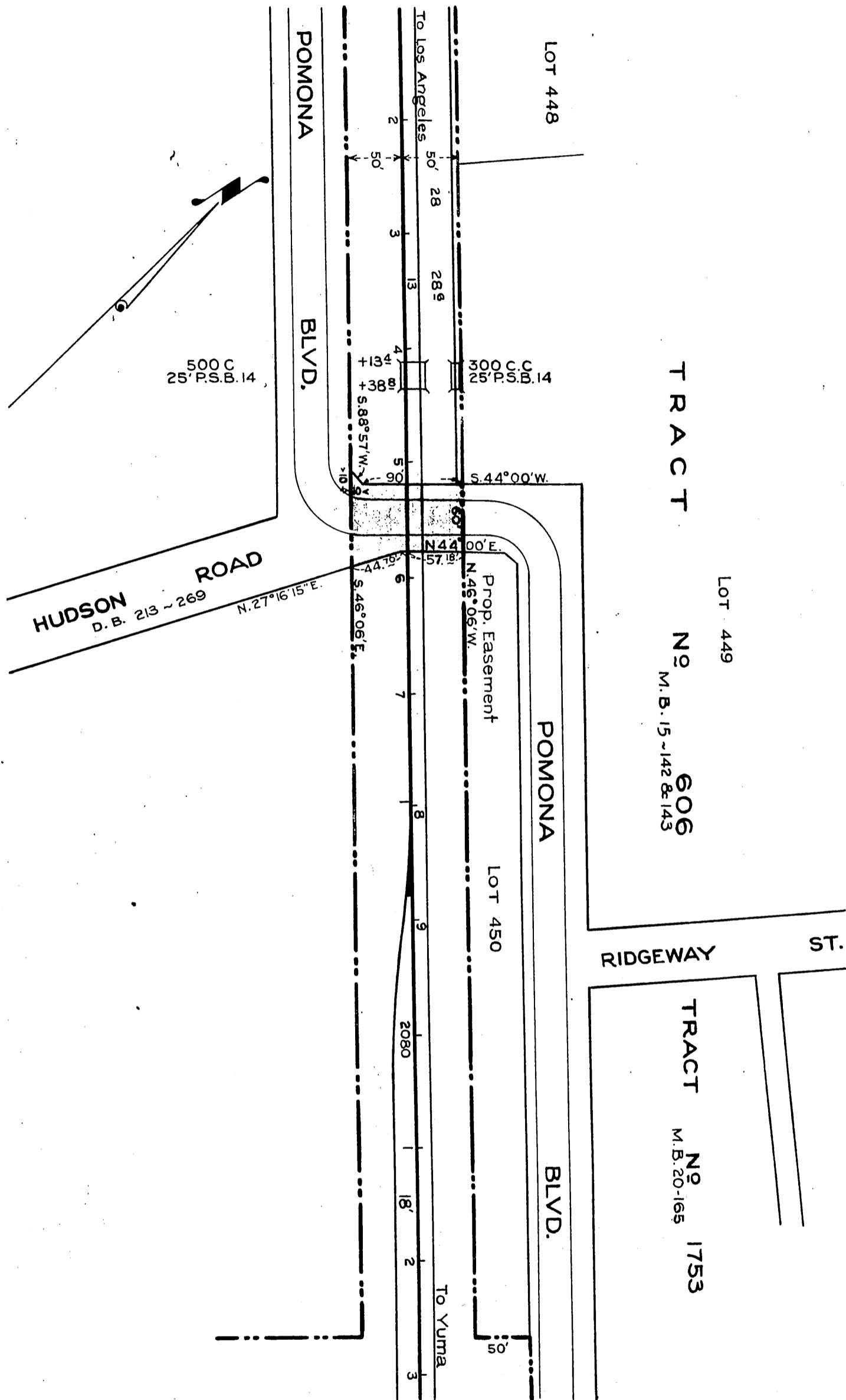


SOUTHERN PACIFIC RAILROAD COMPANY ORM-9267-243
 TO
 COUNTY OF LOS ANGELES

47



~ LEGEND ~
 [Tinted Red] Tinted Red ~ Easement Proposed
 [Brown Line] Brown ~ Right of Way Line.

Scale: 1" = 100' Por. Pomona Blvd. chg. to Valley Blvd. E:49-25.

Comp. C. I. C.

D: 76-7
 Sht. 38 A-114

RECORDED JULY 1, 1928.

O. R. 9267