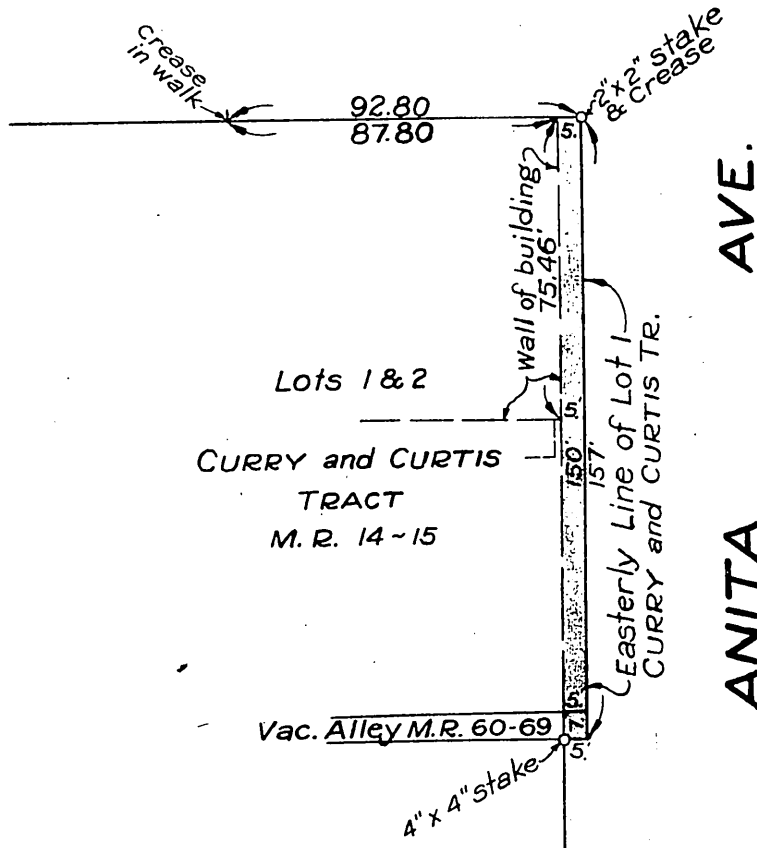


CECIL L. BREWER ET UX.
TO
CITY OF PASADENA

ORM 9312-25.1 25
49
A-396

COLORADO ST.



MOHAWK ST.

NOTE:
SHADED PORTION SHOWS
LAND COVERED BY EASEMENT.

Scale 1" = 50'

Comp. L.C.
C.S.

A-396
Sht. 44
D-72-283
RECORDED AUG. 9, 1929.

O.R. 9312