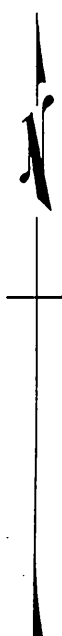
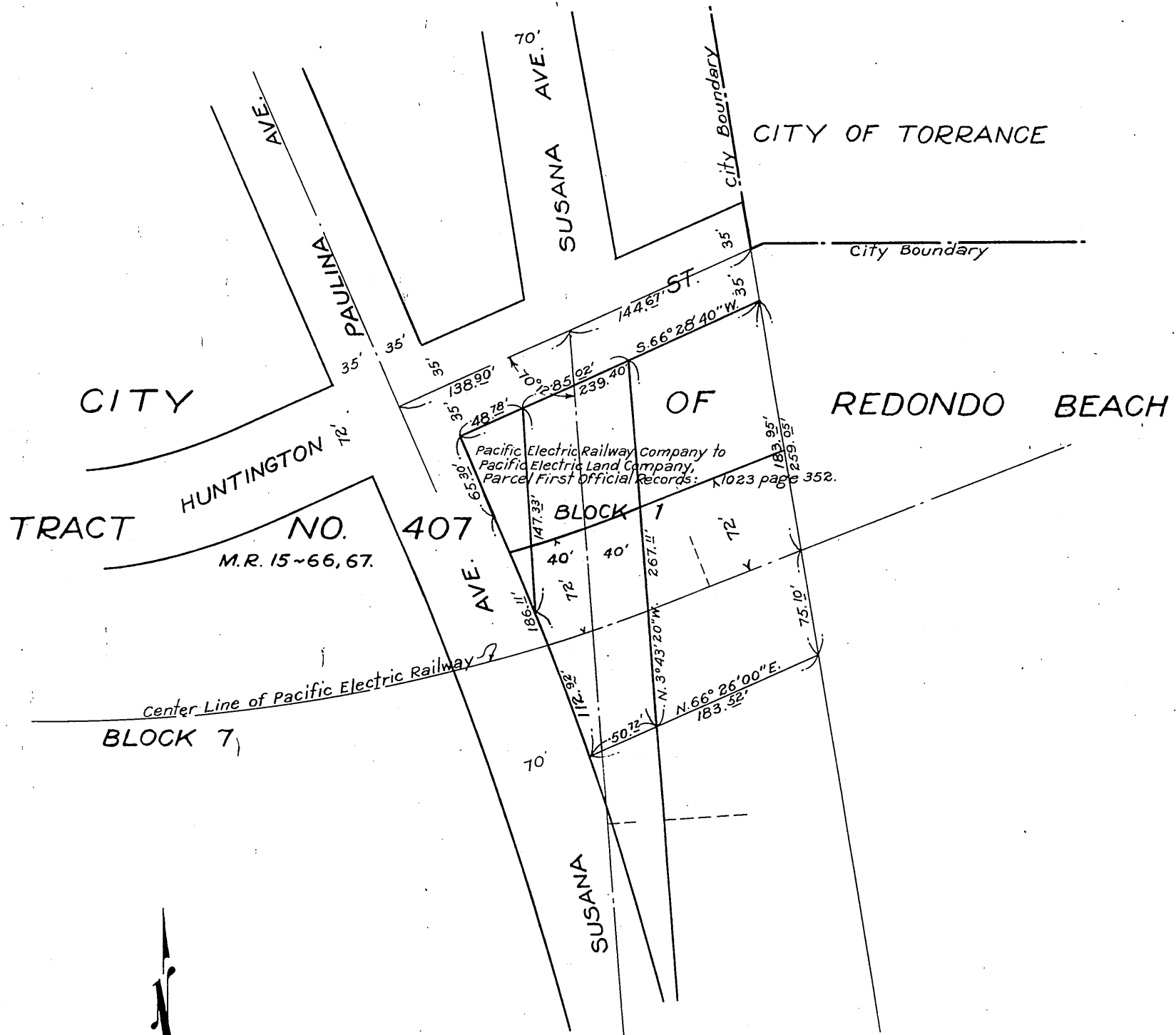


PACIFIC ELECTRIC RAILWAY COMPANY
TO
CITY OF REDONDO BEACH

334

OR 11297-334

41



SCALE: 1" = 100'

C.E.K. 1779

For. Susana Ave., vacated. D:21-164 Ord. 782

Comp. L.C.

D:21-137
Sht. 25

RECORDED JAN. 8, 1932.

O.R. 11297