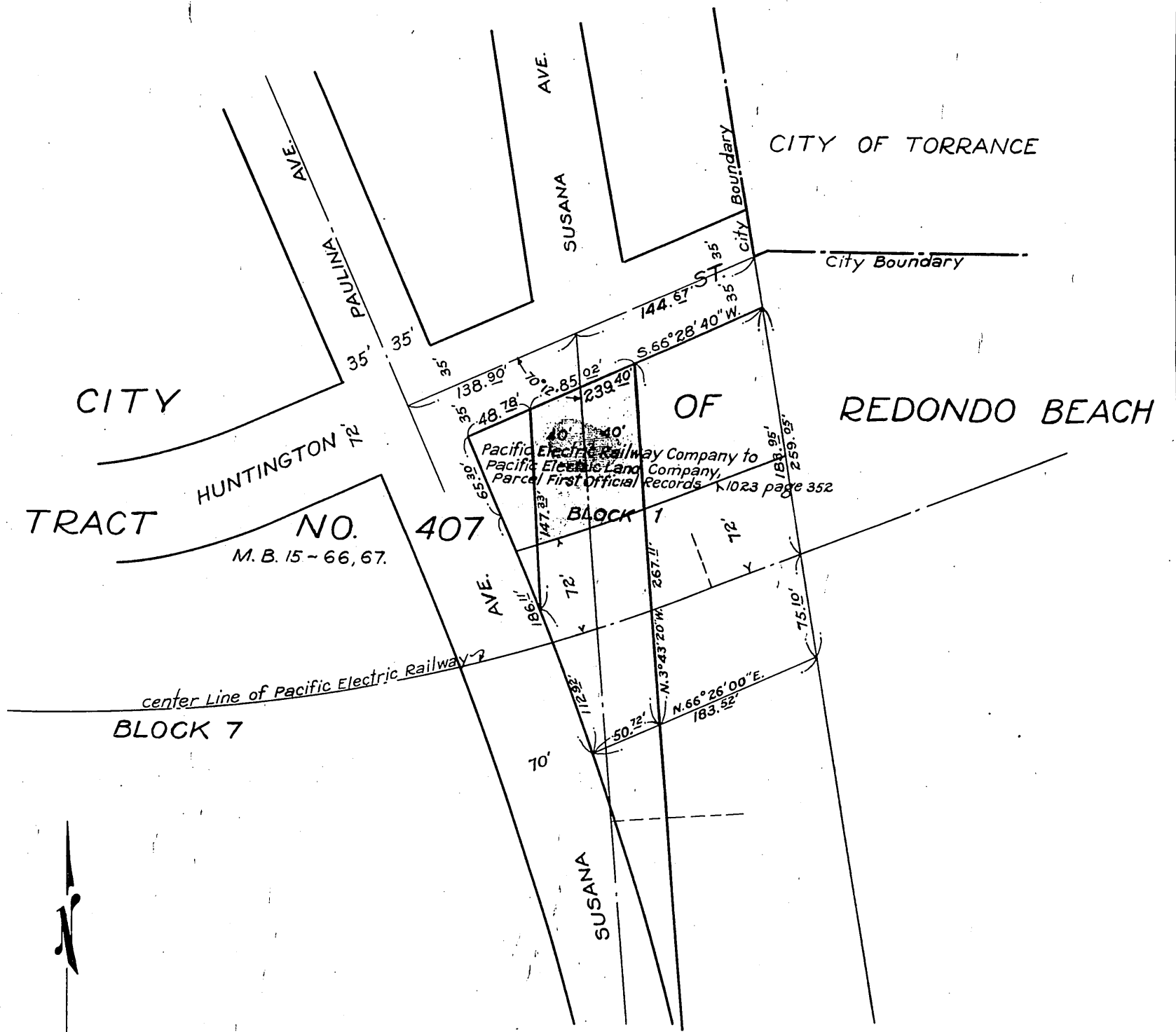


PACIFIC ELECTRIC LAND COMPANY
TO
CITY OF REDONDO BEACH

ORM 11363-109

45



SCALE: 1" = 100'

C.E.K. 1779~a

Por. Susana Ave. vacated. D: 21-164 Ord. 782.

Comp. L.C.

D: 21-136
Sht. 25

RECORDED JAN. 8, 1932.

O.R. 11363