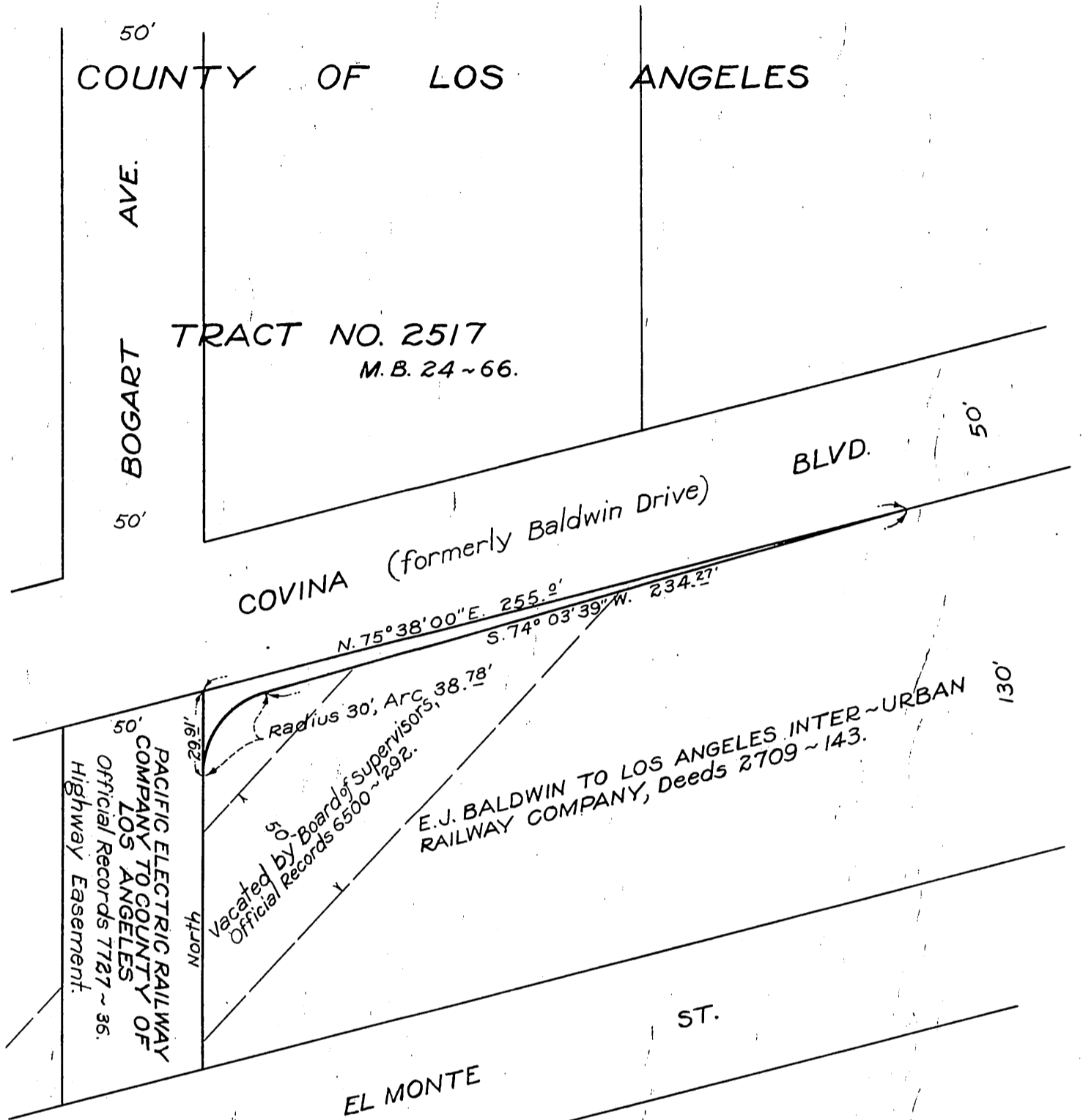


TO  
COUNTY OF LOS ANGELES

ORM 11398-83

46



PACIFIC ELECTRIC RAILWAY  
COMPANY TO COUNTY OF  
LOS ANGELES  
Official Records 7727 ~ 36.  
Highway Easement.

Radius 30', Arc 38.78'  
Vacated by Board of Supervisors,  
Official Records 6500 ~ 292.

E.J. BALDWIN TO LOS ANGELES INTER-URBAN  
RAILWAY COMPANY, Deeds 2709 ~ 143.



C.E.K. 1796

SCALE: 1" = 50'

Covina Blvd. changed to San Bernardino Rd. D: 49-218  
San Bernardino Rd. " " E. Ramona Blvd. D: 49-222

Comp. L.C.

Sht. 46  
D: 23-225

RECORDED JAN. 22, 1932.

O.R. 11398