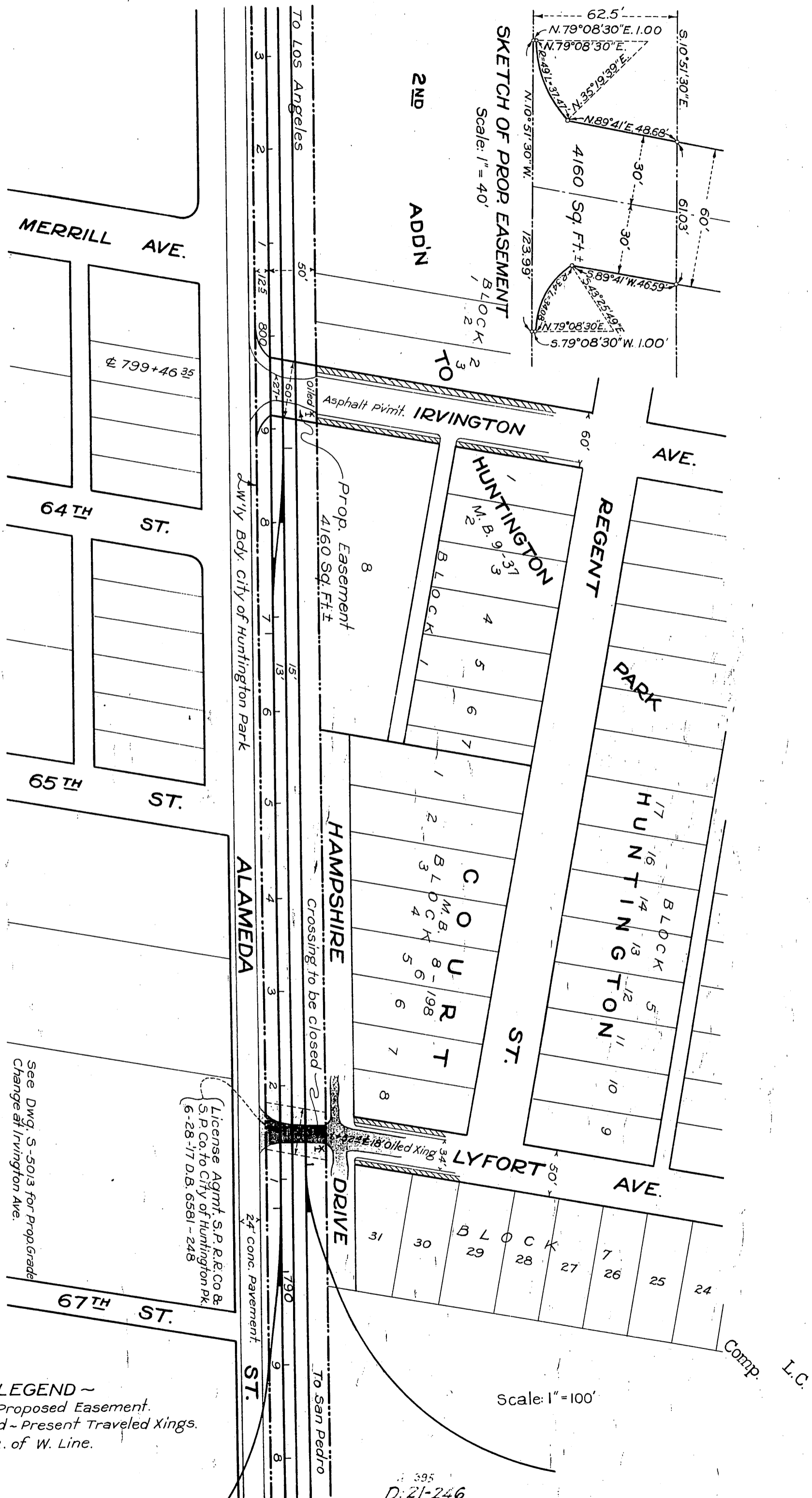


SOUTHERN PACIFIC RAILROAD COMPANY
TO
CITY OF HUNTINGTON PARK

342

ORM 11515-342

52



~ LEGEND ~
 [Shaded Box] Tipt ~ Proposed Easement.
 [Dashed Box] Shaded ~ Present Traveled Kings.
 [Dotted Line] R. of W. Line.

License Agmt. S.P.R.C. & S.P.Co. to City of Huntington Park
 6-28-'17 D.B. 6581 - 248

RECORDED MAY 6, 1932.

O.R. 11515

395
 D: 21-246
 Sht. 35