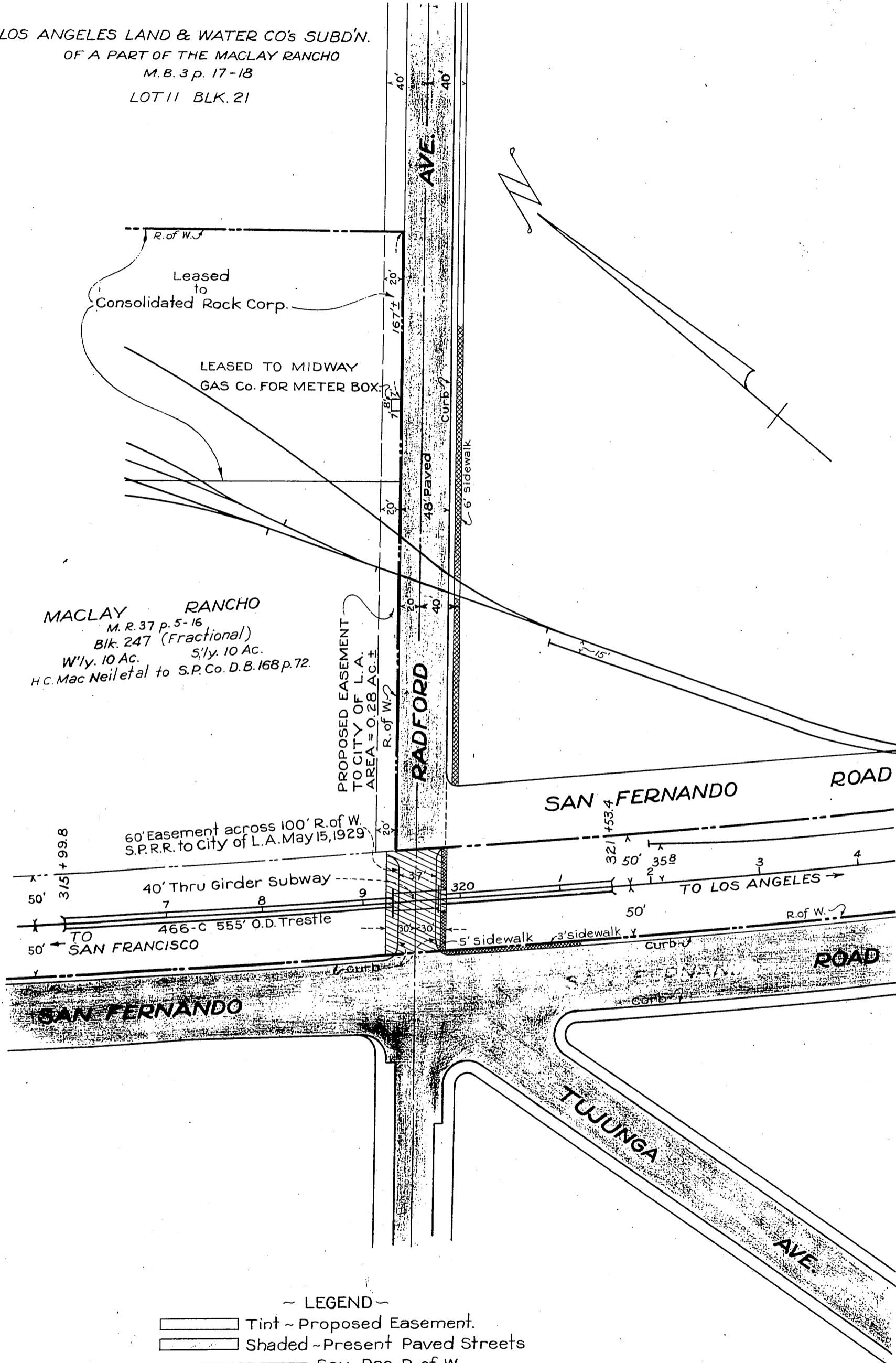


TO
CITY OF LOS ANGELES

ORM 11561-358

53

LOS ANGELES LAND & WATER CO'S SUBD'N.
OF A PART OF THE MACLAY RANCHO
M.B. 3 p. 17-18
LOT 11 BLK. 21



MACLAY RANCHO
M.R. 37 p. 5-16
Blk. 247 (Fractional)
W'y. 10 Ac. S'y. 10 Ac.
H.C. Mac Neil et al to S.P. Co. D.B. 168 p. 72

Leased to Consolidated Rock Corp.
LEASED TO MIDWAY GAS Co. FOR METER BOX.

PROPOSED EASEMENT TO CITY OF L.A.
AREA = 0.28 AC. ±

60' Easement across 100' R. of W. S.P.R.R. to City of L.A. May 15, 1929
40' Thru Girder Subway
466-c 555' O.D. Trestle
TO SAN FRANCISCO

- ~ LEGEND ~
- Tint ~ Proposed Easement.
 - Shaded ~ Present Paved Streets
 - Sou. Pac. R. of W.

Scale: 1" = 100'
D: 86-167.
Sht. 53

RECORDED JUNE 1, 1932.

O.R. 11561

Comp. L.C.