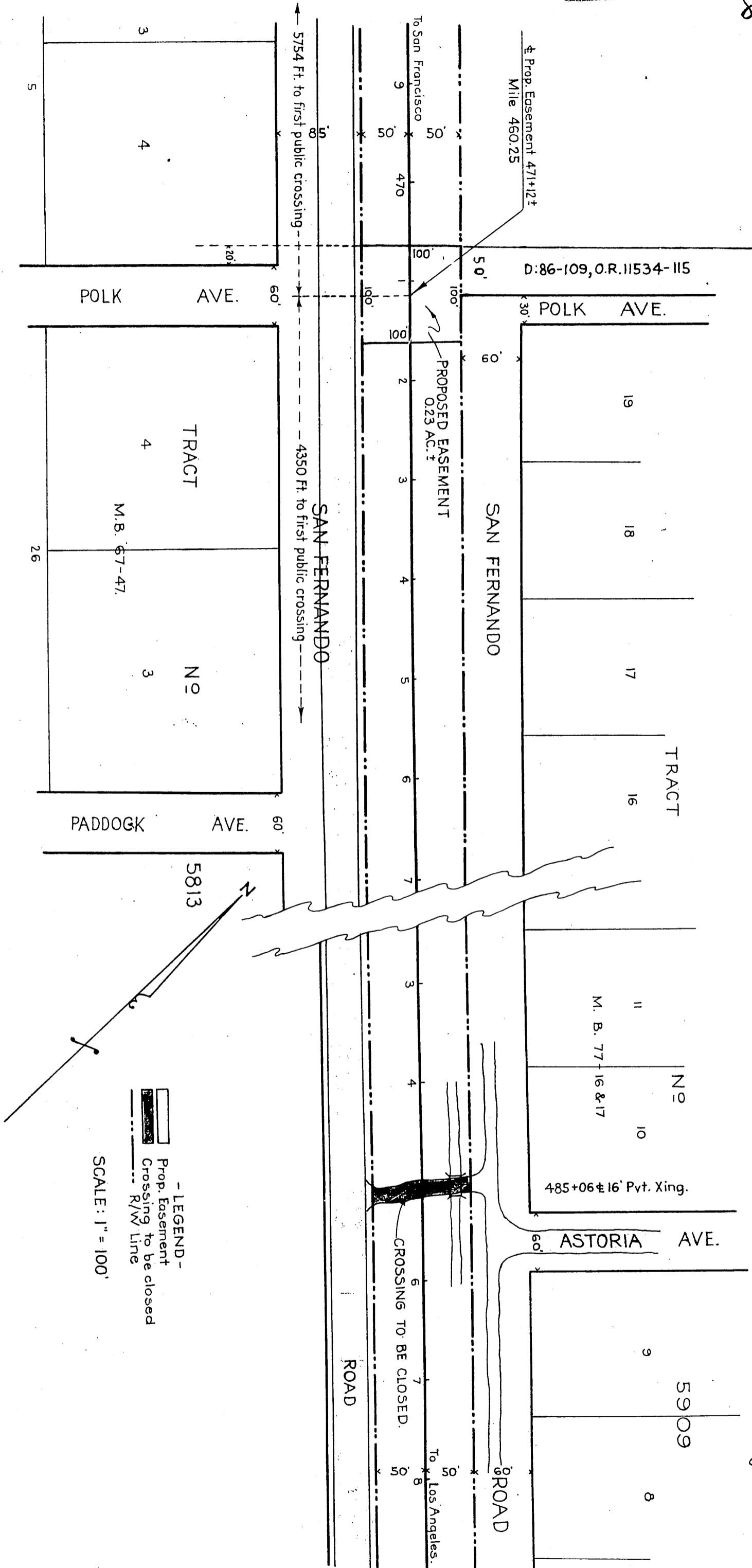


TO  
CITY OF LOS ANGELES

ORM 12001-246

84



Polk Avenue chg. to Blk St. - Ord. 75836, Sec. 24.  
 Paddock Ave. " " Paddock St. " " Sec. 26.  
 Astoria Ave. " " Astoria St. " " Sec. 28.

- LEGEND -  
 Prop. Easement  
 Crossing to be closed  
 R/W Line

SCALE: 1" = 100'

E.P.  
COMP. I.C.

D: 90-36.  
Index 53

RECORDED - MAR. 10, 1933.

O. R. 12001