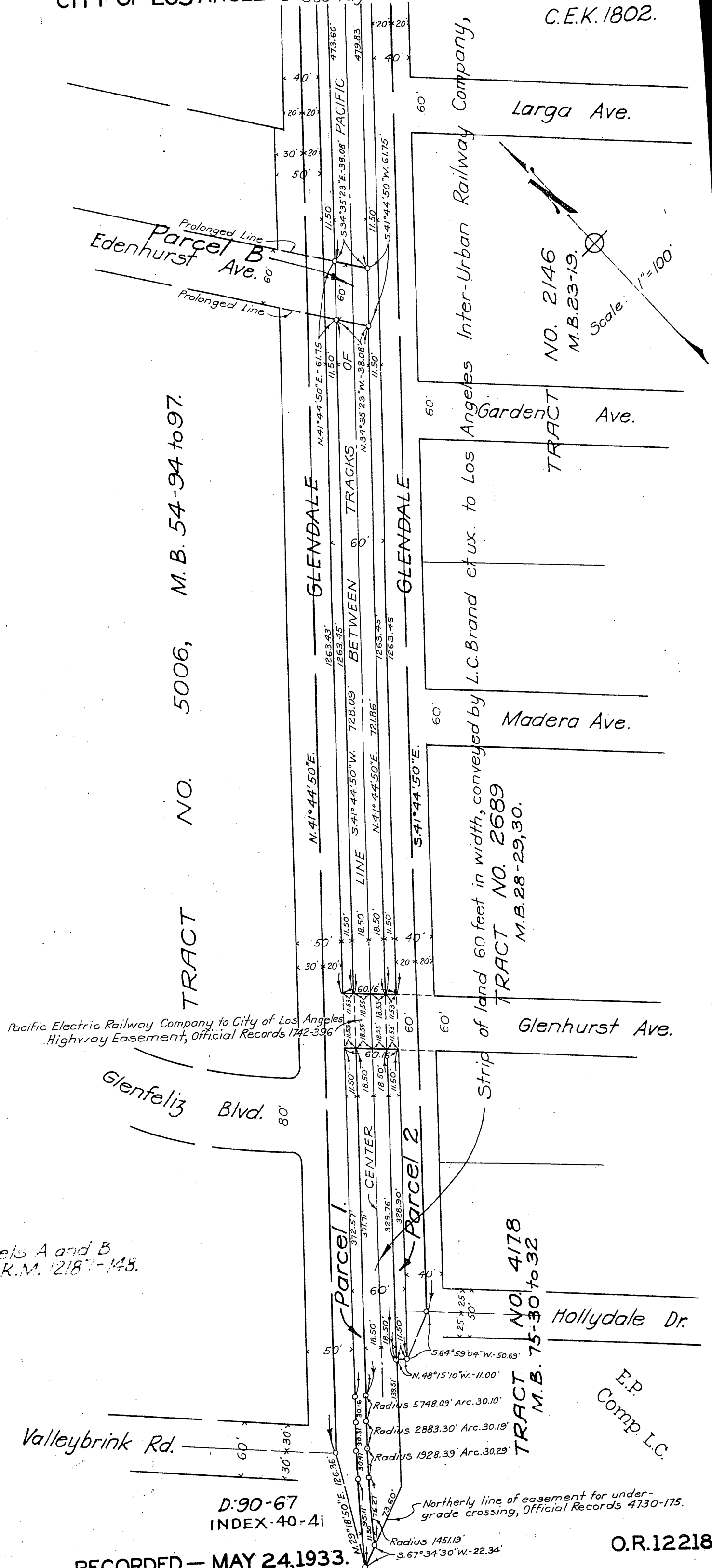


TO CITY OF LOS ANGELES See Page No. 82.



TRACT NO. 5006, M. B. 54-94 to 97.

TRACT NO. 2146 M. B. 23-19.

TRACT NO. 2689 M. B. 28-29, 30.

TRACT NO. 4178 M. B. 75-30 to 32

Note: For Parcels A and B see O.R.M. 12187-148.

Pacific Electric Railway Company to City of Los Angeles Highway Easement, Official Records 1742-396

Northerly line of easement for under-grade crossing, Official Records 4730-175.

D:90-67 INDEX 40-41

RECORDED - MAY 24, 1933.

O.R. 12218