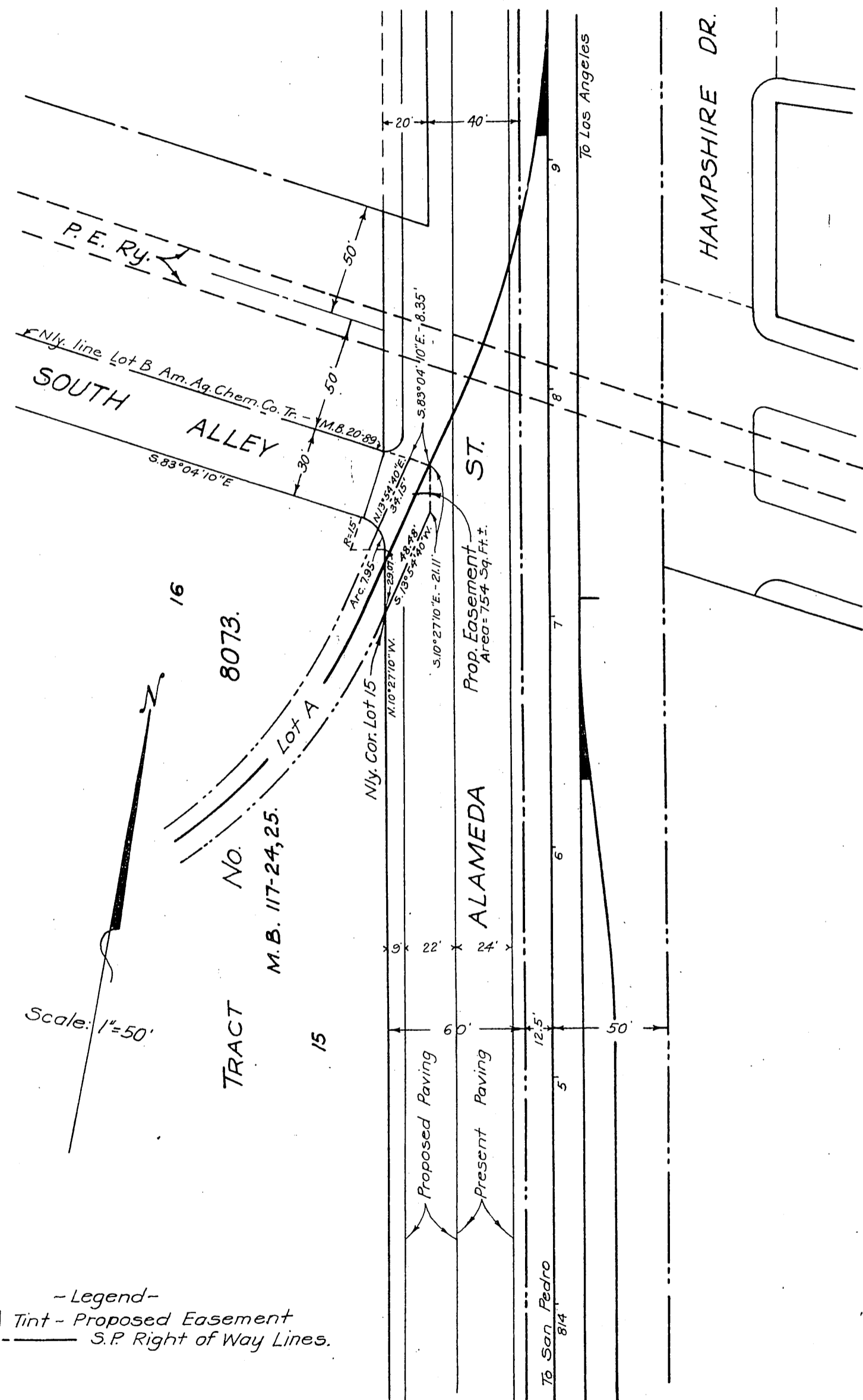


SOUTHERN PACIFIC RAILROAD COMPANY *ORM 12248-25 25*
 TO
 COUNTY OF LOS ANGELES

8



Scale: 1" = 50'

- Legend -
 Tint - Proposed Easement
 S.P. Right of Way Lines.

South Alley changed to Randolph St. ~ D:49-277,

E.P.
 Comp. Houston

INDEX 67
 D:91-223

RECORDED - MAY 26, 1933.

O.R.12248