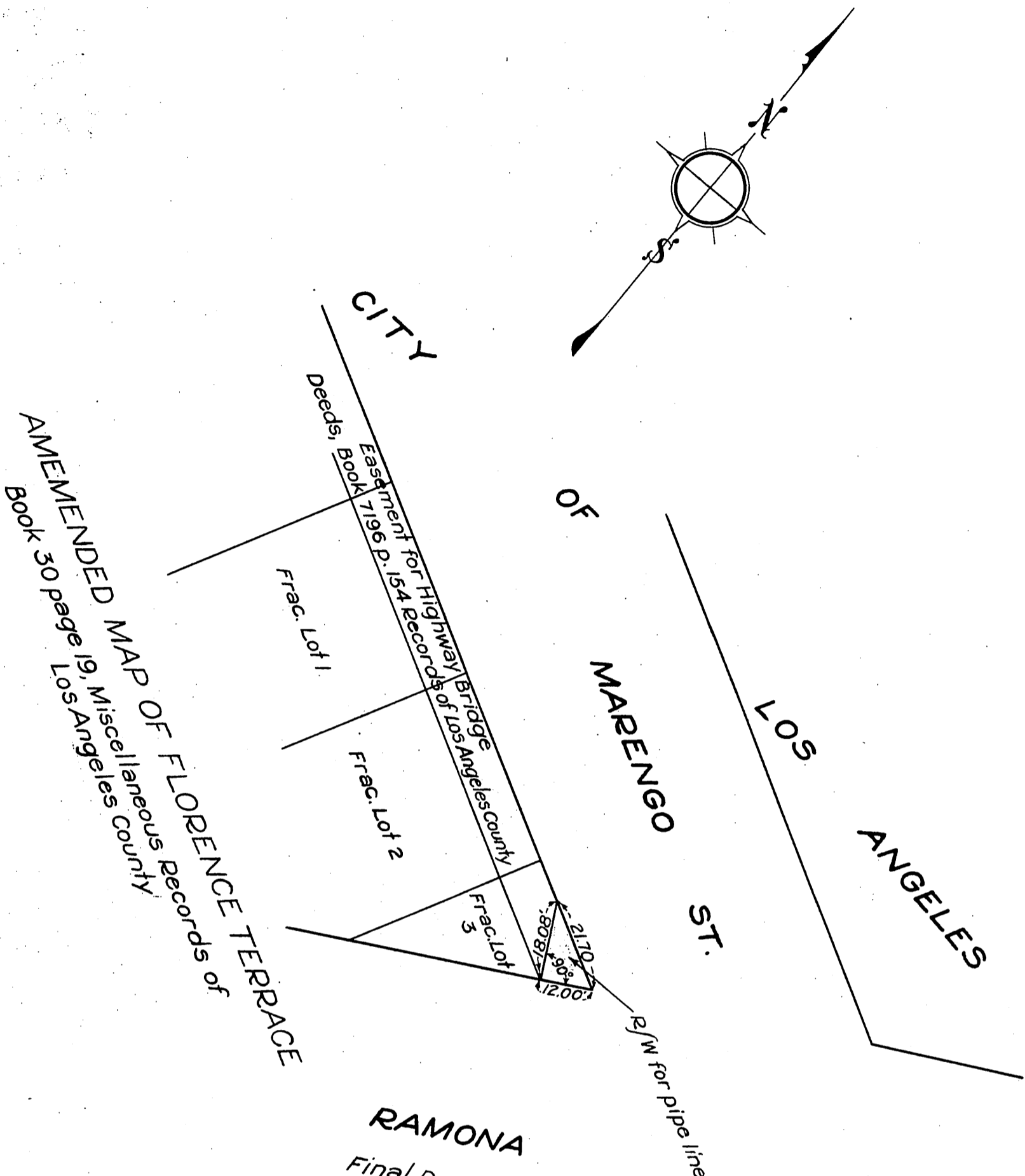


PACIFIC ELECTRIC RAILWAY COMPANY
TO
CITY OF LOS ANGELES

ORM 12584-323

323

33



RAMONA
Final Decree recorded in Book 11965 page 31
of Official Records of Los Angeles County.

BLVD.

C.E.K. 1881

Comp. I.C.

Scale: - 1" = 30'
D: 98-14:
Index 7

RECORDED - MAR. 16. 1934.

O. R. 12584